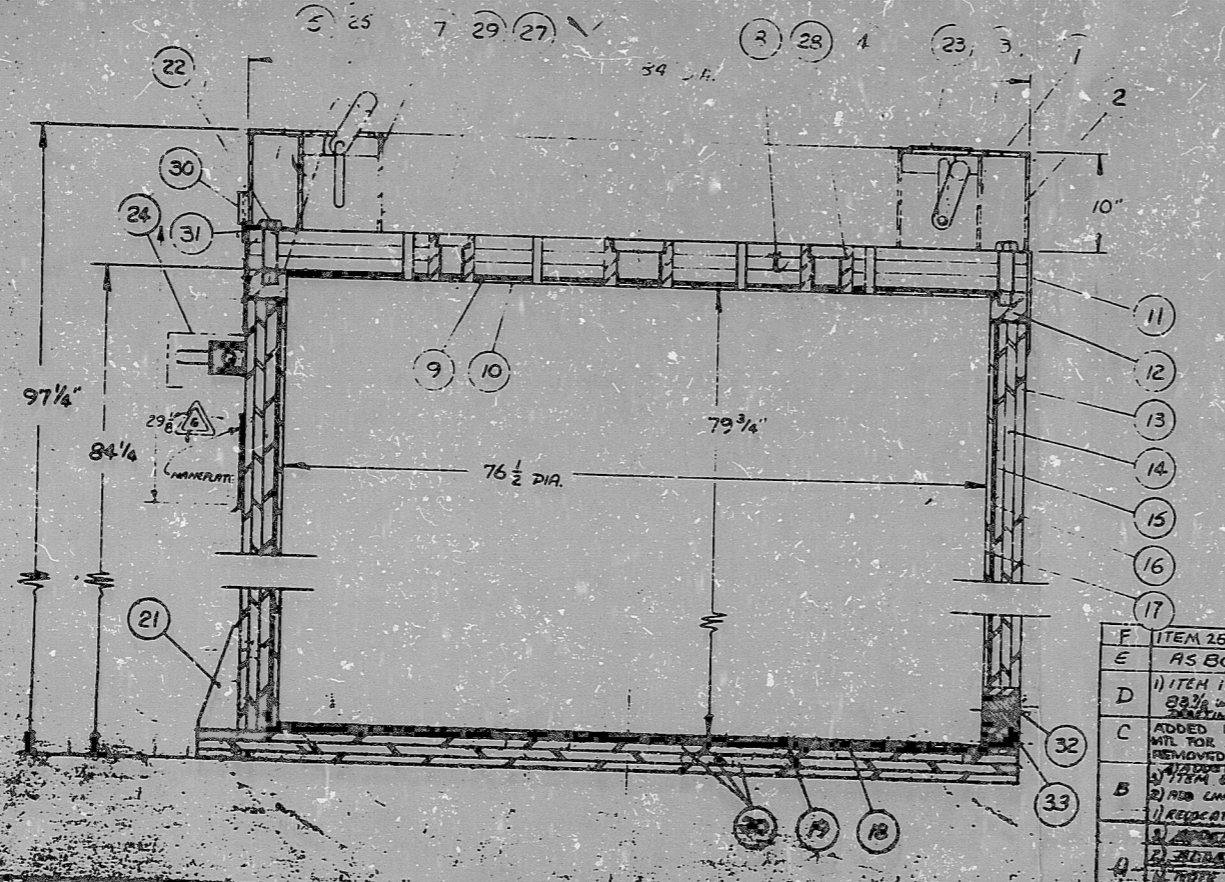


ITEM	DESCRIPTION	QUAN
1	TOP R. 83 1/2" O.D. x 52 1/2" I.D. x 1/4" THK.	1
2	OUTER RING 83 1/2" O.D. x 9 1/4" LG. x 1/4" THK.	1
3	CENTER RING 71 1/2" O.D. x 9 1/4" LG. x 1/4" THK.	1
4	INNER RING 52 1/2" O.D. x 9 1/4" LG. x 1/4" THK.	1
5	OUTER STRUTS 6 1/2" x 9 1/4" x 1/4" THK.	36
6	INNER STRUTS 9 1/2" x 9 1/4" x 1/4" THK.	36
7	LIFT BAFFLE BEARING PLATE	4
8	PLATE 84" O.D. x 1" THK.	3
9	PLATE "ASBESTOS" 76" O.D. x 1/2" THK.	1
10	PLATE 76 1/2" O.D. x 1/2" THK.	1
11	RING 84 1/2" O.D. x 10 LG. x 1/4" THK.	1
12	RING 84" O.D. x 76 1/2" I.D. x 5" THK.	1
13	RING 84" O.D. x 78 1/2" LG. x 1" THK.	1
14	RING 82" O.D. x 78 1/2" LG. x 1" THK.	1
15	RING 80" O.D. x 78 1/2" LG. x 1" THK.	1
16	RING "ASBESTOS" 78" O.D. x 78 1/2" LG. x 1/4" THK.	1
17	RING 77 1/2" O.D. x 77 1/2" LG. x 1/2" THK.	1
18	PLATE 77 1/2" O.D. x 1/2" THK.	1
19	PLATE "ASBESTOS" 78" O.D. x 1/2" THK.	1
20	PLATE 93" O.D. x 1" THK.	3
21	GUSSET 12 x 4 1/2" x 3/4" THK.	12
22	BOLTS 1 1/2" - 6 x 2 1/4" LG. # 320 L7	36
23	SHACKLE COVER 8" x 7" x 1/2" THK.	4
24	SHACKLE COVER, CASK LIFT (0502-B-0029)	4
25	O-RING (SILICONE) 76 1/2" NOM I.D. x 1/4" THK.	1
26	SECURITY WIRE WITH LEAD SEAL	2
27	GASKET 5 1/2" I.D. x 3 1/2" O.D. x 1/4" THK. "ANCHOR" BRAND	1
28	GASKET 3 1/2" I.D. x 4 1/2" O.D. x 1/4" THK. "ANCHOR" BRAND	2
29	GASKET 2 1/2" I.D. x 3 1/2" O.D. x 1/4" THK. "ANCHOR" BRAND	2
30	ALIGNMENT BLOCK 3 1/2" x 2 1/2" x 1/2"	8
31	ALIGNMENT PLATE 1" x 10" x 1/2" THK.	2

33 GASKET 3 1/2" I.D. x 3 1/2" O.D. x 1/4" THK. "ANCHOR" BRAND
 32 LINER DRAIN ACCESS PLUG (SEE DWG 0502-B-0026)

NOTE:

- 1) BOLTS USE ASTM A-320 L5
- 2) ALL WELDS TO BE DONE IN ACCORDANCE WITH THE WELDING PROCEDURE SPECIFICATION (WPS) AND QUALITY ASSURANCE PLAN (QAP) FOR THE PROJECT. WELDS TO BE MADE BY WELDER J. J. SMITH, AS PER DWG 0502-B-0026.
- 3) PRIOR TO PAINT APPLICATION, REMOVE ALL GREASE, OIL, SALT, AND OTHER CONTAMINANTS BY ABRASIVE BLAST CLEANING WITH SSPC-SP1 (SOLVENT CLEANING) SURFACE SHALL BE DRY ABRASIVE BLAST CLEANED IN ACCORDANCE WITH SSPC (COMMERCIAL WASH CLEANING) USING ABRASIVE OF SUCH PARTICLE SIZE TO GIVE AN ANCHOR PROFILE OF 1.5 MILS. PRIOR TO PAINT APPLICATION, RESIDUE SHALL BE REMOVED BY AIR BLASTING ON VACUUM. RESIDUE SHALL BE APPLIED WITHIN 6 HOURS AFTER BLAST CLEANING OR BEFORE SIMILAR STOPPING OCCURS.
- 4) PAINT: INTERNAL & EXTERNAL SURFACES PER PHENOLINE #303 SPECIFICATION (A) ONE COAT PHENOLINE #303 PRIMER (YELLOW) 4 MILS DRY (B) TWO COAT PHENOLINE #303 FINISH (#720 GRAY) 4 MILS DRY (C) TOTAL MINIMUM COATING 8 MILS DRY
- 5) TELETYPE UNLESS OTHERWISE SPECIFIED
- 6) USE "KEY" PASTE AS THD. SEALER FOR ALL COVER PORT PLUGS & FOR DRAIN PLUG, OR ATCOR EQUIV.
- 7) FOR DETAILS SEE DWGS 0502-B-0022, 0502-B-0023, 0502-B-0025



REV	DESCRIPTION	DATE	BY	CHKD
F	ITEM 26 1/2" W O-RING WAS 3/4"	8-29-76	mmc	
E	AS BUILT REVISION	8-23-76		
D	1) ITEM 1 83 1/2" WAS 84" ITEM 2 83 1/2" WAS 84" ADDED NOTE C.	12-07-76		
C	ADDED NOTE C CHANGED TO STD W/1 FOR SHACKLED PLUGS & STAYS COVER REMOVED W/1 CHANGING TO NOTE 1.	11-28-76		
B	1) ITEM 25, QUANT 1 WAS 1			
A	1) ADD LINER DRAIN ACCESS PLUG (ITEM 32)			
	2) RELOCATED COVER PLUGS (ITEM 23)			
	3) ADDED TO COVER			
	4) ADDED ITEM 26			
	5) NOTE 2 ALL WELDS			

TENNESSEE VALLEY AUTHORITY

TITLE: EDWARDS FERRY LOW LEVEL CONTAINER

65-33-180

0502-B-0024

9209160231
 APERTURE CARD

PDR RIDS

9209160231

