

- NOTES:**
1. ALL COMPONENT PART NUMBERS PREFIXED 46 UNLESS OTHERWISE NOTED.
 2. ALL MANUAL VALVES PREFIXED 60M UNLESS OTHERWISE NOTED.
 3. REACTOR EMERGENCY COMPONENT COOLING INCLUDES CONNECTIONS FOR THE FOLLOWING:
 - REACTOR COOLING SYSTEM (RCS) PUMP & MOTOR COOLERS
 - EQUIPMENT DRAIN PUMP COOLERS
 - CONDENSATE PUMP COOLERS
 - CONDENSATE PUMP COOLERS
 - CONDENSATE PUMP COOLERS
 4. ALL JST CONNECTIONS (J) ARE PIPING CLASS 1C-N6 BEGINNING AT THE DOWNSTREAM SIDE OF THE REDUCER TO THE 3/8" FLAT CONNECTION.

- REFERENCES:**
1. FLOW DIAGRAM SYSTEMS, FH-14A.
 2. FLOW DIAGRAM SERVICE WATER SYSTEM AC, FH-14A.
 3. FLOW DIAGRAM REACTOR BLDG. COOLING WATER FH-15A.
 4. FLOW DIAGRAM REACTOR BLDG. SERVICE WATER COOLING FH-16A.
 5. FLOW DIAGRAM REACTOR BLDG. SERVICE WATER COOLING FH-17A.
 6. FLOW DIAGRAM CONTROL ROOM AREA SERVICE & CHILLED WATER FH-35A.

CPD-40A FH-15A
CPD-21 FH-45B

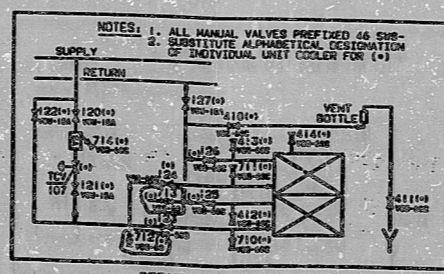
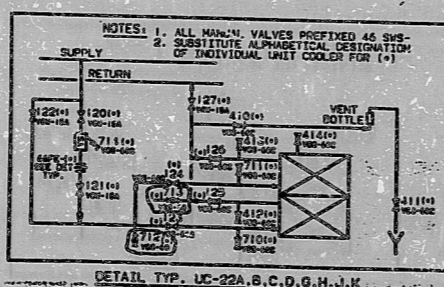
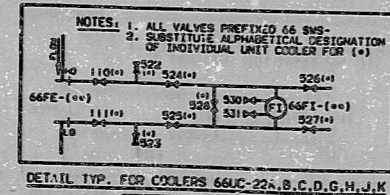
UNCONTROLLED DRAWING
 Copy Date: 5/11/92 STX
 Caution-Extended use of this drawing copy may result in its inaccuracy due to subsequent design changes and drawing updates.

- █ 1ST COMPONENT
- █ CLASS 1
- █ CLASS 2
- █ CLASS 3

THE ORIGINAL TRACING FOR THIS DRAWING WAS PREPARED BY: STINE & WEBSTER CORP.

A PORTION OF THE ORIGINAL DOCUMENT WITH ORIGINAL INITIALS AND SIGNATURES AND THE ORIGINAL SEAL, HAS BEEN REPRODUCED IN THE FOLD OF THIS DRAWING TO INDICATE THE ORIGINAL DATE AND SIGNATURE.

THIS DOCUMENT WAS ELECTRONICALLY STORED AT SYSTEM 7.



9206150402

NO.	DESCRIPTION	DATE	BY
10	AS-BUILT FOR 66UC-22A		
11	AS-BUILT FOR 66UC-22B		
12	AS-BUILT FOR 66UC-22C		
13	AS-BUILT FOR 66UC-22D		
14	AS-BUILT FOR 66UC-22E		
15	AS-BUILT FOR 66UC-22F		
16	AS-BUILT FOR 66UC-22G		
17	AS-BUILT FOR 66UC-22H		
18	AS-BUILT FOR 66UC-22I		
19	AS-BUILT FOR 66UC-22J		

QA CAT. I

NUCLEAR SAFETY RELATED

DESIGNED BY: JAMES A. FITZPATRICK
 NUCLEAR POWER PLANT

FLOW DIAGRAM
 EMERGENCY SERVICE WATER
 SYSTEM 46 & 15

DATE: _____

New York Power Authority

SCALE: NONE

DWG NO: 11325-FH-45B
 SHEET 1 OF 1

REV: 19

REF: CPD-21

PDR RIDS

9206150402

