

DRAWING NUMBER
FM-49A

DRAWING NUMBER

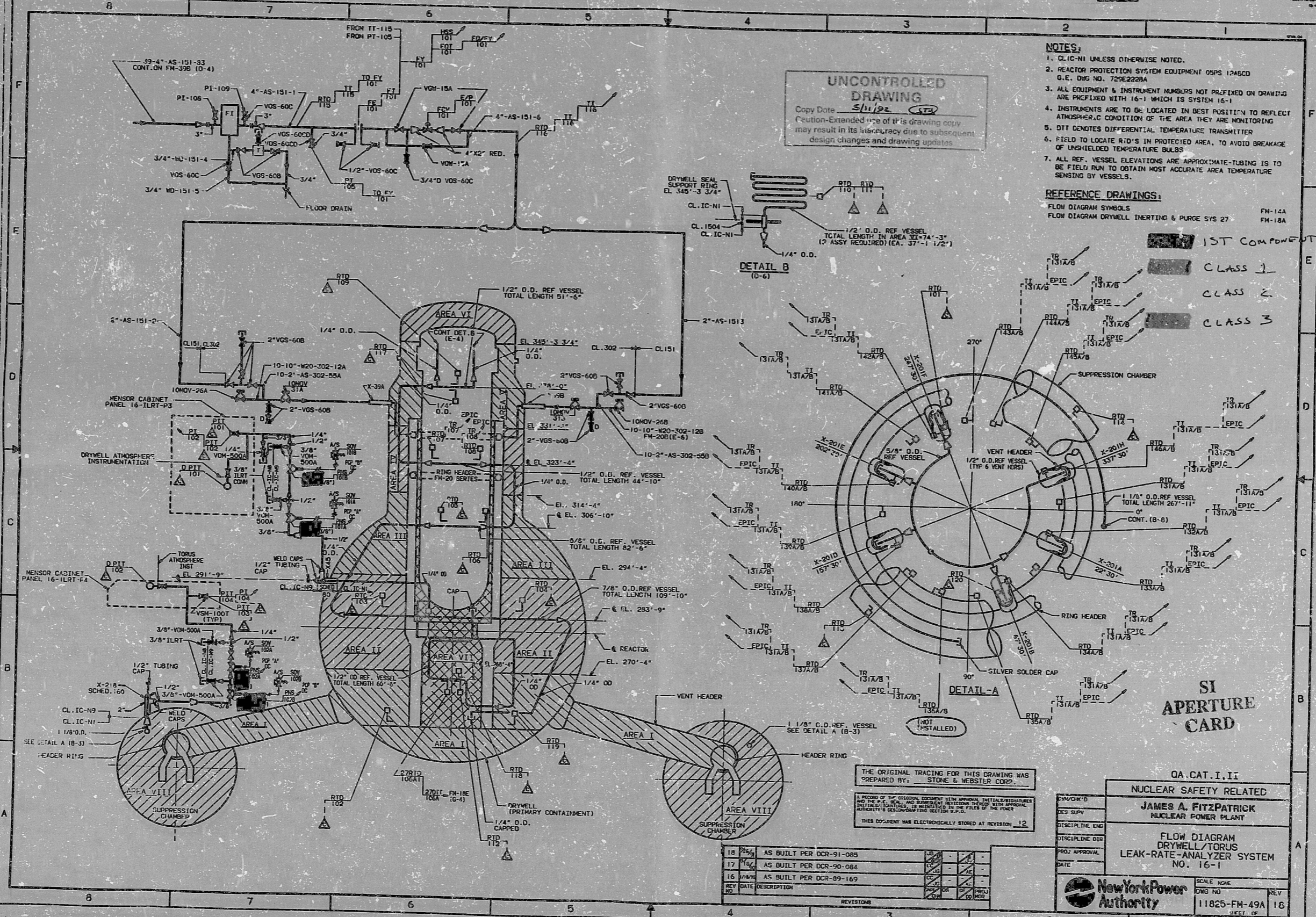
DRAWING NUMBER

DRAWING NUMBER
FM-49A

DRAWING NUMBER

DRAWING NUMBER
FM-49A

REV-18



UNCONTROLLED DRAWING
Copy Date 5/11/92 STP
Caution-Extended use of this drawing copy may result in its inaccuracy due to subsequent design changes and drawing updates.

- NOTES:**
1. CLIC-NI UNLESS OTHERWISE NOTED.
 2. REACTOR PROTECTION SYSTEM EQUIPMENT 09PS 1246CD G.E. DNG NO. 709E2229A
 3. ALL EQUIPMENT & INSTRUMENT NUMBERS NOT PREFIXED ON DRAWING ARE PREFIXED WITH 16-1 WHICH IS SYSTEM 16-1
 4. INSTRUMENTS ARE TO BE LOCATED IN BEST POSITION TO REFLECT ATMOSPHERIC CONDITION OF THE AREA THEY ARE MONITORING
 5. DTT DENOTES DIFFERENTIAL TEMPERATURE TRANSMITTER
 6. FIELD TO LOCATE RTD'S IN PROTECTED AREA, TO AVOID BREAKAGE OF UNSHIELDED TEMPERATURE BULBS
 7. ALL REF. VESSEL ELEVATIONS ARE APPROXIMATE-TUBING IS TO BE FIELD RUN TO OBTAIN MOST ACCURATE AREA TEMPERATURE SENSING BY VESSELS.

REFERENCE DRAWINGS:
FLOW DIAGRAM SYMBOLS FM-14A
FLOW DIAGRAM DRYWELL INERTING & PURGE SYS 27 FM-18A

- 1ST COMPONENT**
- CLASS 1
 - CLASS 2
 - CLASS 3

THE ORIGINAL TRACING FOR THIS DRAWING WAS PREPARED BY: STONE & WEBSTER CORP.

A PORTION OF THE ORIGINAL DOCUMENT WITH APPROVAL, DETAILS, REVISIONS, ETC. IS FILED IN THE RECORDS AND DOCUMENTS DIVISION OF THE NEW YORK POWER AUTHORITY'S GEOGRAPHIC SECTION 8.1.2.5.

THIS DOCUMENT HAS ELECTRONICALLY STORED AT REVISION 12

REV	DATE	DESCRIPTION	BY	CHKD	APP'D
18	1/6/92	AS BUILT PER DCR-91-085			
17	1/6/92	AS BUILT PER DCR-90-084			
16	1/14/92	AS BUILT PER DCR-89-169			

QA CAT. I, II
NUCLEAR SAFETY RELATED

JAMES A. FITZPATRICK
NUCLEAR POWER PLANT

FLOW DIAGRAM
DRYWELL/TORUS
LEAK-RATE-ANALYZER SYSTEM
NO. 16-1

SCALE NONE
DNG NO. 11825-FM-49A
REV 18

New York Power Authority

9206150362

PDR RIDS

9206150362

