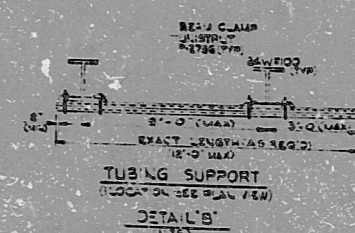
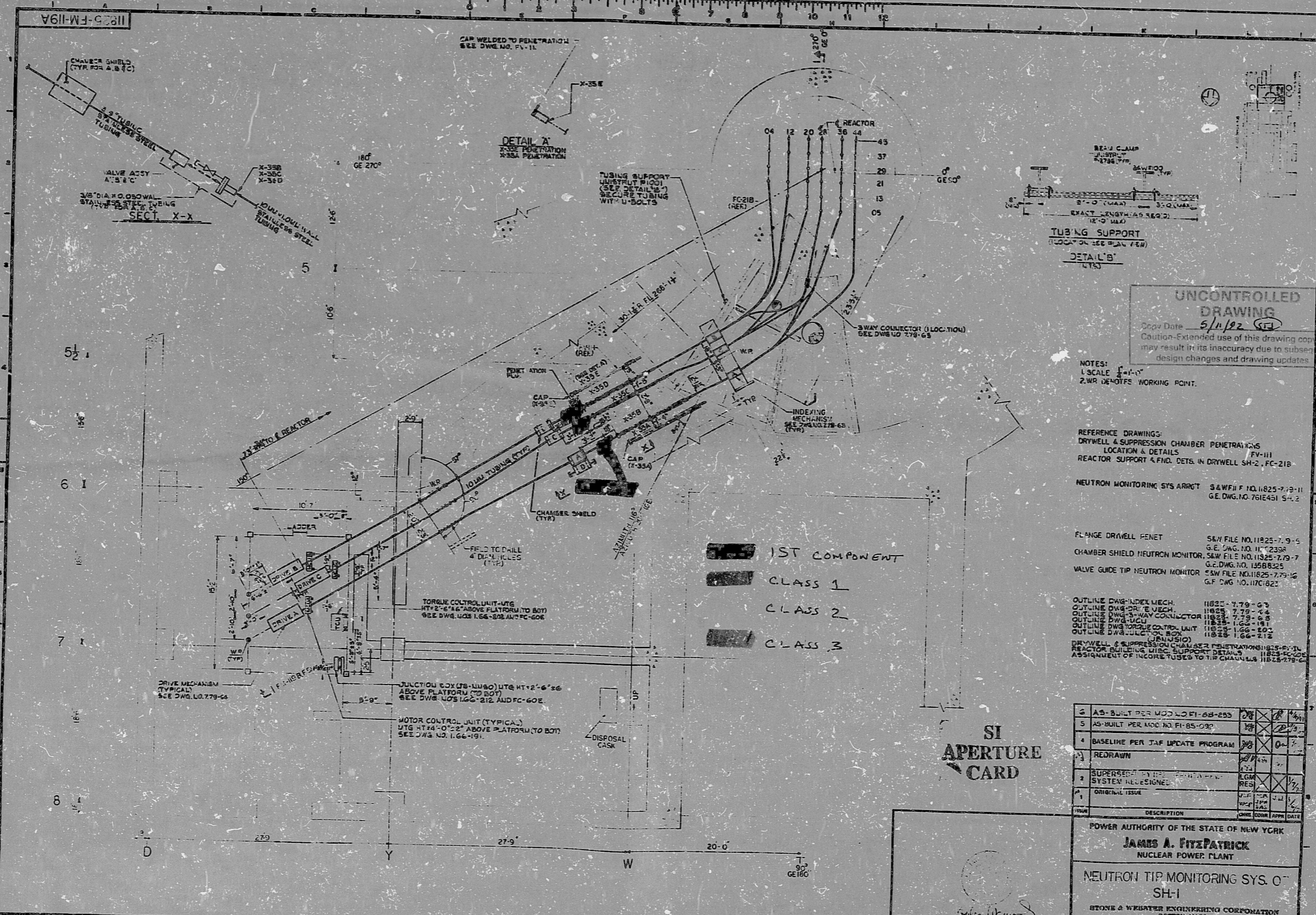


FM-119A

FM-119A



**UNCONTROLLED DRAWING**  
 Copy Date 5/11/82  
 Caution-Extended use of this drawing copy may result in its inaccuracy due to subsequent design changes and drawing updates.

- NOTES:**  
 1. SCALE 1/4" = 1'-0"  
 2. WR DENOTES WORKING POINT.
- REFERENCE DRAWINGS:**  
 DRYWELL & SUPPRESSION CHAMBER PENETRATIONS LOCATION & DETAILS FY-III  
 REACTOR SUPPORT & FWD. DETL. IN DRYWELL SH-2, FC-21B
- NEUTRON MONITORING SYS. ARRCT** 9&WF# 10.11825-7.79-11  
 G.E. DWG. NO. 761E451 S-4.2
- FLANGE DRYWELL PENET** S&W FILE NO. 11825-7.79-5  
 G.E. DWG. NO. H-2358
- CHAMBER SHIELD NEUTRON MONITOR** S&W FILE NO. 11825-7.79-7  
 G.E. DWG. NO. 1258825
- VALVE GUIDE TIP NEUTRON MONITOR** S&W FILE NO. 11825-7.79-16  
 G.E. DWG. NO. 117C622
- OUTLINE DWG. INDEX MECH.** 11825-7.79-67  
**OUTLINE DWG. DR. E. VESCH** 11825-7.79-64  
**OUTLINE DWG. 3-WAY CONNECTOR** 11825-7.79-68  
**OUTLINE DWG. UCU** 11825-1.62-181  
**OUTLINE DWG. TORQUE CONTROL UNIT** 11825-1.62-191  
**OUTLINE DWG. JUNCTION BOX** 11825-1.62-212
- DRYWELL & SUPPRESSION CHAMBER PENETRATIONS** 11825-7.79-11  
**REACTOR SUPPORT & FWD. DETL. IN DRYWELL SH-2, FC-21B** 11825-7.79-11  
**ASSIGNMENT OF INCORE TUBES TO THE CHAMBERS** 11825-7.79-11

- 1ST COMPONENT
- CLASS 1
- CLASS 2
- CLASS 3

**SI APERTURE CARD**

AS-BUILT PER MOD. NO. FI-68-253	0%	0%	0%
AS-BUILT PER MOD. NO. FI-65-030	0%	0%	0%
BASILINE PER JAF UPDATE PROGRAM	0%	0%	0%
REDRAWN	0%	0%	0%
SUPERSEDED BY SYSTEM REDESIGN	0%	0%	0%
ORIGINAL ISSUE	0%	0%	0%
DESCRIPTION	DATE	BY	APP. DATE

POWER AUTHORITY OF THE STATE OF NEW YORK  
**JAMES A. FITZPATRICK**  
 NUCLEAR POWER PLANT

NEUTRON TIP MONITORING SYS. O  
 SH-1

STONE & WEBSTER ENGINEERING CORPORATION  
 BOSTON, MASS.

APPROVED: [Signature]  
 REGISTERED PROFESSIONAL ENGINEER  
 STATE OF MASS.

DRAWING NUMBER **11825-FM-119A** REV 6

9206150297

PDR RIDS

9206150297

