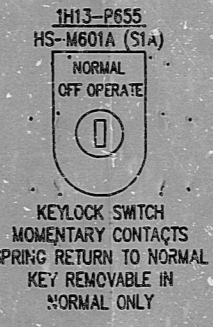


TABLE 1

LOGIC	DRAWING NO.	VALVES	CONTACT
A	J-1249-04,05,06	F001A,2A,3A	K25A
E	J-1249-04,05,06	F001E,2E,3E	K25E
J	J-1249-04,05,06	F001J,2J,3J	K25J
N	J-1249-04,05,06	F001N,2N,3N	K25N

CONTACT TABULATION

LOGIC "A"			LOGIC "E"			LOGIC "J"			LOGIC "N"		
DESCRIPTION	CONTACT	SCHEMATIC	DESCRIPTION	CONTACT	SCHEMATIC	DESCRIPTION	CONTACT	SCHEMATIC	DESCRIPTION	CONTACT	SCHEMATIC
MSIV F022A	1B21-ZS-N101A6	E-1210-18	MSIV F022B	1B21-ZS-N101B6	E-1210-18	MSIV F022C	1B21-ZS-N101C6	E-1210-19	MSIV F022D	1B21-ZS-N101D6	E-1210-19
		J-1281-010(A)			J-1281-010(A)			J-1281-010(A)			J-1281-010(A)
PIS-N650	K6	E-1210-18	PIS-N650	K6	E-1210-18	PIS-N650	K6	E-1210-19	PIS-N650	K6	E-1210-19
		J-1249-L-001(R)			J-1249-L-001(T)			J-1249-L-001(W)			J-1249-L-001(Z)
HS-M601A	S1A	E-1210-18	HS-M601E	S1E	E-1210-18	HS-M601J	S1J	E-1210-19	HS-M601N	S1N	E-1210-19
TDE	K49A		TDE	K49E		TDE	K49J		TDE	K49N	
PIS-N661A	K3A	E-1210-18	PIS-N661E	K3E	E-1210-18	PIS-N661J	K3J	E-1210-19	PIS-N661N	K3N	E-1210-19
		J-1249-L-003A(S)			J-1249-L-003E(S)			J-1249-L-003J(S)			J-1249-L-003N(S)
	K52A	E-1210-16,18		K52E	E-1210-16,18		K52J	E-1210-16,19		K52N	E-1210-16,19
	K27A			K27E			K27J			K27N	
	K25A			K25E			K25J			K25N	
	K24A	E-1210-05,18		K24E	E-1210-05,18		K24J	E-1210-05,19		K24N	E-1210-05,19
	K29A	E-1210-18		K29E	E-1210-18		K29J	E-1210-19		K29N	E-1210-19



- REFERENCES:
- E-1210-021
 - E-1210-018
 - E-1210-013
 - E-1210-016
 - E-1210-019
 - M-1097
 - E-1160-053

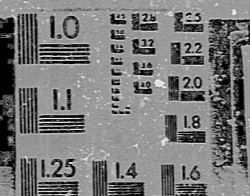
NO.	REVISIONS	DATE	BY	CHKD	APPD
1	REVISED PER ESCP AND EDP-019	12/67	WJ	OR	WJ

SYSTEM ENERGY RESOURCES INCORPORATED
 GRAND GULF NUCLEAR STATION
 NUCLEAR PLANT ENGINEERING
 LOGIC DIAGRAM
 INBOARD MSIV LEAKAGE CONTROL
 SYSTEM INITIATION
 SYSTEM E32
 SCALE: NONE
 DRAWING NO: J-1249-001
 REV: 2

I, Joe Williams, certify that this document microfilmed on 2/6/89 is an actual record of System Energy Resources, Inc., Grand Gulf Nuclear Station and was microphotographed in the normal course of business by the Nuclear Records Section.

Joe Williams
Signature, Camera Operator

Wm. E. Lee
Signature, Records Management Supervisor



16x

9203240290

SI APERTURE CARD

DNR RTDS

9203240290

