

- REFERENCES:
1. M-1097
  2. M-1077A
  3. E-1210-021
  4. E-1210-020
  5. E-1210-018

120VAC  
52-1P52117  
REF 4

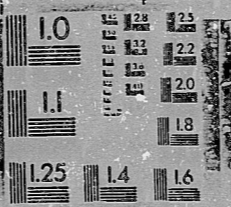
(+) (-) D1  
NOTE D

SYSTEM ENERGY RESOURCES INCORPORATED			
GRAND GULF NUCLEAR STATION			
NUCLEAR PLANT ENGINEERING			
SETPOINT CONTROL LOOP DIAGRAM			
MSIV LCS MAIN STEAM LINE "A"			
PRESSURE BELOW HIGH/LOW SETPOINT			
SYSTEM 032			
Issued For	USE	SCALE	DRAWING NO
		NONE	J-1249-L-003A
NO	REV	CHKD	APPN
			DATE
			REV 0

I, *Cherie Siller*, certify that this document microfilmed on *2/16/87* is an actual record of System Energy Resources, Inc., Grand Gulf Nuclear Station and was microphotographed in the normal course of business by the Nuclear Records Section.

*Cherie Siller*  
Signature, Camera Operator

*Wm. E. Sec*  
Signature, Records Management Supervisor



16x

9203240284

SI  
APERTURE  
CARD

\*9203240007

PDR RIDS

9203240284

