

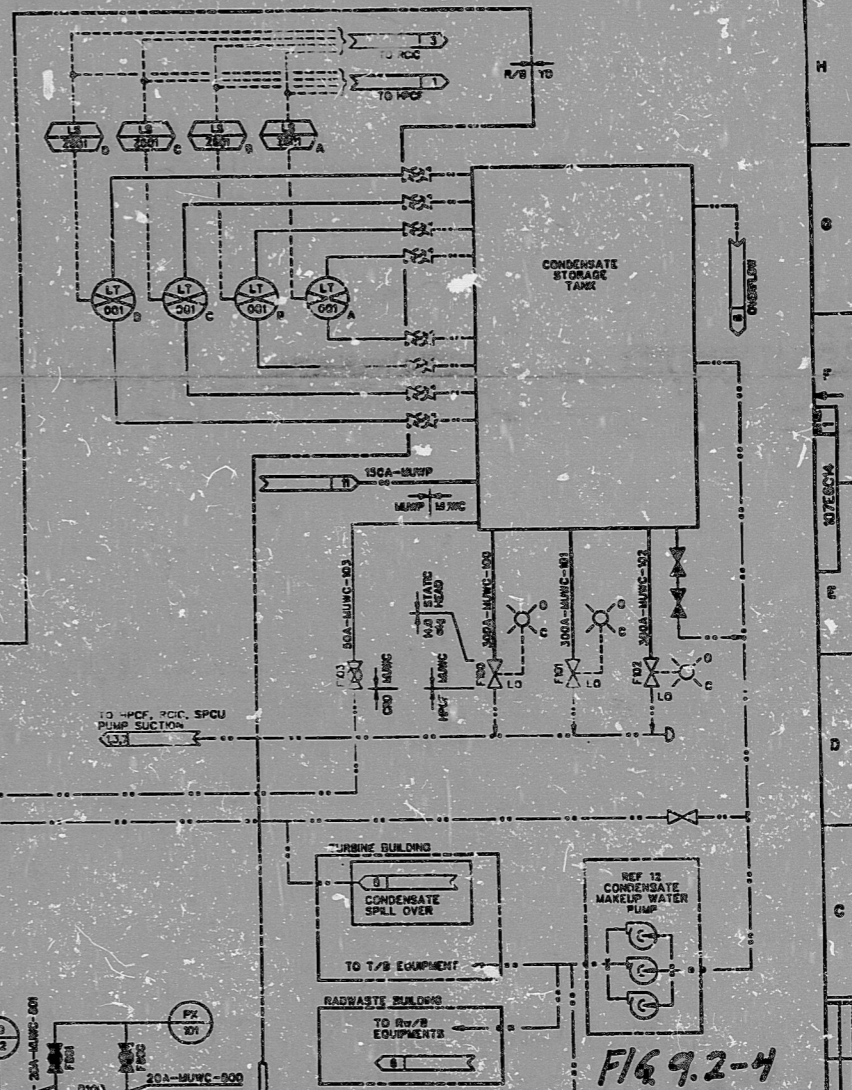
- REFERENCE DOCUMENTS:**
1. HIGH PRESSURE CORE FLASHER SYS P&ID 005-1040
  2. RESIDUAL HEAT REMOVAL SYS P&ID 071-1020
  3. REACTOR CORE ISOLATION COOLING SYS P&ID 071-1030
  4. FUEL POOL COOLING AND CLEANUP SYS P&ID 041-1030
  5. REACTOR WATER CLEANUP SYS P&ID 031-1030
  6. RADIOACTIVE DRAIN TRANSFER CASABASTE SYS P&ID 017-1030
  7. SUPPRESSION POOL CLEANUP SYSTEM P&ID 021-1030
  8. CONDENSATE FEEDWATER AND CONDENSATE AIR EXTRACTION SYS P&ID 015-1030
  9. CONTROL ROD DRIVE SYS P&ID 010-3030
  10. PIPING AND RESTRAINT SYMBOLS ON-SCALE 071-1040
  11. MAKEUP WATER SYSTEM PURIFIED WATER 017-1040
  12. MAKEUP WATER PREPARATION SYSTEM P&ID 017-1040

- NOTES:**
1. DESIGN CONDITIONS FOR PIPING ARE AS FOLLOWS UNLESS SPECIFIED OTHERWISE:
    - (A) MATERIAL AND SCHEDULE:
      - (1) ALL EXPOSED PIPE IN CONCRETE: SCH. 40
      - (2) OTHER: SCSA
      - (3) OTHER: SCSA
    - (B) RADIOACTIVE CONCENTRATION: 1000 Ci/gal
    - (C) FLUID: WATER

OTHER SPECIFICATIONS ARE LISTED IN FOLLOWING TABLE

ITEM	MAX OPERATING PRESSURE	MAX OPERATING TEMPERATURE	DESIGN CLASS	DR CLASS	SEISMIC CLASS
STEAM SYS (EXCEPT FOR FOLLOWING ITEMS)	14.0 kg/cm <sup>2</sup> g	60 °C	5	D	B
DRAIN AND VENT UPSTREAM OF VALVE	14.0 kg/cm <sup>2</sup> g	60 °C	4	D	B
DRAIN AND VENT DOWNSTREAM OF VALVE	5 kg/cm <sup>2</sup> g	60 °C	7	D	B
MPPV SUCTION LINE	STEAM HEAD	60 °C	3	B	As

2. COMPONENTS ENCLOSED WITHIN RECTANGLES ARE INCLUDED IN OTHER SYSTEMS.
3. FOLLOWING ITEMS MAY BE CHANGED IN THE DETAILED DESIGN:
  - (A) ARRANGEMENT OF COMPONENTS
  - (B) CONNECTIONS COMPARISON OF PIPING
  - (C) IDENTIFICATION NUMBERS OF PIPING AND VALVES
  - (D) CONNECTION BETWEEN MWS AND THE OTHER SYSTEMS



**FIG. 9.2-4**  
MPL NO. P13-1010

**SI APERTURE CARD**

DESIGNED BY	DATE	SCALE	1:1
CHECKED BY	DATE	SCALE	1:1
APPROVED BY	DATE	SCALE	1:1
PROJECT NO.	1078014	REV.	1
DOC. NO.	1078014	REV.	1
DATE	10/78	REV.	1
BY	J. J. J.	REV.	1
CHECKED BY	J. J. J.	REV.	1
APPROVED BY	J. J. J.	REV.	1

PDR RIDS

9202250322

