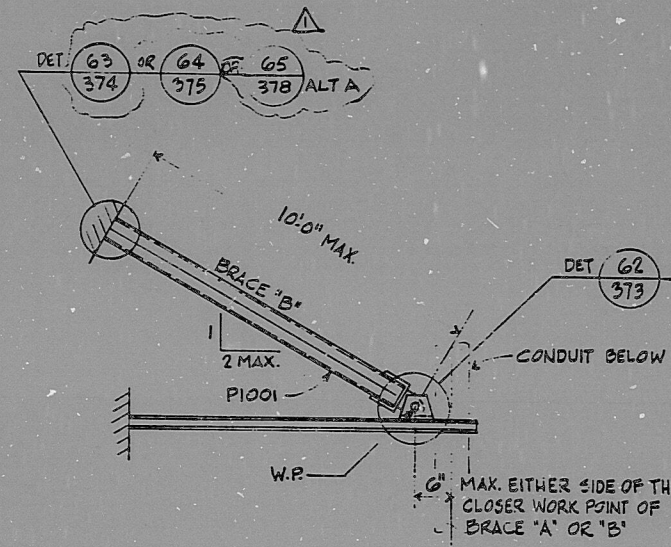


This drawing and the design it covers are the property of BECHTEL. They are hereby loaned and on the borrower's express agreement that they will not be reproduced, copied, altered, modified, or used in any way without the written consent given by the licensor to the licensee.



- NOTES : (CONTINUED FROM SH. 376)
4. SEE DETAIL 60, SH. 362 FOR TYPICAL SHIMS FOR USE ON THIS SUPPORT.
 5. ALLOWABLE LOAD IS SHOWN ON SH. 379

REVISION	DATE	BY	CHKD	GROUP	REASON	CHIEF
1	10/1/77	J.A.A.	J.A.A.	1000	ISSUED FOR CONSTR PER DDN #01	
2	10/1/77	J.A.A.	J.A.A.	1000	INCORP FCN E-5336	

SCALE	NTS	DESIGNED	H. CULBREATH	DRAWN	H. CULBREATH	JOB No.	7220	
ORIGIN		MIDLAND PLANT UNITS 1 AND 2 CONSUMERS POWER COMPANY CONDUIT AND TRAY NOTES, SYMBOLS, AND DETAILS			DRAWING No.	E-42B(Q) SH. 377	REV.	1

PROC
APERTURE
CARD

I certify that the image contained on this frame was made in the normal and regular course of business, on the date stated below and that it is an accurate reproduction of the document submitted to reprographics.

RIDS

8209130252

