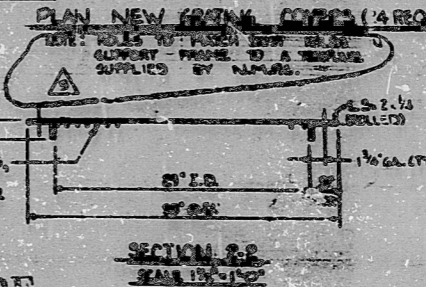
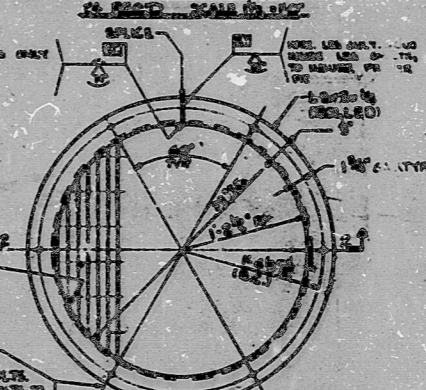
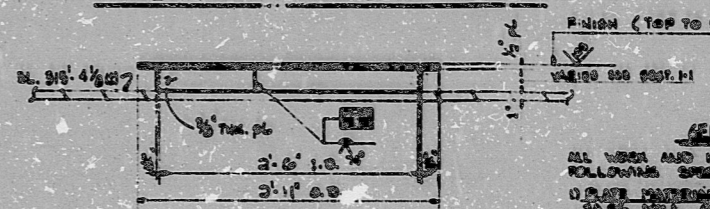
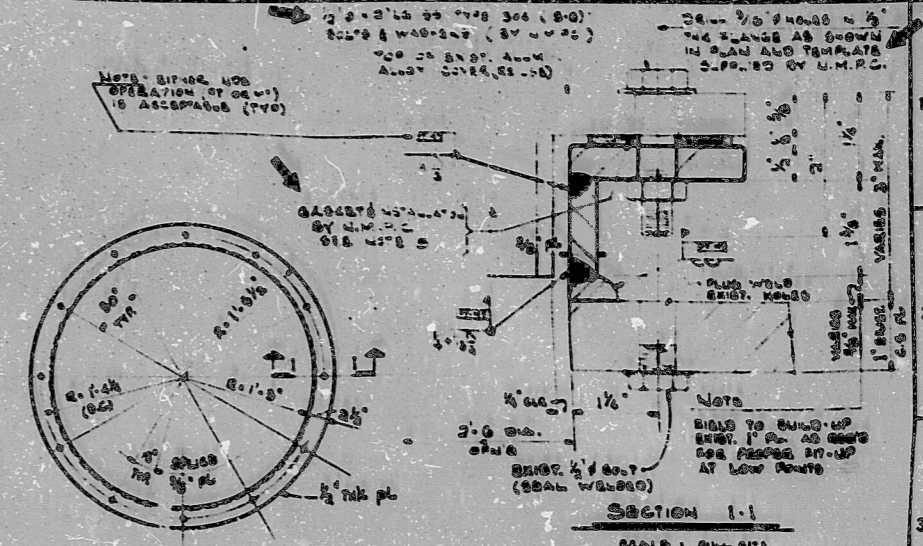
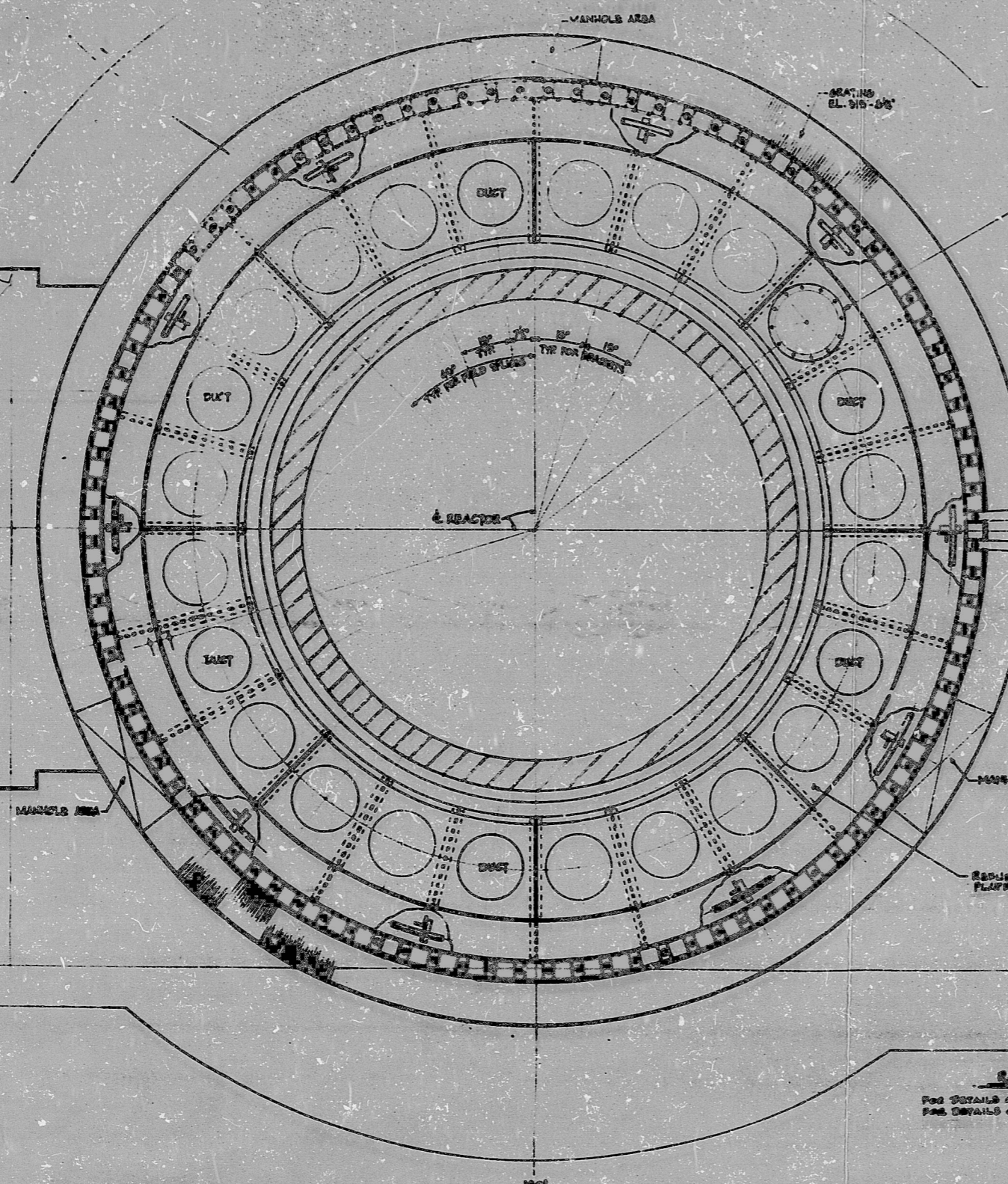


(25-104-1) 2-65 96-2

North



**GENERAL NOTES**

ALL WORK AND MATERIAL SHALL CONFORM TO THE FOLLOWING SPECIFICATIONS:

1. ALL MATERIAL SHALL BE APPROVED BY THE ENGINEER BEFORE INSTALLATION.

2. ALL WORK SHALL BE DONE IN ACCORDANCE WITH THE DRAWINGS AND SPECIFICATIONS.

3. ALL WORK SHALL BE DONE IN ACCORDANCE WITH THE LATEST EDITIONS OF THE A.S.T.M. AND A.S.T.M. SPECIFICATIONS.

4. ALL WORK SHALL BE DONE IN ACCORDANCE WITH THE LATEST EDITIONS OF THE A.S.T.M. AND A.S.T.M. SPECIFICATIONS.

5. ALL WORK SHALL BE DONE IN ACCORDANCE WITH THE LATEST EDITIONS OF THE A.S.T.M. AND A.S.T.M. SPECIFICATIONS.

6. ALL WORK SHALL BE DONE IN ACCORDANCE WITH THE LATEST EDITIONS OF THE A.S.T.M. AND A.S.T.M. SPECIFICATIONS.

7. ALL WORK SHALL BE DONE IN ACCORDANCE WITH THE LATEST EDITIONS OF THE A.S.T.M. AND A.S.T.M. SPECIFICATIONS.

8. ALL WORK SHALL BE DONE IN ACCORDANCE WITH THE LATEST EDITIONS OF THE A.S.T.M. AND A.S.T.M. SPECIFICATIONS.

9. ALL WORK SHALL BE DONE IN ACCORDANCE WITH THE LATEST EDITIONS OF THE A.S.T.M. AND A.S.T.M. SPECIFICATIONS.

10. ALL WORK SHALL BE DONE IN ACCORDANCE WITH THE LATEST EDITIONS OF THE A.S.T.M. AND A.S.T.M. SPECIFICATIONS.

NOTE: FRAME TO BE TRUE & LEVEL. WAREHOUSE FLOOR ARE COVER OR SLOTTING.

NOTE: 1/4" HOLES IN L-FRAME FOR 1/2" BOLTS (6 REOD). PER FRAME BUILT TO BE WELD-TIGHT CASE.

NOTE: 1/4" HOLES IN L-FRAME FOR 1/2" BOLTS (6 REOD). PER FRAME BUILT TO BE WELD-TIGHT CASE.

NOTE: 1/4" HOLES IN L-FRAME FOR 1/2" BOLTS (6 REOD). PER FRAME BUILT TO BE WELD-TIGHT CASE.

NOTE: 1/4" HOLES IN L-FRAME FOR 1/2" BOLTS (6 REOD). PER FRAME BUILT TO BE WELD-TIGHT CASE.

NOTE: 1/4" HOLES IN L-FRAME FOR 1/2" BOLTS (6 REOD). PER FRAME BUILT TO BE WELD-TIGHT CASE.

NOTE: 1/4" HOLES IN L-FRAME FOR 1/2" BOLTS (6 REOD). PER FRAME BUILT TO BE WELD-TIGHT CASE.

NOTE: 1/4" HOLES IN L-FRAME FOR 1/2" BOLTS (6 REOD). PER FRAME BUILT TO BE WELD-TIGHT CASE.

PLAN ABOVE EL. 915'-4" SCALE 1/4" = 1'-0"

9105280186

INFORMATION ONLY 5/1/91

FOR DETAILS OF BOLLARD WALL PLATING SEE DWG. G-10420-C-DWT.1 (2-10-86)  
FOR DETAILS OF ALUMINUM COVER SEE DWG. G-10420-C-DWT.2

5	1/4" HOLES IN L-FRAME FOR 1/2" BOLTS (6 REOD). PER FRAME BUILT TO BE WELD-TIGHT CASE.
6	1/4" HOLES IN L-FRAME FOR 1/2" BOLTS (6 REOD). PER FRAME BUILT TO BE WELD-TIGHT CASE.
7	1/4" HOLES IN L-FRAME FOR 1/2" BOLTS (6 REOD). PER FRAME BUILT TO BE WELD-TIGHT CASE.
8	1/4" HOLES IN L-FRAME FOR 1/2" BOLTS (6 REOD). PER FRAME BUILT TO BE WELD-TIGHT CASE.
9	1/4" HOLES IN L-FRAME FOR 1/2" BOLTS (6 REOD). PER FRAME BUILT TO BE WELD-TIGHT CASE.
10	1/4" HOLES IN L-FRAME FOR 1/2" BOLTS (6 REOD). PER FRAME BUILT TO BE WELD-TIGHT CASE.

NO.	DESCRIPTION	DATE
1	ISSUED FOR CONSTRUCTION	5/1/91
2	REVISION	
3	REVISION	
4	REVISION	
5	REVISION	
6	REVISION	
7	REVISION	
8	REVISION	
9	REVISION	
10	REVISION	

PDR RIDS

9105280186

