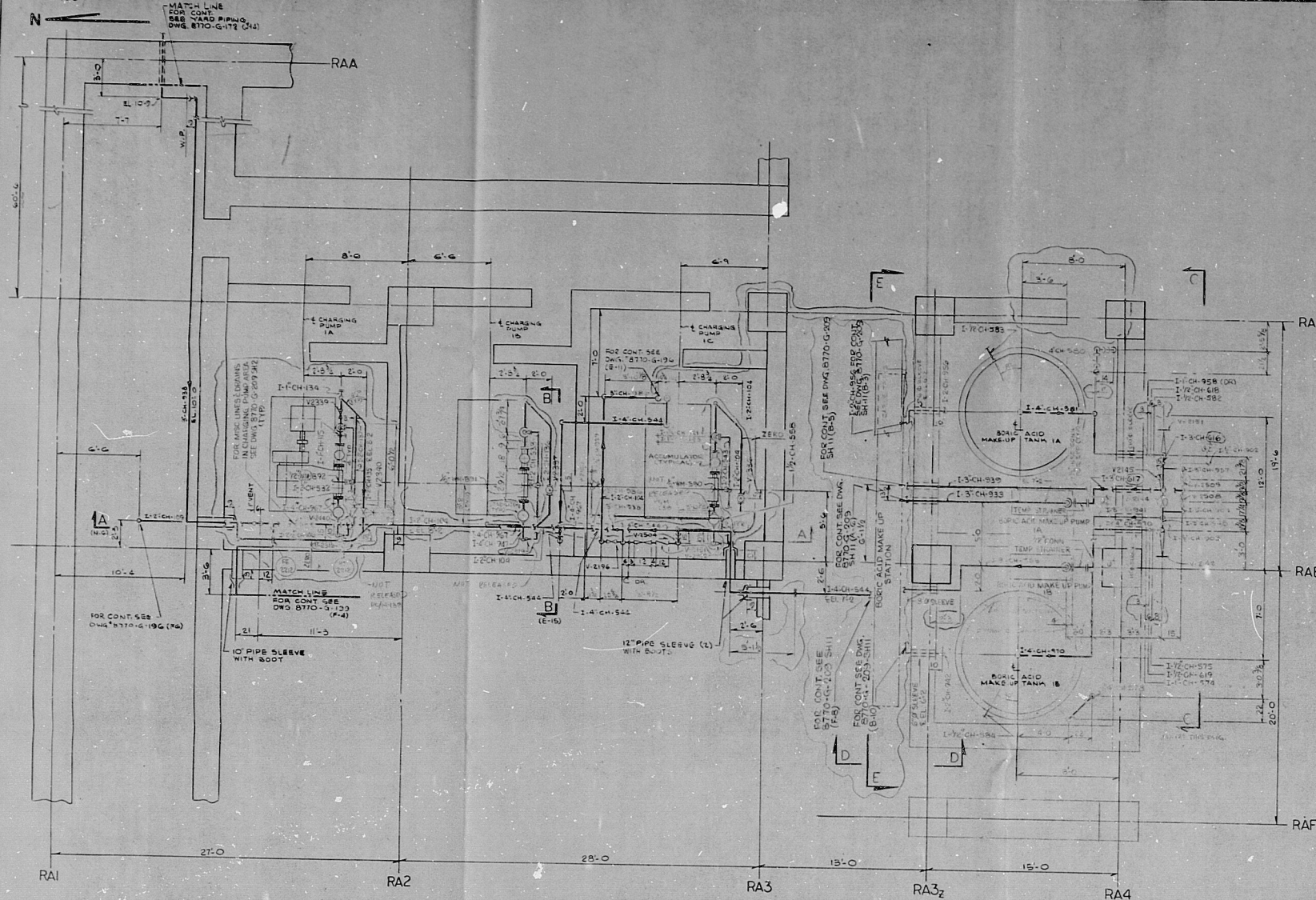
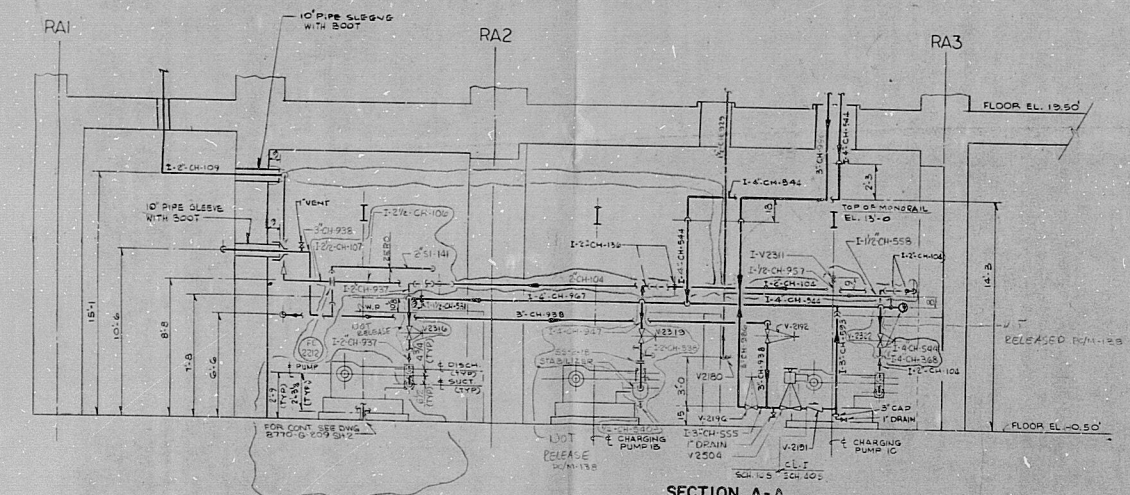


8770-G-195

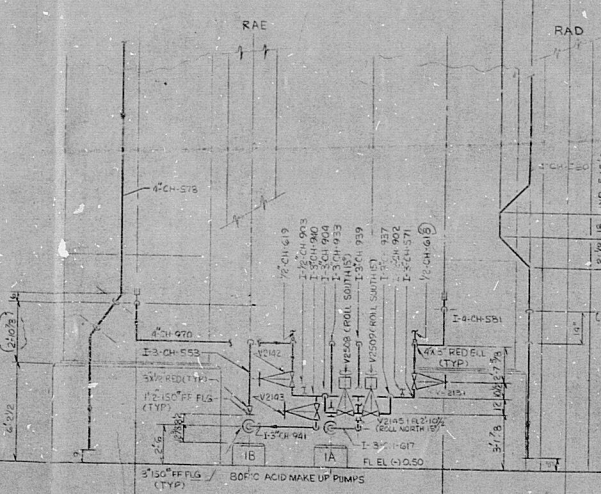


PLAN AT EL. -0.50'

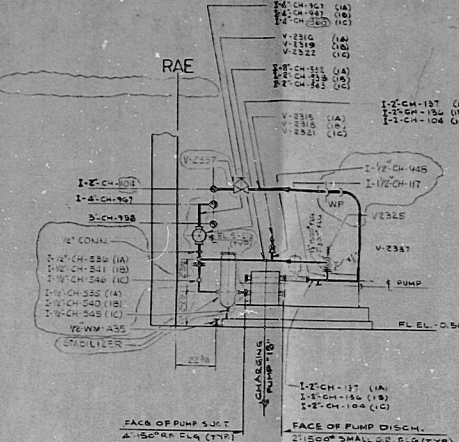
POOR ORIGINAL



SECTION A-A
(1'-10\"/>



SECTION C-C
(1'-10\"/>



SECTION B-B
(1'-10\"/>

GENERAL NOTES:

- ALL PIPING TO CONFORM TO EASCO PIPING LIST DRAWING 8770-G-091 & 8770-FLO-099
- NO ALLOWANCE HAS BEEN MADE FOR WELLS OR GASKETS.
- ELBOWS TO BE LONG RADIUS AND INDICATED BY SHARP CORNERS. ALL PIPING 2 INCHES AND SMALLER, EXCEPT WHERE DIMENSIONED ON DRAWINGS TO BE FIELD RUN AS DIRECTED BY FIELD ENGINEER.
- FOR SMALL BRANCH PIPE CONNECTIONS, SEE DESIGN GUIDE M-10 AND M-11 AND THE PIPING LINE LIST.
- FIELD TO SET ALL PIPE SLEEVES IN CONCRETE BEFORE CONCRETE IS PLACED. SEE CONCRETE HYDRAULIC DRAWINGS FOR TYPICAL DETAILS OF PIPE SLEEVES AND PIPE OPENINGS REQUIRING SPECIAL FRAMING.
- PIPING WILL NOT BE CUT FOR COLD SPRING. SEE DESIGN GUIDE M-11.
- DESIGN AND LOCATION OF PIPE HANGERS FOR THE SUPPORT OF DEAD WEIGHT BY HANGER FABRICATOR.
- ANCHORS AND RESTRAINTS FOR SEISMIC PROTECTION TO BE DESIGNED BY HANGER FABRICATOR AT THE LOCATIONS SHOWN ON THE EASCO STRESS ANALYSIS.
- OPENINGS 8 INCHES IN DIAMETER AND OVER FOR SHOP FABRICATED PIPING, IN GRATING AND CHECKERED PLATE FLOORS, SHALL BE PROVIDED IN THE SHOP. ALL OTHER OPENINGS ARE TO BE PROVIDED IN THE FIELD.
- ALL OPENINGS EXCEPT THOSE FOR STRESS ANALYZED PIPELINES, SHALL CLEAR PIPE INSULATION BY A MINIMUM OF 1 INCH BEYOND EXTREME PIPE MOVEMENT.
- ALL PIPING CONNECTIONS TO PENETRATION SHALL BE FABRICATED TO ALLOW FOR VARIATION IN AT 2% SETTLEMENT DUE TO CONSTRUCTION TOLERANCE & SHRINKAGE DUE TO STRESS RELIEFING.
- Ⓢ DENOTES PIPING PENETRATIONS.
- THE HANGER FABRICATOR SHALL DESIGN AND LOCATE RESTRAINTS (SMOOTHERS, STOPS OR RIGID HANGERS, ACCORDING TO PIPE MOVEMENT REQUIREMENTS) SO AS TO RESIST THE THRUST OF SAFETY VALVES WHEN THEY ARE DISCHARGING.

REFERENCE DRAWINGS

- | LIST OF DRAWINGS | |
|--|----------------------|
| INSTRUMENT LIST & PIPE VALVES | 8770-A-146 |
| 2 NOT INSTALLED VALVES | 8770-B-100 |
| PIPE LINE LIST | 8770-B-092 |
| VALVE & SPECIALTY LIST | 8770-A-051 |
| FLOW DIAGRAM - CHEMICAL AND VOLUME CONTROL SYSTEM - P & I DIAGRAM - SHEET #2 | 8770-93 |
| REACTOR CONTAINMENT BLDG. PIPING PENETRATIONS | (CE LWS 1956-210-12) |
| CHEMICAL VOLUME CONTROL PIPING - SHEET #2 | 8770-G-213 |
| MISCELLANEOUS PIPING | 8770-G-194 |
| REACTOR AUX. BLDG. SHT. FLOOR DIAGRAM - PIPE WATERS | 8770-G-101 |
| WASTE MGMT. PIPING PLAN SHT. 1 | 8770-G-103 |
| ION EXCHANGER PIPING PLAN | 8770-G-104 |

INFORMATION ONLY
COPY WITH A CONTROLLED COPY BEFORE USE

REVISIONS		BY		DATE	
1	7-19-71	JC	CVD	7/19/71	
2	3-10-72	JC	CVD	3/10/72	
3	1-10-73	JC	CVD	1/10/73	
4	1-10-73	JC	CVD	1/10/73	
5	1-10-73	JC	CVD	1/10/73	
6	1-10-73	JC	CVD	1/10/73	
7	1-10-73	JC	CVD	1/10/73	
8	1-10-73	JC	CVD	1/10/73	
9	1-10-73	JC	CVD	1/10/73	
10	1-10-73	JC	CVD	1/10/73	
11	1-10-73	JC	CVD	1/10/73	
12	1-10-73	JC	CVD	1/10/73	
13	1-10-73	JC	CVD	1/10/73	
14	1-10-73	JC	CVD	1/10/73	
15	1-10-73	JC	CVD	1/10/73	
16	1-10-73	JC	CVD	1/10/73	
17	1-10-73	JC	CVD	1/10/73	
18	1-10-73	JC	CVD	1/10/73	
19	1-10-73	JC	CVD	1/10/73	

RECEIVED
AUG 11 1981

DOCUMENT CONTROL CENTER

THIS DOCUMENT IS THE PROPERTY OF EASCO SERVICES INCORPORATED. ITS USE IS EXPRESSLY RESTRICTED BY THE TERMS OF THE CONTRACT, DATED AS OF AUGUST 10, 1968, BETWEEN EASCO SERVICES INCORPORATED AND FLORIDA POWER & LIGHT COMPANY.

FLORIDA POWER & LIGHT COMPANY
HUTCHINSON ISLAND PLANT
1970-890,000 KW INSTALLATION - UNIT NO. 1
CHEMICAL & VOLUME CONTROL
PIPING - SHEET 1

EASCO SERVICES INCORPORATED NEW YORK

APPROVED
DATE 3/24/71
8770-G-195

RIDS

8204280/40

