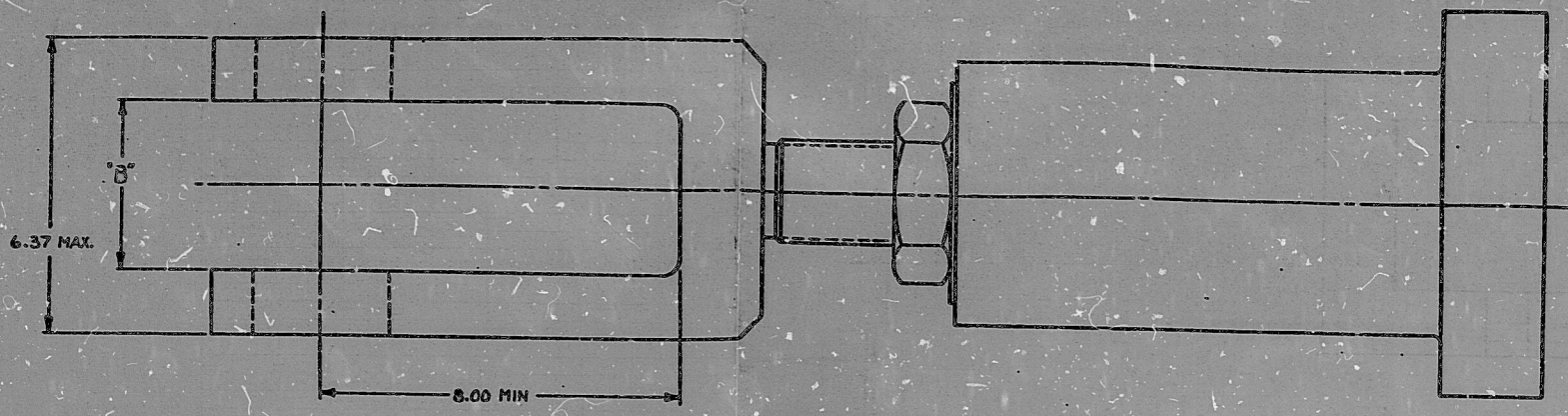


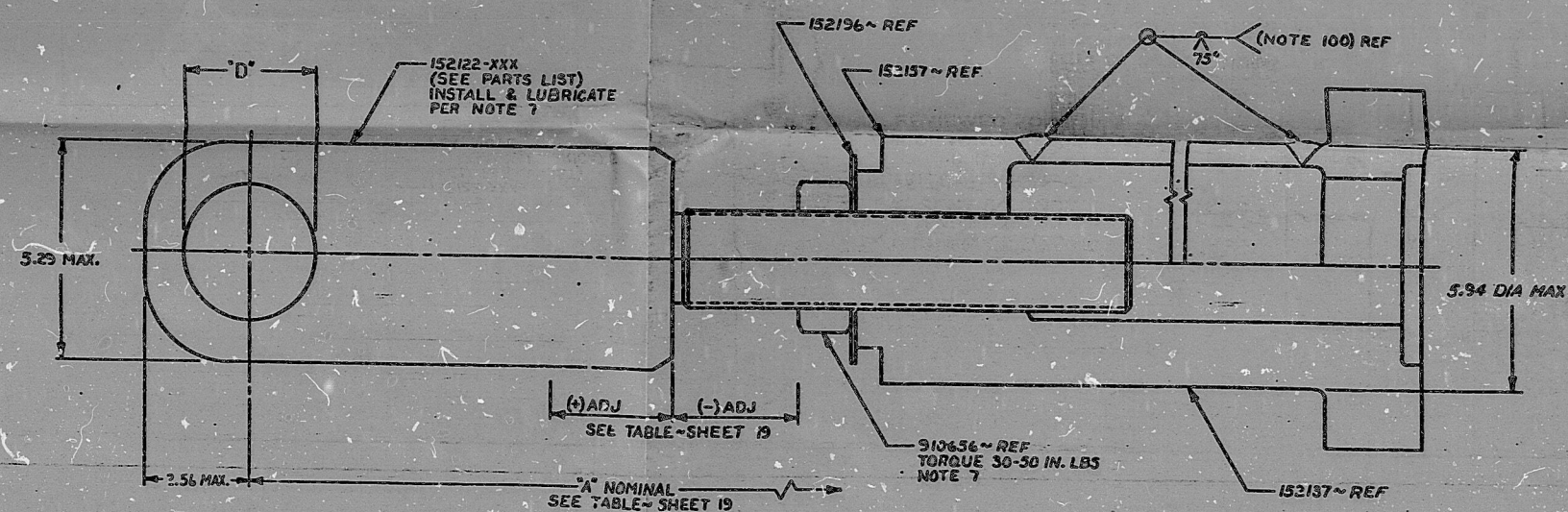
FOR REVISIONS:
SEE SHEET 1



REVIEWED FOR
CLINTON POWER STATION
UNIT 1
ILLINOIS POWER COMPANY
SARGENT & LUNDY
ENGINEERS

1. NO EXCEPTION TAKEN. CONTRACTOR MAY PROCEED WITH FABRICATION OR CONSTRUCTION IN ACCORDANCE WITH SPECIFICATION.
2. CONTRACTOR MAY PROCEED IN ACCORDANCE WITH SPECIFICATION BASED ON MAKING REVISIONS AS NOTED AND RESUBMIT.
3. REVISE AS NOTED AND RESUBMIT. HOLD FABRICATION.

ANY ACTION SHOWN ABOVE IS SUBJECT TO THE TERMS OF THE CONTRACT AND DOES NOT RELIEVE CONTRACTOR FROM HIS OBLIGATIONS UNDER THE CONTRACT, INCLUDING DESIGN AND DETAILING.
FOR SNUBBER ASSEMBLY
EQUIPMENT NO. 152-6006, 152-6006
BY R. BUTTIA DATE 06-23-01
SPEC. NO. K-2201 PROJ. NO. 4536



DETAIL X

CLINTON 1
MPL ITEM NO. 816006, 8336006
PART OR GROUP NO.

DASH NO.	"B" DIM MIN	"C" THD	"D" DIA +.0040 -.0000
152122-021	3.55	2 1/4-8UN-2A	3.2492
-022	3.55		2.9994
-023	2.73		2.4994
-024	3.55		3.2492
152122-025	2.73	2 1/4-8UN-2A	2.2494

GENERAL ELECTRIC
NUCLEAR ENERGY BUSINESS GROUP
J. Ganga 1-16-91
REVISED DATE
5502-353(3)-2
WD NO. D800772
TRANSMITTAL NO.
PRINTED TO
7260
72
3220
3220
3220

T1
APERTURE
CARD

SNUBBER ASSEMBLY
70 KIP
19156 157507
REV. 20

VPF-550B 353 (3)

F1 OF F2

8504090407

PDR RIDS

8504090407

