

REVIEWED FOR  
CLINTON POWER STATION  
UNIT 1  
BAKERS POWER COMPANY  
SARGENT & Lundy  
ENGINEERS

NO. 10. 39  
2 PLACES

105346001510041  
1053460007  
1053460008  
1053460009

NOTE 9

152048-002  
152214-001  
152030-002

152116-001

152048-008  
2-MS-2 200-75  
2-MS-2 652-10  
EDGE-UP BEEL TO BE INSTALLED  
ON ATMOSPHERIC SIDE  
2 PLACES

15202378-0007-W/E740-75  
O-RINGS INSTALLED ON  
ATMOSPHERIC SIDE  
2 PLACES

152037-001

152107-000  
INSTALL WIRE LOCKTITE  
SEE NOTE 1  
TORQUE TO 1000-2000 FT LBS

152091-101  
105332009520041-2 PLACES  
152092-017

2-434-E740-75  
2-434-E652-90  
BACK-UP RING TO BE  
INSTALLED ON ATMOSPHERIC  
SIDE - 2 PLACES

152092-017  
AT FULL EXTENDED POSITION

1.751.00  
TYP 2 PLACES  
NOTE 2

3.39 MM

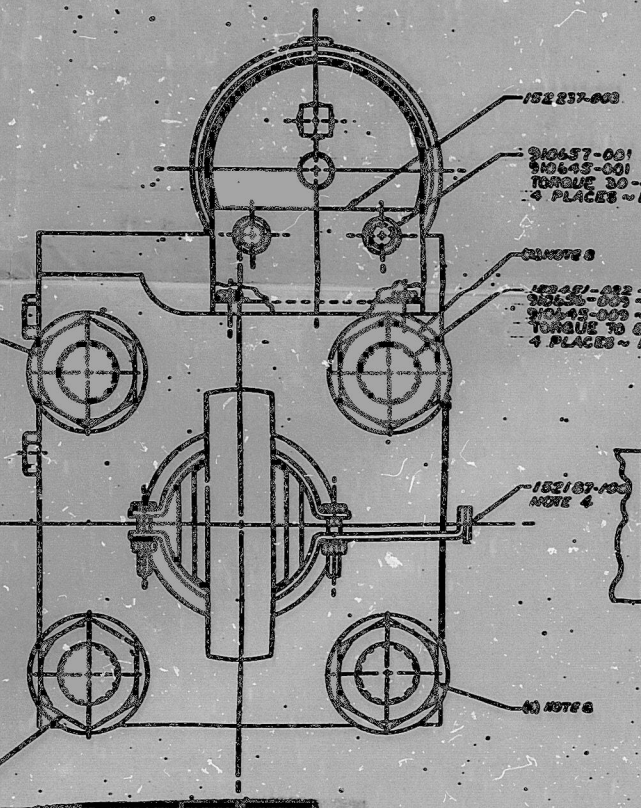
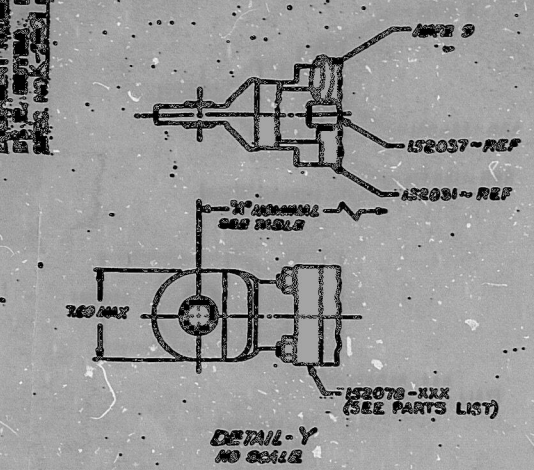
3.80 MM  
STROKE

3.80 MM  
STROKE

1.751.00  
TYP 2 PLACES  
NOTE 2

3.39 MM

AT FULL EXTENDED POSITION



SEE SHEET 1

GENERAL NOTE:  
J. Gump 1-16-91  
556-35762  
20772

REV	BY	DATE
1		
2		
3		
4		
5		

CLINTON 1  
MPL ITEM NO. 83406  
PART OR GROUP NO.

SNUBBER ASSEMBLY  
TO KIP

157507 JA

157507 A19

8504090404

FI OF F3

PDR RIDS

8504090404

