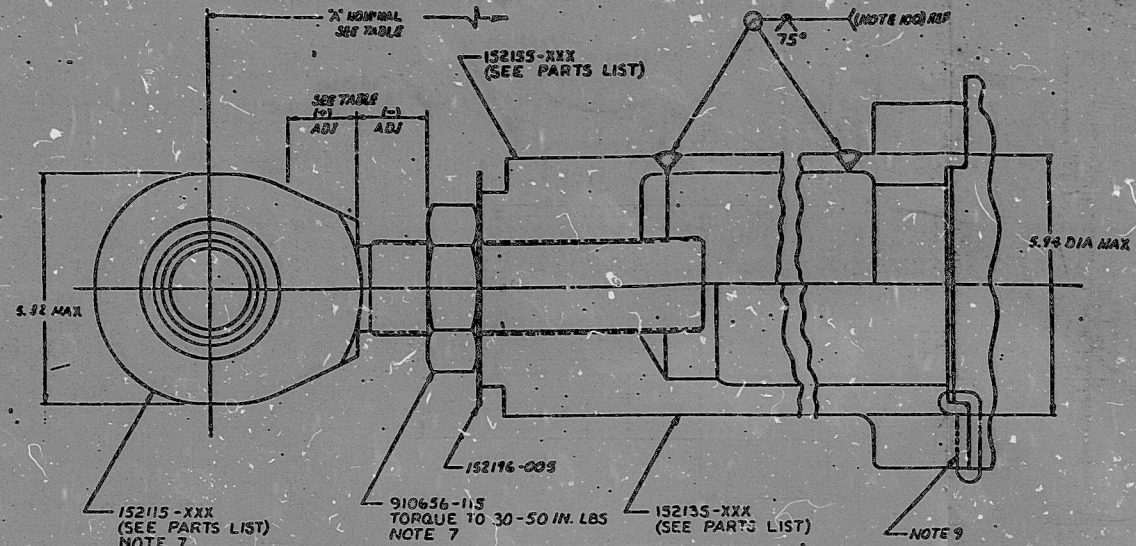
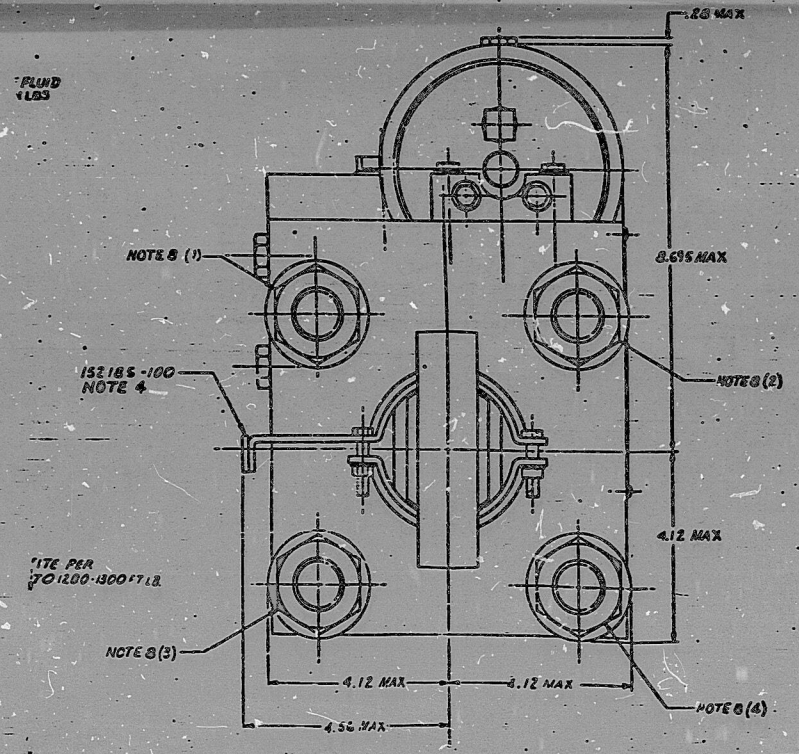


SEE SHEET 1

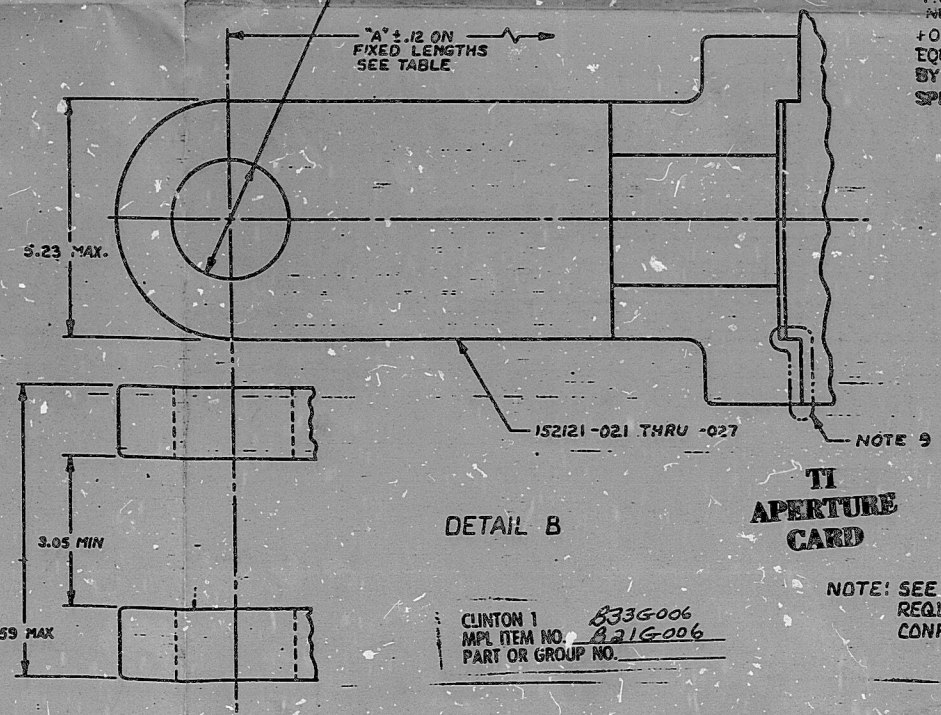


DETAIL A

- 2.0035 DIA (-027)
- 1.9995
- 2.5034 DIA (-022, -023, -024 & -026) REF
- 2.4994 DIA (-022, -023, -024 & -026) REF
- 2.2334 DIA (-021 & -025) REF
- 2.2394



DETAIL B



REVIEWED FOR
CLINTON POWER STATION
UNIT 1
ILLINOIS POWER COMPANY
SARGENT & LUNDY
ENGINEERS

- NO EXCEPTION TAKEN, CONTRACTOR MAY PROCEED WITH FABRICATION OR CONSTRUCTION IN ACCORDANCE WITH SPECIFICATION.
- CONTRACTOR MAY PROCEED IN ACCORDANCE WITH SPECIFICATION BASED ON MAKING REVISIONS AS NOTED AND RESUBMIT.
- REVISE AS NOTED AND RESUBMIT. HOLD FABRICATION.

ANY ACTION SHOWN ABOVE IS SUBJECT TO THE TERMS OF THE CONTRACT AND DOES NOT RELIEVE CONTRACTOR FROM HIS OBLIGATIONS UNDER THE CONTRACT, INCLUDING DESIGN AND DETAILING.

FOR SNUBBER ASSY
EQUIPMENT NO. 821,833-006
BY E. RUTNA DATE 05-04-82
SPEC. NO. 4-2001 PROJ. NO. 4536
4507

GENERAL ELECTRIC

J. Gange 5-4-81
DATE

5502-352(2)-2
V.P. NO.

DH10157
PROJECT NO.

776A	
PO	
1980	
392A	

SNUBBER ASSEMBLY	
50 KIP	
19156	157505
DATE	REV

F1 OF F3

VPF5508 352(2)
T-1706

8504090401

157505 A17

PDR RIDS

8504090401

