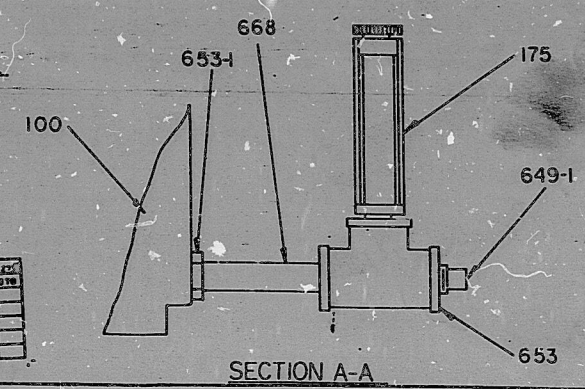


LIST OF PARTS	
PART NO.	NOMENCLATURE
100	POWER FRAME
112	CONNECTING ROD
113	CONNECTING ROD BOLT
116	CONNECTING ROD BEARING
117	CROSSHEAD
122	CROSSHEAD STUB
123	CROSSHEAD STUB DEFLECTOR
141	CROSSHEAD STUB SEAL CAP
154	CRANKCASE COVER
300	FLUID CYLINDER
317	DISCHARGE VALVE COVER
320	SUCTION VALVE
321	DISCHARGE VALVE
334	SUCTION VALVE SPRING
335	DISCHARGE VALVE SPRING
337	STUFFING BOX
338	STUFFING BOX GLAND
341	STUFFING BOX THROAT BUSHING
353	PLUNGER
366	STUFFING BOX FLANGE PLATE
367	CYLINDER HEAD COVER
368	CYLINDER HEAD EXTENSION
370	DISCHARGE VALVE STOP
617	DISCHARGE VALVE COVER, CYLINDER HEAD, AND STUFFING BOX GASKETS
180-1	ESCUTCHEON PIN
620	CRANKCASE COVER GASKET
623	CROSSHEAD SEAL CAP GASKET
632	CROSSHEAD STUB SEAL
634	CRANKCASE BREATHER
649	AMER. STD. SQ. HD. PIPE PLUG (OIL FILL)
650	SPRING PIN (CROSSHEAD STUB)
650-1	DOWEL PIN (CYL. HD. TO EXTENSION)
649-1	AMER. STD. SQ. HD. PIPE PLUG (OIL DRAIN)
152	PLUNGER COVER
180	THUMB SCREW (PLUNGER COVER)
653	FEMALE PIPE TEE
668	PIPE NIPPLE
175	OIL LEVEL GAGE (CRANKCASE)
9109	EYE BOLT (POWER FRAME)
643	AMER. STD. HEX HD. CAP SCREW (PUMP TO BASE)
679	CONNECTING ROD LOCKWASHER
650-2	CONNECTING ROD DOWEL PIN
179	CRANKCASE LUB. INSTRUCTION PLATE
179-1	N-STAMP NAMEPLATE
653-1	REDUCING BUSHING

NOTE:  
FOR PACKING ARRANGEMENT,  
SEE STUFFING BOX SECTIONAL



CLINTON 1  
A ITEM NO. C41-C001  
PART OR GROUP NO.

GENERAL ELECTRIC  
MELROSE PARK, ILLINOIS  
DATE  
APPROVED  
BY

DESIGNED BY	CHECKED BY	DATE
DRAWN BY	APPROVED BY	DATE
PROJECT NO.	REV.	DATE
DESCRIPTION	REV.	DATE
APPROVED BY	DATE	

UNION PUMP COMPANY  
ST. LOUIS, MO.  
S-D6528 /1'

REVIEWED FOR  
CLINTON POWER STATION  
UNIT 1  
ILLINOIS POWER COMPANY  
SARGENT & LUNDY  
ENGINEERS

1. NO EXECUTION SHALL BE MADE BY THE CONTRACTOR OR HIS SUBS CONTRACTOR OR ANY OTHER PARTY WITHOUT THE WRITTEN APPROVAL OF THE ENGINEERS.

2. CONTRACTOR SHALL PROCEED IN ACCORDANCE WITH SPECIFICATION BASED ON MAKING REVISIONS AS NOTED AND RESUBMIT.

3. HOLD FABRICATION.

ANY ACTION SHOWN ABOVE IS SUBJECT TO THE TERMS OF THE CONTRACT AND DOES NOT RELIEVE CONTRACTOR FROM HIS OBLIGATIONS UNDER THE CONTRACT, INCLUDING DESIGN AND DETAILING.

FOR STAMPING BY CONTRACTOR  
EQUIPMENT NO. C41-C001  
BY R. RUTINA DATE 5-28-84  
SPEC. NO. 4-200 PROJ. NO. 4-536

VPF9679-003

8504090381

TI  
APERTURE  
CARD

PDR RIDS

8504090381

