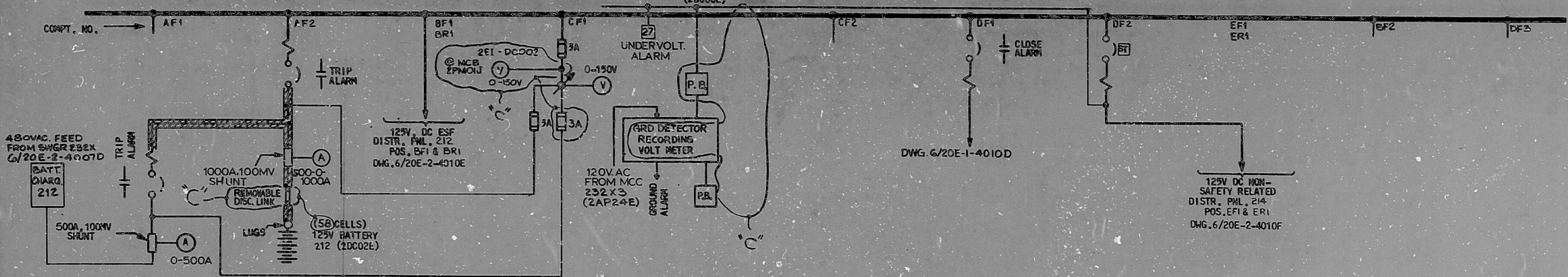
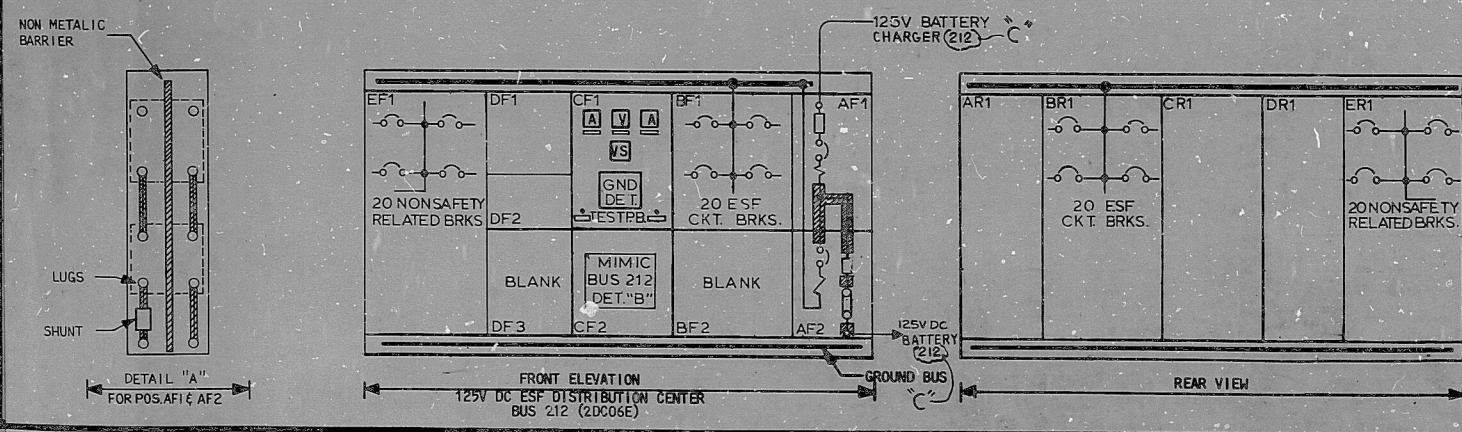
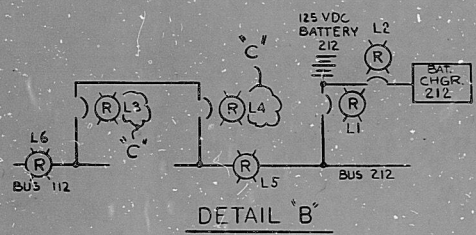


**C NUCLEAR SAFETY RELATED DIM 22**  
**125VDC ESF DISTRIBUTION CENTER BUS 212**  
 (2DC06E)



WIRING DIAG. DWG.	6/20E2-4251A		6/20E2-4251A & 4251D		6/20E2-4251B		6/20E2-4251B		6/20E2-4251C & 4251F	
SCHER. REF. 6/20E-2-4030 PG.	DC08	DC08	DC08 & DC09	DC08	DC08	DC09	DC09	DC09	DC10	
KVA OR ROTOR RATING (HP)		1600/1250					20/600	250/225		
BRK RATING/TRIP RATING (A)	600/500									
SERVICE	BATTERY CHARGER 212	125V D.C. BATTERY TO MAIN BUS 212	FEED TO 125V DC ESF DISTRIBUTION PANELS BUS 212	BATTERY CONTROL	GROUND DETECTOR	MIMIC BUS 212 (SEE DET. "B")	BUS TIE TO 125V DC ESF DISTR. CENTER BUS 112	FEED TO 125V DC NON-SAFETY RELATED DISTRIBUTION PANELS 214	NON SAFETY RELATED DISTRIBUTION PANELS BUS 214	SPACE
EQUIPMENT NO.	2DC04E	2DC02EA, 2DC02EB	2DC06EA				10C06E		2DC06EB	SPACE



NOTES  
 [Symbol] INDICATES INSULATED BUS  
 [Symbol] INDICATES SHUNT TRIP

REV.	DATE	DESCRIPTION	DRAWN	CHECKED	ENGR. APPROVAL
A	8-15-77	ELECTRICAL INSTALLATION SPEC. 212700	[Signature]	[Signature]	[Signature]
B	12-28-79	ADDED MIMIC BUS REL. FOR ESF DISTR. SPEC. 212700	[Signature]	[Signature]	[Signature]
C	12-21-80	ADDED DISC. LINK MISC. REVISIONS REL. FOR ESF DISTR. INSTALL. SPEC. 212700	[Signature]	[Signature]	[Signature]

**NUCLEAR SAFETY RELATED EQUIPMENT IS SHOWN ON THIS DRAWING.**

KEY DIAGRAM  
 125V DC ESF DISTRIBUTION CENTER BUS 212  
 (2DC06E) PART-1

**BYRON/BRAIDWOOD STATIONS-UNIT - 2**  
**COMMONWEALTH EDISON CO.**  
 CHICAGO, ILLINOIS

SCALE: NONE

DRAWN: [Signature] 8-16-77  
 CHECKED: [Signature] 8-16-77  
 ENGINEER: [Signature] 8-16-77

APPROVED: [Signature] 8-16-77

JOB NO. 4392  
 4684

DRAWING NO. 8108 020460  
 BYRON 08-2-4010D  
 BRAIDWOOD 08-2-4010D

BBHE-3919 (B), BBHE-5228 (C)

C4



RIDS-PDR

8103020460

