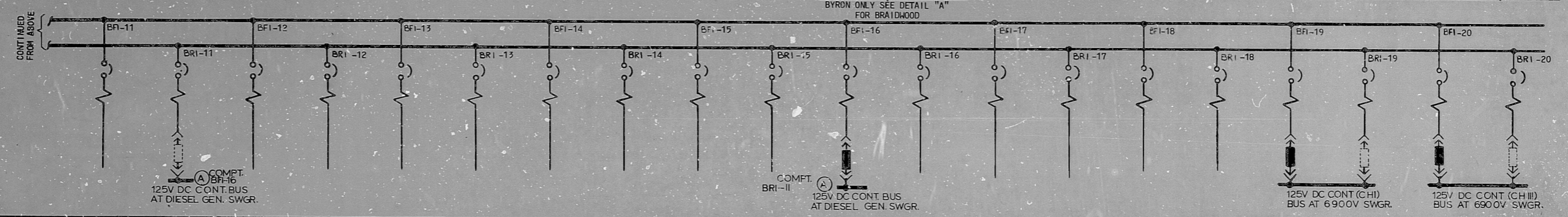
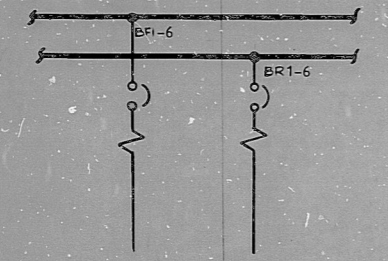


| WIRING DIAGRAM DWG.       | 6/20E2-4250A                   | 6/20E2-4250D                   |       |       | 6/20E2-4250A                                     | 6/20E2-4250D                                     | 6/20E2-4250A | 6/20E2-4250D    |  |       | 6/20E2-4250D | 6/20E2-4250A | 6/20E2-4250D |       |       | 6/20E2-4250D | 6/20E2-4250A |                                   |
|---------------------------|--------------------------------|--------------------------------|-------|-------|--|--|--------------|-----------------|--|-------|--------------|--------------|--------------|-------|-------|--------------|--------------|-----------------------------------|
| SCHEM. REF.               | 6/20E-2-4030 PG. DC05          | 7C06                           |       |       | DC05   | DC06   | DC05         | DC06            |  |       | DC05         | DC06         |              |       |       |              |              | DC06                              |
| KVA RATING                | 7.5                            | 7.5                            |       |       |  |  |              |                 |  |       |              |              |              |       |       |              |              |                                   |
| BKR FRAME/TRIP RATING (A) | 100                            | 100                            | 70    | 70    | 70   | 70   | 70           | 70              | 70   | 70    | 70           | 70           | 70           | 70    | 70    | 70           | 70           | 70                                |
| SERVICE                   | INSTR. BUS 211<br>INVERTER 211 | INSTR. BUS 213<br>INVERTER 213 | SPARE | SPARE | MAIN & RESERVE FEED<br>4160V ESF SWGR<br>BUS 241 | MAIN & RESERVE FEED<br>480V ESF BUS 231X<br>SWGR | SPARE        | ESF FUSE<br>PNL | MAIN & RESERVE FEED<br>480V ESF BUS 231Z<br>SWGR | SPARE | SPARE        | SPARE        | SPARE        | SPARE | SPARE | SPARE        | SPARE        | ESF SEQUEN.<br>ACTUATION<br>CAB A |
| EQUIPMENT NO.             | 21P05E                         | 21P07E                         |       |       | 2AP05ET  | 2AP10EA  |              | 2DC10J          | 2AP99EA  |       |              |              |              |       |       |              |              | 2PA13J                            |



| WIRING DIAGRAM DWG.       | 6/20E2-4250D | 6/20E2-4250A                                | 6/20E2-4250D         |  |       | 6/20E2-4250D        | 6/20E2-4250A             |       |       | 6/20E2-4250D   | 6/20E2-4250A                                | 6/20E2-4250D              | 6/20E2-4250A | 6/20E2-4250D                                   | 6/20E2-4250A | 6/20E2-4250D        |  |  |
|---------------------------|--------------|---|----------------------|--|-------|---------------------|--------------------------|-------|-------|----------------|---|---------------------------|--------------|--|--------------|---------------------|--|--|
| SCHEM. REF.               |              | DC06  | DC05                 | DC06                                       |       | DC06                | DC05                     | DC06  | DC05  | DC06           | DC05  | DC06                      | DC05         | DC06   | DC05         | DC06                |  |  |
| KVA RATING                |              |   |                      |  |       |                     |                          |       |       |                |   |                           |              |  |              |                     |  |  |
| BKR FRAME/TRIP RATING (A) | 70           | 30  | 50                   | 20   | 50    | 20                  | 40                       | 20    | 40    | 20             | 30  | 20                        | 30           | 20   | 20           | 20                  |  |  |
| SERVICE                   | SPARE        | RES. FEED<br>DIESEL GEN<br>2A<br>CONT. PNL. | REACTOR TRIP<br>SWGR | AUX. FD. WTR.<br>PUMP 2A<br>DISCH TEST VLK | SPARE | AUX. SFG.<br>CAB. A | MCB CNTMT<br>ISOL. SECT. | SPARE | SPARE | M C B<br>HVA C | MAIN FEED<br>DIESEL GEN<br>2A<br>CONT. PNL. | REMOTE<br>SHUTDOWN<br>PNL | SPARE        | DIESEL GEN<br>2A<br>CONT. PNL.<br>FLD. FLASH'G | SPARE        | ANNUN. INPUT<br>CAB | MAIN & RESERVE FEED<br>6900V SWGR 259<br>(REACTOR COOLANT PUMP 2D) | MAIN & RESERVE FEED<br>6900V SWGR 257<br>(REACTOR COOLANT PUMP 2A) |
| EQUIPMENT NO.             |              | 2PLO7J                                      | 2R005E               | 2AF004A                                    |       | 2PA27J              | 2PM11J                   |       |       | OPMO2J         | 2PLO7J                                      | 2PLO4J                    |              | 2PLO7J   |              | 2PA31J              | 2AP75EG  | 2APO3EG  |



| WIRING DIAGRAM DWG.       |                  |       |
|---------------------------|------------------|-------|
| SCHEM. REF.               | 6/20E-2-4030 PG. |       |
| KVA RATING                |                  |       |
| BKR FRAME/TRIP RATING (A) | 70               | 70    |
| SERVICE                   | SPARE            | SPARE |
| EQUIPMENT NO.             |                  |       |

DETAIL "A" FOR BRAIDWOOD ONLY

| REV. | DATE     | DESCRIPTION   | ENGR. APPROVAL |
|------|----------|---|----------------|
| A    | 8-16-77  | ELECTRICAL INSTALLATION SPEC PL 2790                              | [Signature]    |
| B    | 12-28-79 | REV SERVICES ABOVE REVISIONS REL. FROM ELECT INSTAL. SPEC PL 2790 | [Signature]    |
| C    | 02-31-80 | MISC. REVISIONS REL. FOR ELECTR. INSTAL. SPEC. PL 2790            | [Signature]    |

| REV. | DATE     | DESCRIPTION   | ENGR. APPROVAL |
|------|----------|---|----------------|
| A    | 8-16-77  | ELECTRICAL INSTALLATION SPEC PL 2790                              | [Signature]    |
| B    | 12-28-79 | REV SERVICES ABOVE REVISIONS REL. FROM ELECT INSTAL. SPEC PL 2790 | [Signature]    |
| C    | 02-31-80 | MISC. REVISIONS REL. FOR ELECTR. INSTAL. SPEC. PL 2790            | [Signature]    |

TERA APERTURE CARD

**NUCLEAR SAFETY RELATED EQUIPMENT IS SHOWN ON THIS DRAWING.**

KEY DIAGRAM  
125V DC ESF DISTRIBUTION CENTER BUS 211  
(2DC05E) PART-2

**BYRON/BRAIDWOOD STATIONS-UNIT-2  
COMMONWEALTH EDISON CO.  
CHICAGO, ILLINOIS**

SCALE: None

DRAWN: J. Trudewick 8-15-77

CHECKED: C. Davis 8-16-77

ENGINEER: C. Davis 8-15-77

APPROVED: [Signature]

DRAWING NO. 810302U440

BYRON 5E-2-4010B  
BRAIDWOOD 20E-2-4010B

RDS-RDR

8103020440

