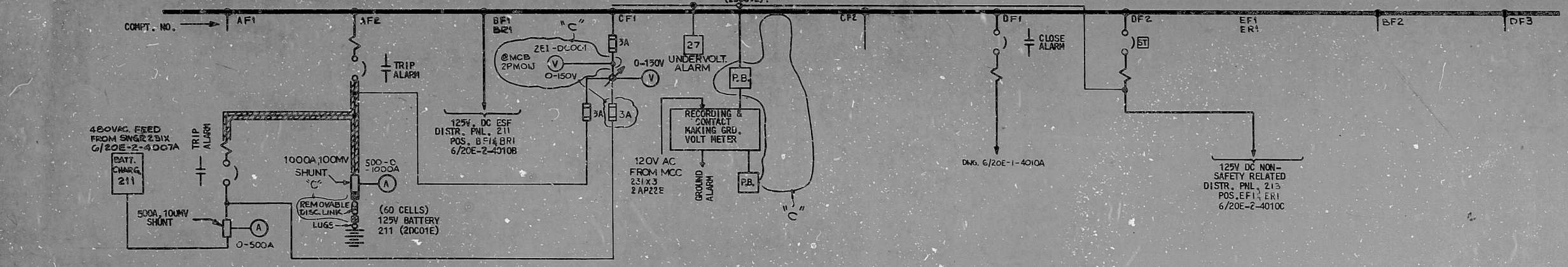
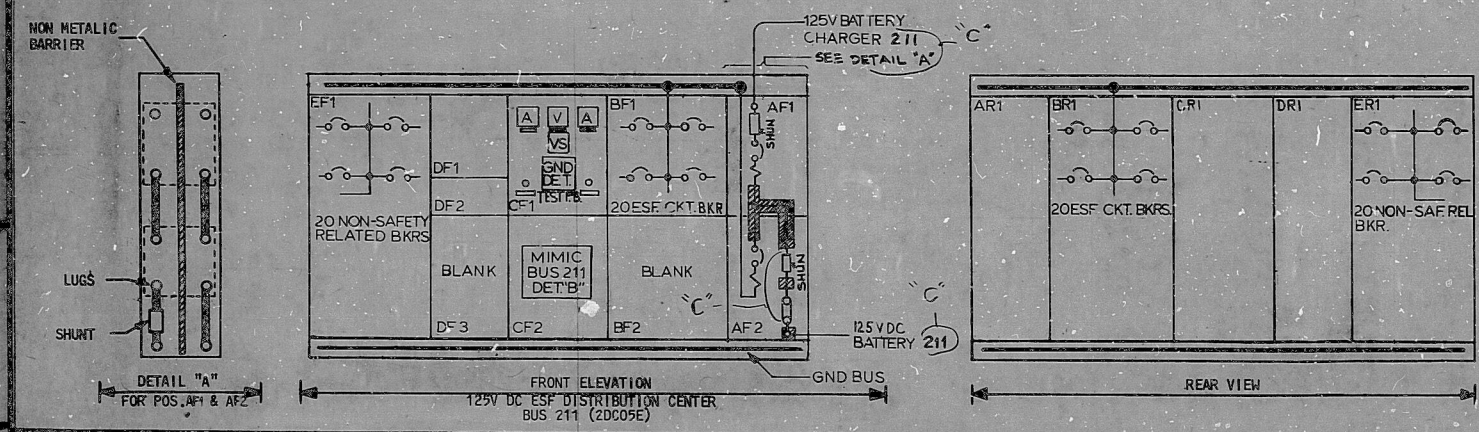
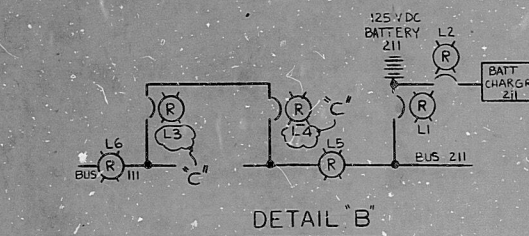


NUCLEAR SAFETY RELATED DIV. 21
125VDC ESF DISTRIBUTION CENTER BUS 211
 (2DC05E)



WIRING DIAG. NO.	6/20E-2-4250A	6/20E-2-4250A & 4250D	6/20E-2-4250B	6/20E-2-4250B	6/20E-2-4250B	6/20E-2-4250B	6/20E-2-4250C & 4250F
SCREEN. REF.	DC05	DC05	DC05 & DC05	DC05	DC05	DC06	DC06
KVA OR MOTOR RATING (HP)	600/500	1600/1200				600/600	250/225
BKR FRAME/TRIP RATING (A)							
SERVICE	BATTERY CHARGER 211	125V D.C. BATTERY TO MAIN BUS 211	FEED TO 125V DC ESF DISTRIBUTION PANEL BUS 211	BATTERY CONTROL	GROUND DETECTOR	MIMIC BUS 211 (SEE DET. "B")	BUS TIE TO 125V DC ESF DISTR. CENTER BUS 111
EQUIPMENT NO.	2DC05E	2DC01EA, 2DC01EB	2DC05EA				1DC05E



NOTES

INDICATES INSULATED BUS

BT - INDICATES SHUNT TRIP

REFERENCE DRAWINGS

REV.	DATE	DESCRIPTION	DRAWN	CHECKED	APPROVAL
A	8-16-78	ELECTRICAL INSTALLATION SPEC. 2770	J. J. J.	J. J. J.	
B	12-28-78	ADDED MIMIC BUS REL. FOR ESF DIST. PANEL BUS 211	J. J. J.	J. J. J.	
C	12-28-78	MISC. REVISIONS REL. FOR ESF DIST. PANEL BUS 211	J. J. J.	J. J. J.	

NUCLEAR SAFETY RELATED EQUIPMENT IS SHOWN ON THIS DRAWING

KEY DIAGRAM
 125V DC ESF DISTRIBUTION CENTER BUS 211
 (2DC05E) PART-1

BYRON/BRADWOOD STATIONS - UNIT - 2
COMMONWEALTH EDISON CO.
 CHICAGO, ILLINOIS

SCALE: NONE

DRAWN: J. J. J. 8-15-78

CHECKED: J. J. J. 8-16-78

ENGINEER: J. J. J. 8-16-78

APPROVED: J. J. J. 8-16-78

WORK NO. 4392

4684

DRAWING NO.
 8108020433

BYRON C-2-4010A

BRADWOOD C-2-4010A

BBHE-3919 (B), (BBHE-5236(C))

RIDS-RDR

8103020433

