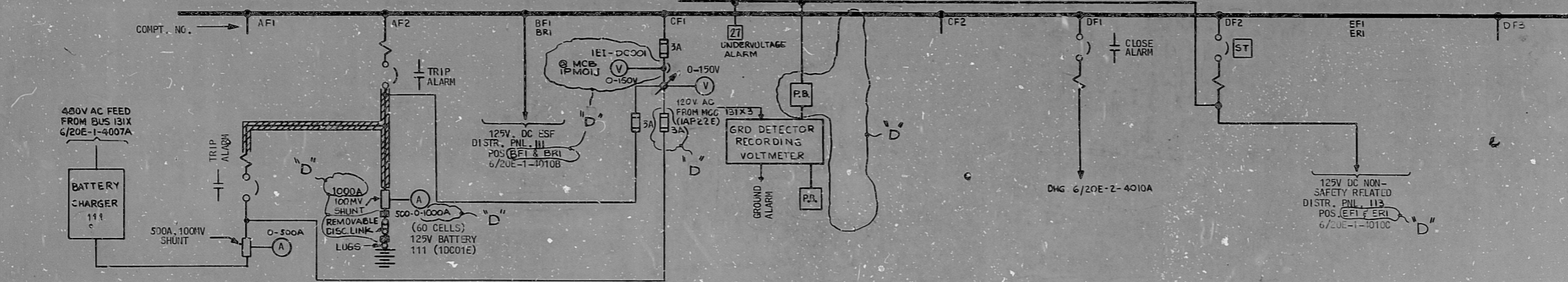
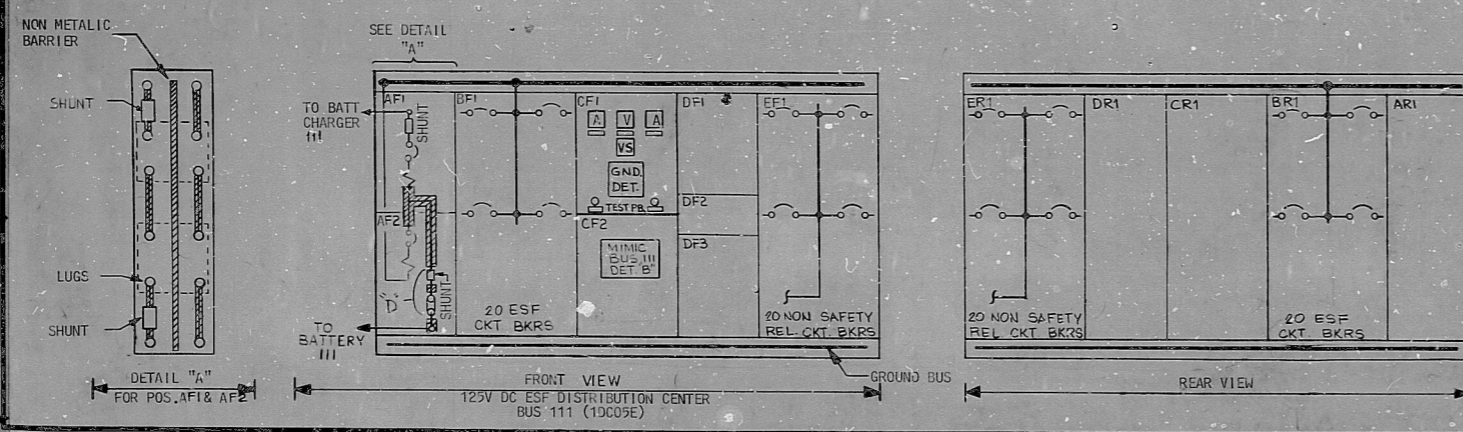
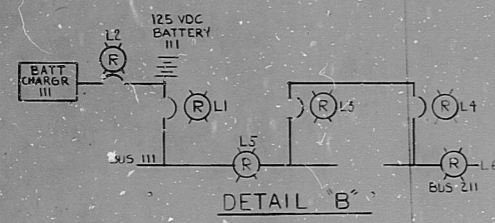


NUCLEAR SAFETY RELATED DIV. 10
125VDC ESF DISTRIBUTION CENTER BUS III (1DC05E)



WIRING DIAG. DIV.	6/20E-1-4250A		6/20E-1-4250A & D		6/20E-1-4250A & D		6/20E-1-4250B		6/20E-1-4250C & F	
	DC05	DC05	DC05 & DC06	DC05	DC06	DC06	DC06	DC07	DC07	SPACE
SCHEM. REF. 6/20E-1-4030 PG.										
KVA OR MOTOR RATING (HP)	600/500	1600/1200								
BKR FRAME/TRIP RATING (A)										
SERVICE	BATTERY CHARGER 111	125V D.C. BATTERY F.D. TO MAIN BUS 111	FEED TO 125V DC ESF DISTRIBUTION PANEL III	BATTERY CONTROL	GROUND DETECTOR	MIMIC BUS III (SEE DETAIL B)	BUS TIE TO 125V DC ESF DISTR. CENTER BUS 211	FEED TO 125V DC NON-SAFETY RELATED DISTRIBUTION PANEL III	NON SAFETY RELATED DISTRIBUTION PANEL 113	
EQUIPMENT NO.	1DC05E	1DC05EA, 1DC05EB	1DC05EA				2DC05E		1DC05EB	



NOTES		DRAWING RELEASE RECORD		DRAWN	
REV	DATE	DESCRIPTION	CHECKED	ENGR. APPROVAL	DATE
A	9-10-76	ELECTRICAL INSTALLATION SPEC 7/2790			
D	11-31-74	MISC. REVISION REL. FOR ELECT. INSTALLATION SPEC 7/2730			

NUCLEAR SAFETY RELATED EQUIPMENT IS SHOWN ON THIS DRAWING

KEY DIAGRAM
125V DC ESF DISTRIBUTION CENTER BUS 111 (1DC05E) PART-1

BYRON/BRADWOOD STATIONS-UNIT -1
COMMONWEALTH EDISON CO.
CHICAGO, ILLINOIS

SCALE: *M/Koa* 5-21-76
DRAWN: *M/Koa* 5-21-76
CHECKED: *J.H.S.* 9-10-76
ENGINEER: *E.W. Bickler* 9/23/76

DRAWING NO. 5103020380
BYRON 85-4010A
BRADWOOD 20E-4010A

FORMERLY 6/20E-ES-10



BBHE-3456(C), BB AE-5736(D)

PIDS-PDR

8103020380

