

NOTES

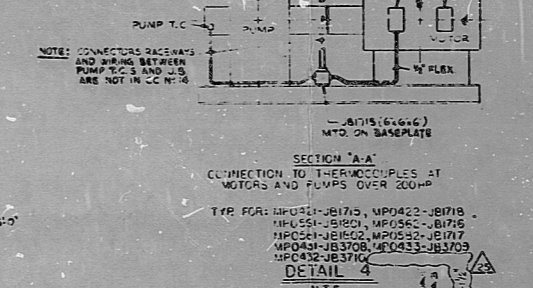
- FOR INSTALLATION OF RACEWAY SYSTEMS SEE INFORMATION 7743-814
- ALL LOCAL CONTROL SYSTEMS TO BE INSTALLED 6'-6" TO 8' IN STATION ABOVE FLOOR OR PLATFORM
- ALL RACEWAYS & EQUIPMENT LOCATIONS TO BE INDICATED ON 2-D & 3-D DRAWINGS
- USE AUTOMATIC AIR SOURCE SEE 814-7743-814
- THE PUMP IS TO BE OPERATED BY CONDUIT TO BE RUN AS NOT TO EXCEED PRESSURE RATES AS INDICATED ON DRAWING OF THE PUMP

REFERENCE DRAWINGS

- C-200 AUX BLDG FOUNDATION MAY EL 545'-0" AREA B
- C-240 AUX BLDG BLOCKOUTS/EQUIPMENT ROOMS ANCHOR BOLT/ & DRAINAGE EL 545'-0"
- C-250 AUX BLDG PLATFORMS I DETAILS EL 545'-0"
- C-259 AUX BLDG FRAMING PLAN EL 545'-0"
- M-125 EQUIPMENT LOCATIONS CONTAINMENT / AUX BLDG PLAN EL 545'-0"
- M-263B DRIFING SYSTEM COMPOSITE AUX BLDG EL 545'-0" AREA B
- M-414 HEATING, VENTILATING & AIR CONDITIONING AUX BLDG EL 545'-0"
- E-11A ELECTRICAL NUMBERING SYSTEM
- E-3000 ELECTRICAL RACEWAY SCHEDULE
- E-304 ELECTRICAL GROUNDING STANDARDS I DETAILS
- E-302A ELECTRICAL STANDARDS I DETAILS
- E-331 RACEWAY & GROUNDING AUX BLDG EL (I) 545'-0" AREA B
- E-334 RACEWAY & GROUNDING AUX BLDG EL (I) 545'-0" AREA B
- M-170 RUSTE LOCATIONS CONT / AUX BLDG EL 545'-0"

90φ1φ3φ392

SI APERTURE CARD



LEGEND

- BLOCK WALL
- ROOM NUMBER
- FIREWALL
- MOTOR OPERATED VALVE
- SOLENOID VALVE
- ARMATURE LOCATED
- TEE CONDUIT
- NEGATIVE PRESSURE BOUNDARY

NO.	DESCRIPTION	REV.	DATE	BY	CHKD.
1	ISSUED FOR CONSTRUCTION	1	11/15/57	W.D.	W.D.
2	ISSUED FOR CONSTRUCTION	1	11/15/57	W.D.	W.D.
3	ISSUED FOR CONSTRUCTION	1	11/15/57	W.D.	W.D.
4	ISSUED FOR CONSTRUCTION	1	11/15/57	W.D.	W.D.
5	ISSUED FOR CONSTRUCTION	1	11/15/57	W.D.	W.D.
6	ISSUED FOR CONSTRUCTION	1	11/15/57	W.D.	W.D.
7	ISSUED FOR CONSTRUCTION	1	11/15/57	W.D.	W.D.
8	ISSUED FOR CONSTRUCTION	1	11/15/57	W.D.	W.D.
9	ISSUED FOR CONSTRUCTION	1	11/15/57	W.D.	W.D.
10	ISSUED FOR CONSTRUCTION	1	11/15/57	W.D.	W.D.
11	ISSUED FOR CONSTRUCTION	1	11/15/57	W.D.	W.D.
12	ISSUED FOR CONSTRUCTION	1	11/15/57	W.D.	W.D.
13	ISSUED FOR CONSTRUCTION	1	11/15/57	W.D.	W.D.
14	ISSUED FOR CONSTRUCTION	1	11/15/57	W.D.	W.D.

BECHTEL COMPANY
 DAVIS-BESSE NUCLEAR POWER STATION
 THE CLEVELAND ELECTRIC LABORATORY COMPANY
RACEWAY
 AUX. BLDG. FLOOR (I) 545'-0" AREA B

7749	E-412	25
------	-------	----

I CERTIFY THAT THE DRAWING CONTAINED ON THIS DRAWING HAS BEEN MADE IN ACCORDANCE WITH THE REQUIREMENTS OF THE DESIGN AND CONSTRUCTION OF THE RACEWAY SYSTEM AND THAT THE DRAWING IS AN ACCURATE REPRESENTATION OF THE RACEWAY SYSTEM AS DESIGNED AND CONSTRUCTED.

W.D. (Signature)

PDR RIDS

9001030392

