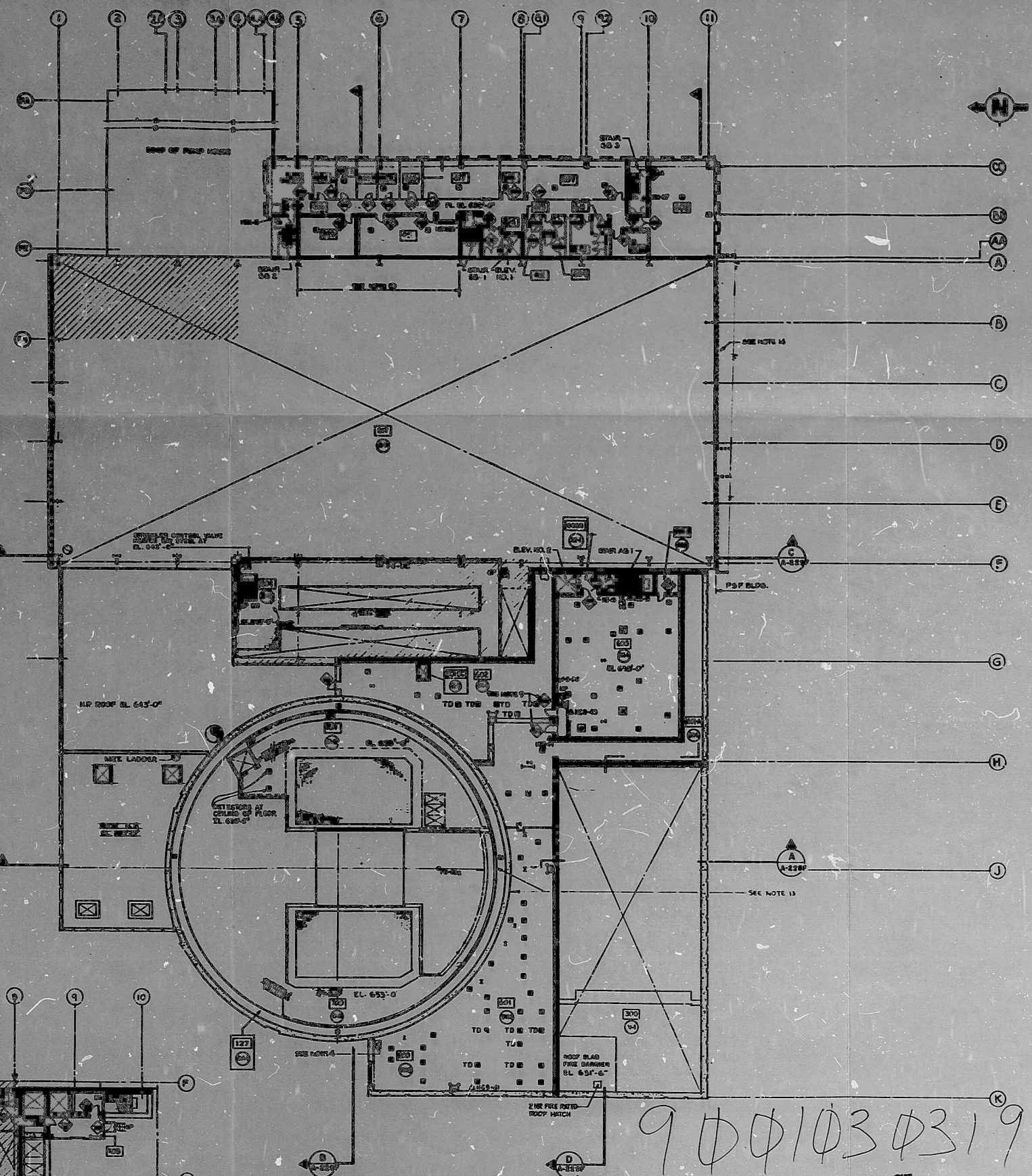
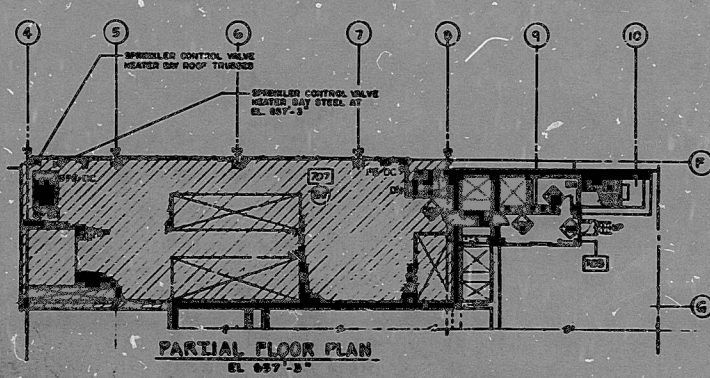


| SPACE NO. | SPACE DESCRIPTION | FIRE AREA @ 200 LB/FT ² | ROOF SLAB |
|-----------|-------------------|------------------------------------|-----------|
| 000 | GENERAL OFFICE | 100-0 | YES |
| 001 | GENERAL OFFICE | 100-0 | YES |
| 002 | GENERAL OFFICE | 100-0 | YES |
| 003 | GENERAL OFFICE | 100-0 | YES |
| 004 | GENERAL OFFICE | 100-0 | YES |
| 005 | GENERAL OFFICE | 100-0 | YES |
| 006 | GENERAL OFFICE | 100-0 | YES |
| 007 | GENERAL OFFICE | 100-0 | YES |
| 008 | GENERAL OFFICE | 100-0 | YES |
| 009 | GENERAL OFFICE | 100-0 | YES |
| 010 | GENERAL OFFICE | 100-0 | YES |
| 011 | GENERAL OFFICE | 100-0 | YES |
| 012 | GENERAL OFFICE | 100-0 | YES |
| 013 | GENERAL OFFICE | 100-0 | YES |
| 014 | GENERAL OFFICE | 100-0 | YES |
| 015 | GENERAL OFFICE | 100-0 | YES |
| 016 | GENERAL OFFICE | 100-0 | YES |
| 017 | GENERAL OFFICE | 100-0 | YES |
| 018 | GENERAL OFFICE | 100-0 | YES |
| 019 | GENERAL OFFICE | 100-0 | YES |
| 020 | GENERAL OFFICE | 100-0 | YES |
| 021 | GENERAL OFFICE | 100-0 | YES |
| 022 | GENERAL OFFICE | 100-0 | YES |
| 023 | GENERAL OFFICE | 100-0 | YES |
| 024 | GENERAL OFFICE | 100-0 | YES |
| 025 | GENERAL OFFICE | 100-0 | YES |
| 026 | GENERAL OFFICE | 100-0 | YES |
| 027 | GENERAL OFFICE | 100-0 | YES |
| 028 | GENERAL OFFICE | 100-0 | YES |
| 029 | GENERAL OFFICE | 100-0 | YES |
| 030 | GENERAL OFFICE | 100-0 | YES |
| 031 | GENERAL OFFICE | 100-0 | YES |
| 032 | GENERAL OFFICE | 100-0 | YES |
| 033 | GENERAL OFFICE | 100-0 | YES |
| 034 | GENERAL OFFICE | 100-0 | YES |
| 035 | GENERAL OFFICE | 100-0 | YES |
| 036 | GENERAL OFFICE | 100-0 | YES |
| 037 | GENERAL OFFICE | 100-0 | YES |
| 038 | GENERAL OFFICE | 100-0 | YES |
| 039 | GENERAL OFFICE | 100-0 | YES |
| 040 | GENERAL OFFICE | 100-0 | YES |
| 041 | GENERAL OFFICE | 100-0 | YES |
| 042 | GENERAL OFFICE | 100-0 | YES |
| 043 | GENERAL OFFICE | 100-0 | YES |
| 044 | GENERAL OFFICE | 100-0 | YES |
| 045 | GENERAL OFFICE | 100-0 | YES |
| 046 | GENERAL OFFICE | 100-0 | YES |
| 047 | GENERAL OFFICE | 100-0 | YES |
| 048 | GENERAL OFFICE | 100-0 | YES |
| 049 | GENERAL OFFICE | 100-0 | YES |
| 050 | GENERAL OFFICE | 100-0 | YES |
| 051 | GENERAL OFFICE | 100-0 | YES |
| 052 | GENERAL OFFICE | 100-0 | YES |
| 053 | GENERAL OFFICE | 100-0 | YES |
| 054 | GENERAL OFFICE | 100-0 | YES |
| 055 | GENERAL OFFICE | 100-0 | YES |
| 056 | GENERAL OFFICE | 100-0 | YES |
| 057 | GENERAL OFFICE | 100-0 | YES |
| 058 | GENERAL OFFICE | 100-0 | YES |
| 059 | GENERAL OFFICE | 100-0 | YES |
| 060 | GENERAL OFFICE | 100-0 | YES |
| 061 | GENERAL OFFICE | 100-0 | YES |
| 062 | GENERAL OFFICE | 100-0 | YES |
| 063 | GENERAL OFFICE | 100-0 | YES |
| 064 | GENERAL OFFICE | 100-0 | YES |
| 065 | GENERAL OFFICE | 100-0 | YES |
| 066 | GENERAL OFFICE | 100-0 | YES |
| 067 | GENERAL OFFICE | 100-0 | YES |
| 068 | GENERAL OFFICE | 100-0 | YES |
| 069 | GENERAL OFFICE | 100-0 | YES |
| 070 | GENERAL OFFICE | 100-0 | YES |
| 071 | GENERAL OFFICE | 100-0 | YES |
| 072 | GENERAL OFFICE | 100-0 | YES |
| 073 | GENERAL OFFICE | 100-0 | YES |
| 074 | GENERAL OFFICE | 100-0 | YES |
| 075 | GENERAL OFFICE | 100-0 | YES |
| 076 | GENERAL OFFICE | 100-0 | YES |
| 077 | GENERAL OFFICE | 100-0 | YES |
| 078 | GENERAL OFFICE | 100-0 | YES |
| 079 | GENERAL OFFICE | 100-0 | YES |
| 080 | GENERAL OFFICE | 100-0 | YES |
| 081 | GENERAL OFFICE | 100-0 | YES |
| 082 | GENERAL OFFICE | 100-0 | YES |
| 083 | GENERAL OFFICE | 100-0 | YES |
| 084 | GENERAL OFFICE | 100-0 | YES |
| 085 | GENERAL OFFICE | 100-0 | YES |
| 086 | GENERAL OFFICE | 100-0 | YES |
| 087 | GENERAL OFFICE | 100-0 | YES |
| 088 | GENERAL OFFICE | 100-0 | YES |
| 089 | GENERAL OFFICE | 100-0 | YES |
| 090 | GENERAL OFFICE | 100-0 | YES |
| 091 | GENERAL OFFICE | 100-0 | YES |
| 092 | GENERAL OFFICE | 100-0 | YES |
| 093 | GENERAL OFFICE | 100-0 | YES |
| 094 | GENERAL OFFICE | 100-0 | YES |
| 095 | GENERAL OFFICE | 100-0 | YES |
| 096 | GENERAL OFFICE | 100-0 | YES |
| 097 | GENERAL OFFICE | 100-0 | YES |
| 098 | GENERAL OFFICE | 100-0 | YES |
| 099 | GENERAL OFFICE | 100-0 | YES |
| 100 | GENERAL OFFICE | 100-0 | YES |

| NOSE STATION NUMBER | TYPE OF NOSE STATION | DESIGN NOSE LENGTH (FT) SEE NOTE 7 |
|---------------------|----------------------|------------------------------------|
| HC-31 | CABINET | 7.5 |
| HC-43 | CABINET | 7.5 |
| HC-45 | CABINET | 7.5 |
| HC-41 | CABINET | 7.5 |
| HR-27 | RACK | 7.5 |
| HR-25 | RACK | 7.5 |
| HR-11 | RACK | 7.5 |
| HC-16 | CONNECTION | N/A |



1. THIS DRAWING SHOWS THE GENERAL FIRE PROTECTION SYSTEM AND THE LOCATION OF THE FIRE PROTECTION SYSTEM COMPONENTS.
2. THE FIRE PROTECTION SYSTEM IS TO BE INSTALLED AND MAINTAINED IN ACCORDANCE WITH THE REQUIREMENTS OF THE NATIONAL FIRE PROTECTION ASSOCIATION (NFPA) 90B, 90A, 90C, 90D, 90E, 90F, 90G, 90H, 90I, 90J, 90K, 90L, 90M, 90N, 90O, 90P, 90Q, 90R, 90S, 90T, 90U, 90V, 90W, 90X, 90Y, 90Z.
3. THE FIRE PROTECTION SYSTEM IS TO BE INSTALLED AND MAINTAINED IN ACCORDANCE WITH THE REQUIREMENTS OF THE NATIONAL FIRE PROTECTION ASSOCIATION (NFPA) 90B, 90A, 90C, 90D, 90E, 90F, 90G, 90H, 90I, 90J, 90K, 90L, 90M, 90N, 90O, 90P, 90Q, 90R, 90S, 90T, 90U, 90V, 90W, 90X, 90Y, 90Z.
4. THE FIRE PROTECTION SYSTEM IS TO BE INSTALLED AND MAINTAINED IN ACCORDANCE WITH THE REQUIREMENTS OF THE NATIONAL FIRE PROTECTION ASSOCIATION (NFPA) 90B, 90A, 90C, 90D, 90E, 90F, 90G, 90H, 90I, 90J, 90K, 90L, 90M, 90N, 90O, 90P, 90Q, 90R, 90S, 90T, 90U, 90V, 90W, 90X, 90Y, 90Z.
5. THE FIRE PROTECTION SYSTEM IS TO BE INSTALLED AND MAINTAINED IN ACCORDANCE WITH THE REQUIREMENTS OF THE NATIONAL FIRE PROTECTION ASSOCIATION (NFPA) 90B, 90A, 90C, 90D, 90E, 90F, 90G, 90H, 90I, 90J, 90K, 90L, 90M, 90N, 90O, 90P, 90Q, 90R, 90S, 90T, 90U, 90V, 90W, 90X, 90Y, 90Z.
6. THE FIRE PROTECTION SYSTEM IS TO BE INSTALLED AND MAINTAINED IN ACCORDANCE WITH THE REQUIREMENTS OF THE NATIONAL FIRE PROTECTION ASSOCIATION (NFPA) 90B, 90A, 90C, 90D, 90E, 90F, 90G, 90H, 90I, 90J, 90K, 90L, 90M, 90N, 90O, 90P, 90Q, 90R, 90S, 90T, 90U, 90V, 90W, 90X, 90Y, 90Z.
7. THE FIRE PROTECTION SYSTEM IS TO BE INSTALLED AND MAINTAINED IN ACCORDANCE WITH THE REQUIREMENTS OF THE NATIONAL FIRE PROTECTION ASSOCIATION (NFPA) 90B, 90A, 90C, 90D, 90E, 90F, 90G, 90H, 90I, 90J, 90K, 90L, 90M, 90N, 90O, 90P, 90Q, 90R, 90S, 90T, 90U, 90V, 90W, 90X, 90Y, 90Z.
8. THE FIRE PROTECTION SYSTEM IS TO BE INSTALLED AND MAINTAINED IN ACCORDANCE WITH THE REQUIREMENTS OF THE NATIONAL FIRE PROTECTION ASSOCIATION (NFPA) 90B, 90A, 90C, 90D, 90E, 90F, 90G, 90H, 90I, 90J, 90K, 90L, 90M, 90N, 90O, 90P, 90Q, 90R, 90S, 90T, 90U, 90V, 90W, 90X, 90Y, 90Z.
9. THE FIRE PROTECTION SYSTEM IS TO BE INSTALLED AND MAINTAINED IN ACCORDANCE WITH THE REQUIREMENTS OF THE NATIONAL FIRE PROTECTION ASSOCIATION (NFPA) 90B, 90A, 90C, 90D, 90E, 90F, 90G, 90H, 90I, 90J, 90K, 90L, 90M, 90N, 90O, 90P, 90Q, 90R, 90S, 90T, 90U, 90V, 90W, 90X, 90Y, 90Z.
10. THE FIRE PROTECTION SYSTEM IS TO BE INSTALLED AND MAINTAINED IN ACCORDANCE WITH THE REQUIREMENTS OF THE NATIONAL FIRE PROTECTION ASSOCIATION (NFPA) 90B, 90A, 90C, 90D, 90E, 90F, 90G, 90H, 90I, 90J, 90K, 90L, 90M, 90N, 90O, 90P, 90Q, 90R, 90S, 90T, 90U, 90V, 90W, 90X, 90Y, 90Z.
11. THE FIRE PROTECTION SYSTEM IS TO BE INSTALLED AND MAINTAINED IN ACCORDANCE WITH THE REQUIREMENTS OF THE NATIONAL FIRE PROTECTION ASSOCIATION (NFPA) 90B, 90A, 90C, 90D, 90E, 90F, 90G, 90H, 90I, 90J, 90K, 90L, 90M, 90N, 90O, 90P, 90Q, 90R, 90S, 90T, 90U, 90V, 90W, 90X, 90Y, 90Z.
12. THE FIRE PROTECTION SYSTEM IS TO BE INSTALLED AND MAINTAINED IN ACCORDANCE WITH THE REQUIREMENTS OF THE NATIONAL FIRE PROTECTION ASSOCIATION (NFPA) 90B, 90A, 90C, 90D, 90E, 90F, 90G, 90H, 90I, 90J, 90K, 90L, 90M, 90N, 90O, 90P, 90Q, 90R, 90S, 90T, 90U, 90V, 90W, 90X, 90Y, 90Z.
13. THE FIRE PROTECTION SYSTEM IS TO BE INSTALLED AND MAINTAINED IN ACCORDANCE WITH THE REQUIREMENTS OF THE NATIONAL FIRE PROTECTION ASSOCIATION (NFPA) 90B, 90A, 90C, 90D, 90E, 90F, 90G, 90H, 90I, 90J, 90K, 90L, 90M, 90N, 90O, 90P, 90Q, 90R, 90S, 90T, 90U, 90V, 90W, 90X, 90Y, 90Z.
14. THE FIRE PROTECTION SYSTEM IS TO BE INSTALLED AND MAINTAINED IN ACCORDANCE WITH THE REQUIREMENTS OF THE NATIONAL FIRE PROTECTION ASSOCIATION (NFPA) 90B, 90A, 90C, 90D, 90E, 90F, 90G, 90H, 90I, 90J, 90K, 90L, 90M, 90N, 90O, 90P, 90Q, 90R, 90S, 90T, 90U, 90V, 90W, 90X, 90Y, 90Z.

LEGEND

- 1. ALPHABETICAL SYMBOLS INDICATE THE FIRE AREA, THE GENERAL FIRE PROTECTION SYSTEM AND THE LOCATION OF THE FIRE PROTECTION SYSTEM COMPONENTS.
- 2. WATER CONTROL SYSTEMS PROTECTED AGAINST
- 3. 3/4" RATED FIRE DAMPER
- 4. 1/2" RATED FIRE DAMPER
- 5. AUTOMATIC SPRINKLER SYSTEM
- 6. STRUCTURAL STEEL ROOF PROTECT
- 7. AUTOMATIC SPRINKLER SYSTEM AND STRUCTURAL STEEL PROTECT
- 8. CONCRETE STRUCTURE IN COMPLIANCE WITH FIRE PROTECT REQUIREMENTS
- 9. AUTOMATIC SPRINKLER SYSTEM AND CONCRETE STRUCTURE IN COMPLIANCE WITH FIRE PROTECT REQUIREMENTS
- 10. SPRINKLER CONTROL VALVE
- 11. 2 HR FIRE RATED LOUVER
- 12. 1 HR FIRE RATED LOUVER
- 13. CLASS A TYPE FIRE DOOR
- 14. CLASS B TYPE FIRE DOOR
- 15. FIRE DETECTION IN RESTROOM - TYPE
- 16. SMOKE DETECTOR
- 17. FUSED TEMPERATURE
- 18. FUSE ELEMENTS PER TYPE
- 19. FUSE ELEMENTS PER TYPE
- 20. FUSE ELEMENTS PER TYPE
- 21. FUSE ELEMENTS PER TYPE
- 22. FUSE ELEMENTS PER TYPE
- 23. FUSE ELEMENTS PER TYPE
- 24. FUSE ELEMENTS PER TYPE
- 25. FUSE ELEMENTS PER TYPE
- 26. FUSE ELEMENTS PER TYPE
- 27. FUSE ELEMENTS PER TYPE
- 28. FUSE ELEMENTS PER TYPE
- 29. FUSE ELEMENTS PER TYPE
- 30. FUSE ELEMENTS PER TYPE
- 31. FUSE ELEMENTS PER TYPE
- 32. FUSE ELEMENTS PER TYPE
- 33. FUSE ELEMENTS PER TYPE
- 34. FUSE ELEMENTS PER TYPE
- 35. FUSE ELEMENTS PER TYPE
- 36. FUSE ELEMENTS PER TYPE
- 37. FUSE ELEMENTS PER TYPE
- 38. FUSE ELEMENTS PER TYPE
- 39. FUSE ELEMENTS PER TYPE
- 40. FUSE ELEMENTS PER TYPE
- 41. FUSE ELEMENTS PER TYPE
- 42. FUSE ELEMENTS PER TYPE
- 43. FUSE ELEMENTS PER TYPE
- 44. FUSE ELEMENTS PER TYPE
- 45. FUSE ELEMENTS PER TYPE
- 46. FUSE ELEMENTS PER TYPE
- 47. FUSE ELEMENTS PER TYPE
- 48. FUSE ELEMENTS PER TYPE
- 49. FUSE ELEMENTS PER TYPE
- 50. FUSE ELEMENTS PER TYPE
- 51. FUSE ELEMENTS PER TYPE
- 52. FUSE ELEMENTS PER TYPE
- 53. FUSE ELEMENTS PER TYPE
- 54. FUSE ELEMENTS PER TYPE
- 55. FUSE ELEMENTS PER TYPE
- 56. FUSE ELEMENTS PER TYPE
- 57. FUSE ELEMENTS PER TYPE
- 58. FUSE ELEMENTS PER TYPE
- 59. FUSE ELEMENTS PER TYPE
- 60. FUSE ELEMENTS PER TYPE
- 61. FUSE ELEMENTS PER TYPE
- 62. FUSE ELEMENTS PER TYPE
- 63. FUSE ELEMENTS PER TYPE
- 64. FUSE ELEMENTS PER TYPE
- 65. FUSE ELEMENTS PER TYPE
- 66. FUSE ELEMENTS PER TYPE
- 67. FUSE ELEMENTS PER TYPE
- 68. FUSE ELEMENTS PER TYPE
- 69. FUSE ELEMENTS PER TYPE
- 70. FUSE ELEMENTS PER TYPE
- 71. FUSE ELEMENTS PER TYPE
- 72. FUSE ELEMENTS PER TYPE
- 73. FUSE ELEMENTS PER TYPE
- 74. FUSE ELEMENTS PER TYPE
- 75. FUSE ELEMENTS PER TYPE
- 76. FUSE ELEMENTS PER TYPE
- 77. FUSE ELEMENTS PER TYPE
- 78. FUSE ELEMENTS PER TYPE
- 79. FUSE ELEMENTS PER TYPE
- 80. FUSE ELEMENTS PER TYPE
- 81. FUSE ELEMENTS PER TYPE
- 82. FUSE ELEMENTS PER TYPE
- 83. FUSE ELEMENTS PER TYPE
- 84. FUSE ELEMENTS PER TYPE
- 85. FUSE ELEMENTS PER TYPE
- 86. FUSE ELEMENTS PER TYPE
- 87. FUSE ELEMENTS PER TYPE
- 88. FUSE ELEMENTS PER TYPE
- 89. FUSE ELEMENTS PER TYPE
- 90. FUSE ELEMENTS PER TYPE
- 91. FUSE ELEMENTS PER TYPE
- 92. FUSE ELEMENTS PER TYPE
- 93. FUSE ELEMENTS PER TYPE
- 94. FUSE ELEMENTS PER TYPE
- 95. FUSE ELEMENTS PER TYPE
- 96. FUSE ELEMENTS PER TYPE
- 97. FUSE ELEMENTS PER TYPE
- 98. FUSE ELEMENTS PER TYPE
- 99. FUSE ELEMENTS PER TYPE
- 100. FUSE ELEMENTS PER TYPE

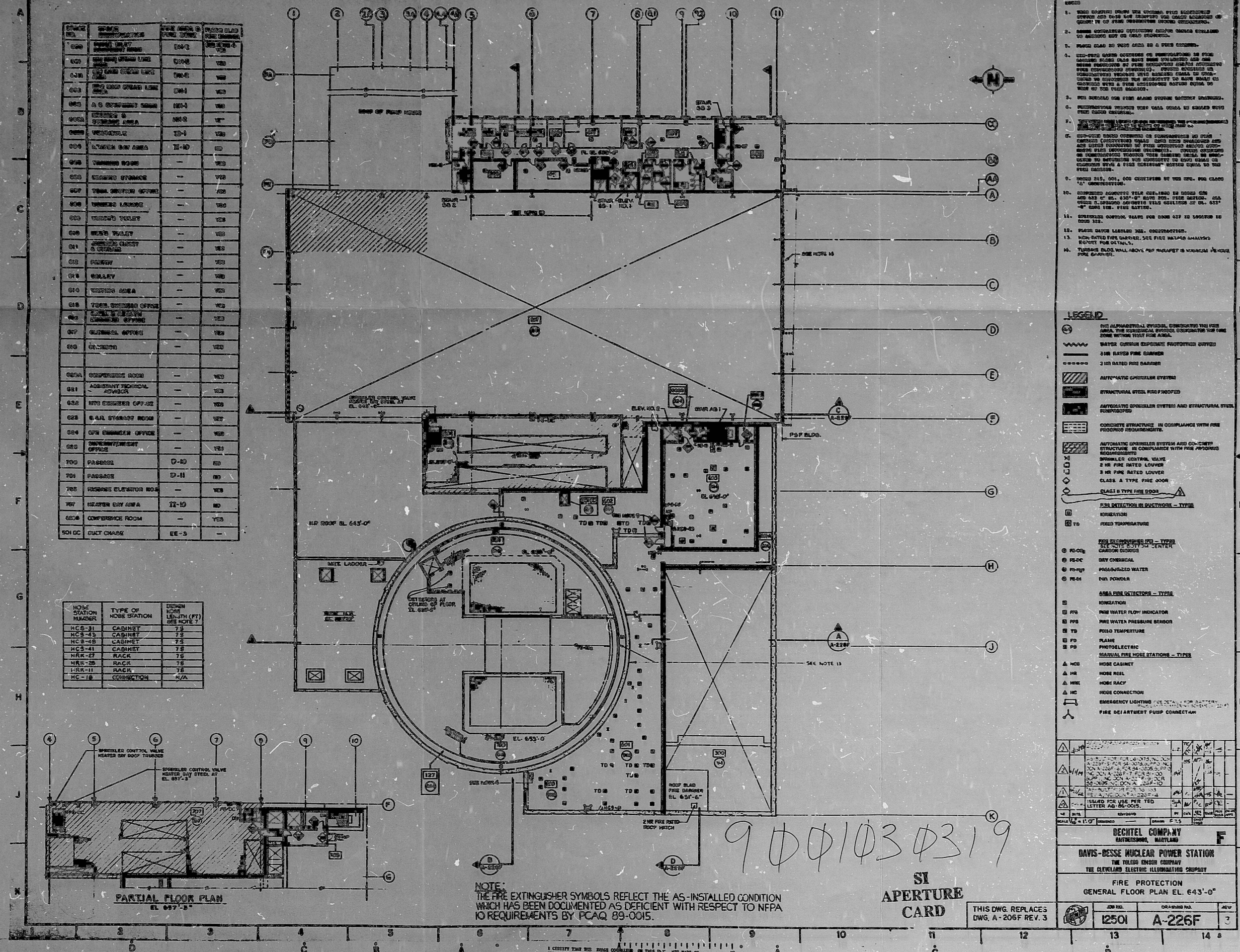
| | | | | |
|--|--------|----|---------|----------|
| NO. 100 | DATE | BY | CHECKED | APPROVED |
| 100 | | | | |
| BECHTEL COMPANY BETHESDA, MARYLAND | | | | |
| DAVIS-BESSE NUCLEAR POWER STATION THE YOUNG ENGINE COMPANY THE CLEVELAND ELECTRIC ILLUMINATING COMPANY | | | | |
| FIRE PROTECTION GENERAL FLOOR PLAN EL. 643'-0" | | | | |
| JOB NO. | DATE | BY | CHECKED | APPROVED |
| 12501 | A-226F | | | |

9001030319

NOTE:
THE FIRE EXTINGUISHER SYMBOLS REFLECT THE AS-INSTALLED CONDITION WHICH HAS BEEN DOCUMENTED AS DEFICIENT WITH RESPECT TO NFPA 10 REQUIREMENTS BY PCAQ 89-0015.

SI
APERTURE
CARD

THIS DWG. REPLACES
DWG. A-206F REV. 3



PDR RIDS

9001030319

