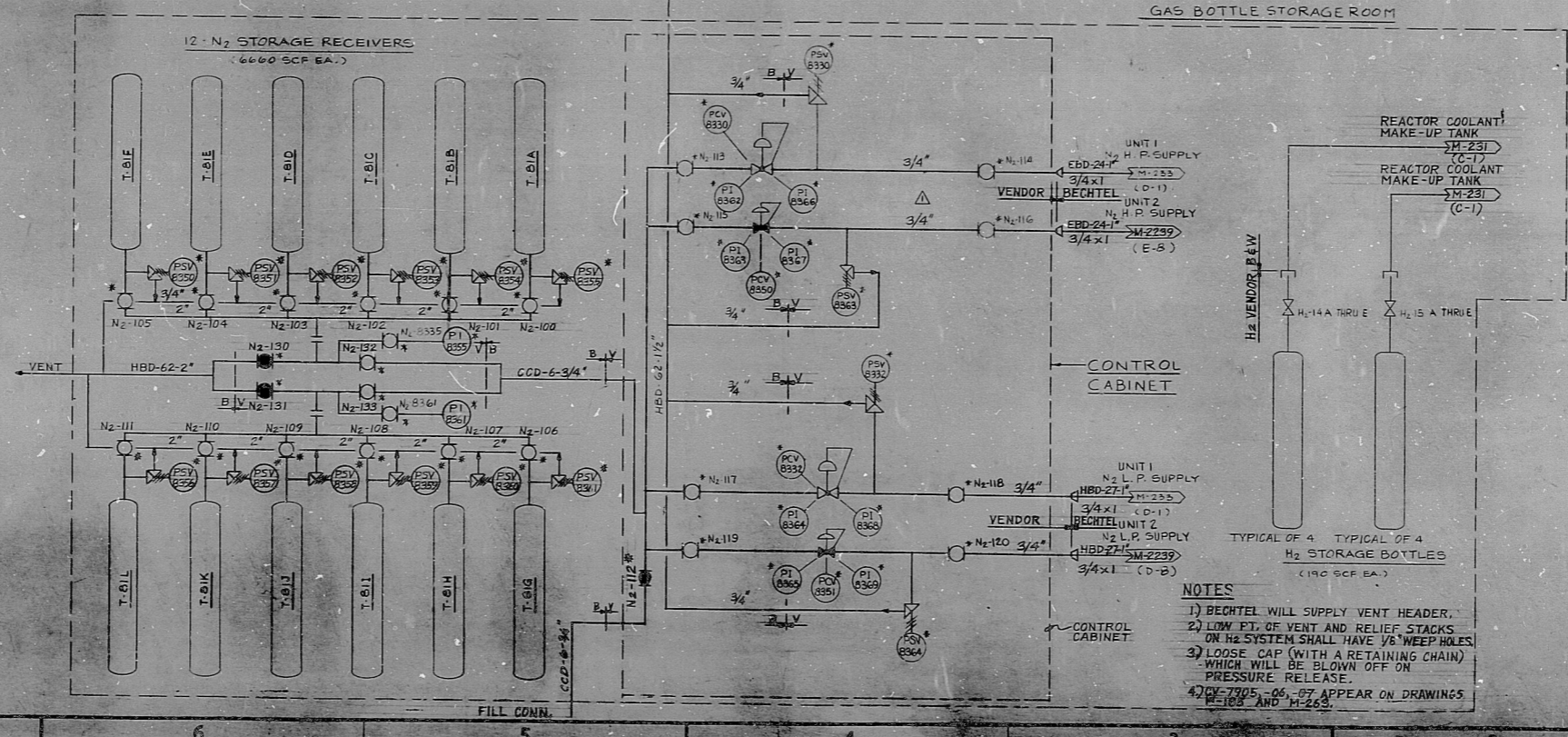
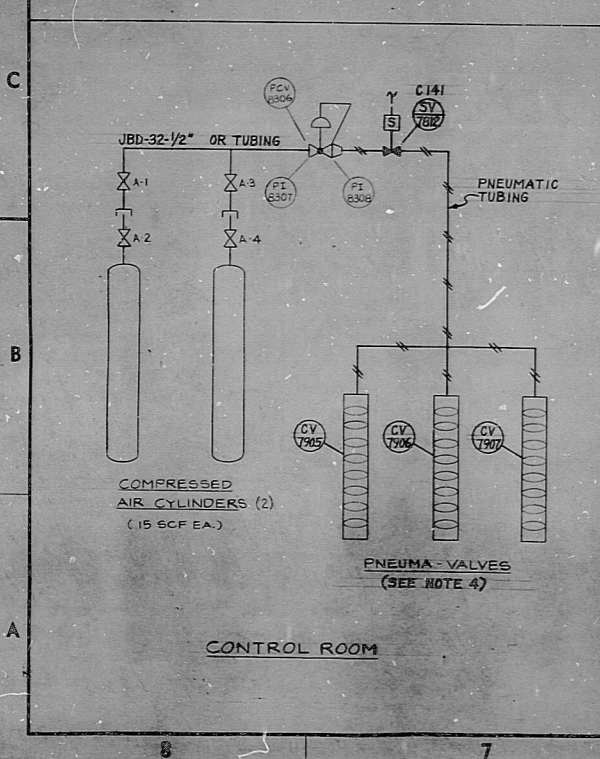
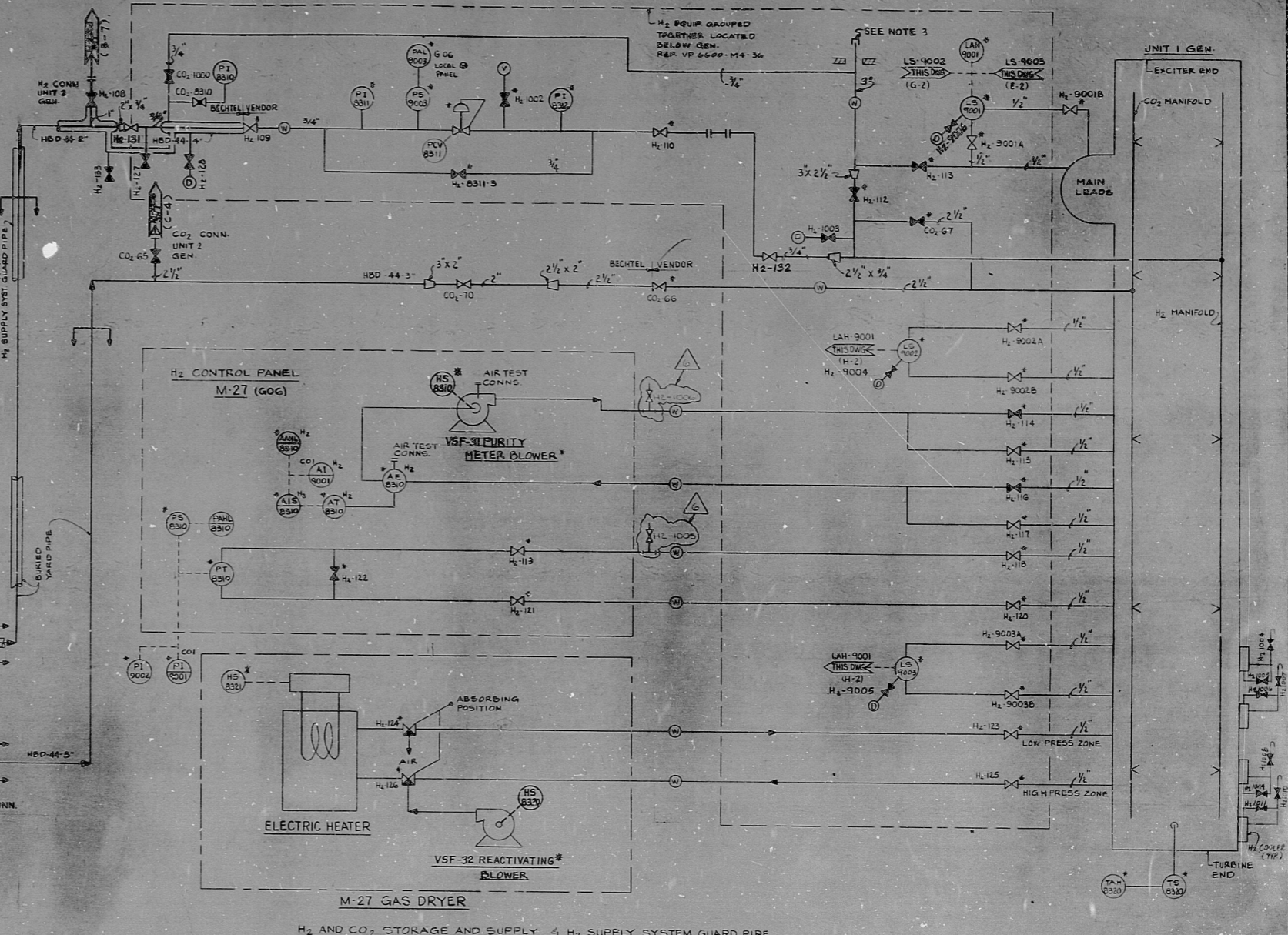
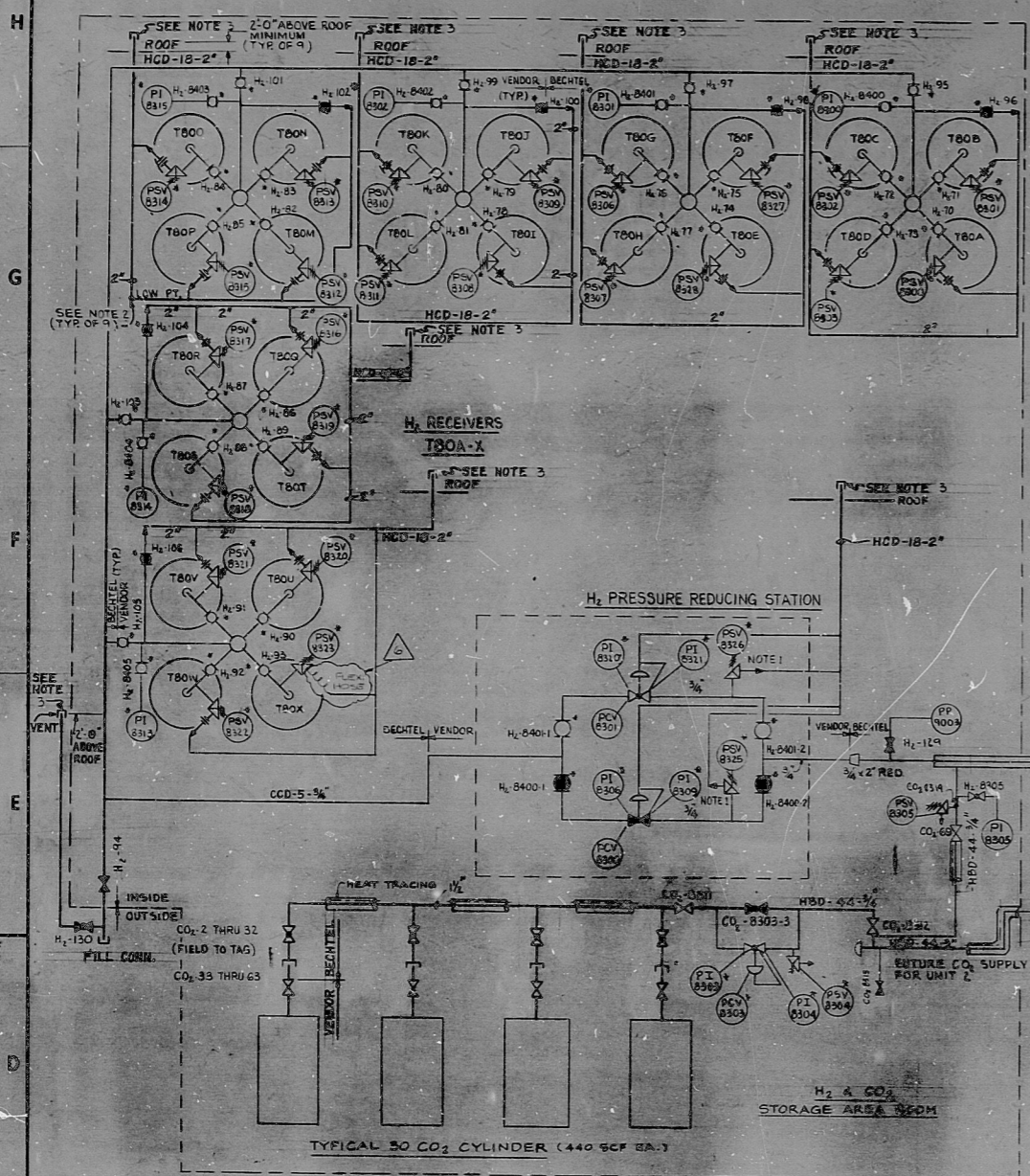


M-225



- NOTES
- 1) BECHTEL WILL SUPPLY VENT HEADER.
 - 2) LOW PT. OF VENT AND RELIEF STACKS ON H₂ SYSTEM SHALL HAVE 1/8" WEEP HOLES WHICH WILL BE BLOWN OFF ON PRESSURE RELEASE.
 - 3) LOOSE CAP (WITH A RETAINING CHAIN) WHICH WILL BE BLOWN OFF ON PRESSURE RELEASE.
 - 4) PIPING AND INSTRUMENTATION SHALL APPEAR ON DRAWINGS 6600-1 AND M-225.

PRC APERTURE CARD

NRC	
DATE	REVISIONS
NO.	BY
BECHTEL CORPORATION SAN FRANCISCO	
ARKANSAS POWER & LIGHT COMPANY ARKANSAS NUCLEAR ONE	
PIPING & INSTRUMENT DIAGRAM GAS SUPPLY SYSTEMS	
JOB NO.	DRAWING NO.
6600-1	M-225

This drawing and its design is the property of BECHTEL. They are hereby loaned and on the borrower's expense agreement that they will not be reproduced, copied, transmitted, or used in any way without the express written consent given by the holder of this document.

8.5"
11"
17"
22"
34"

RIDs

8204080564

