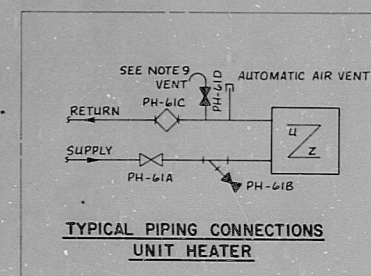
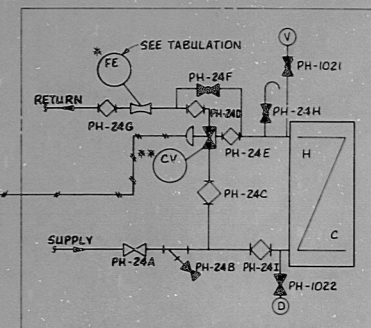


VHC	1	2	4A	4B	4C	4D	4E	4F	4G	4H	5A	5B	6	7A	7B	8	9	14	15	VHC-10/VHC-19	
CV	5803	5804	5805	5806	5807	5808	5809	5810	5811	5812	5813	5814	5815	5816	5817	5818	5819	5820	5825	5826	5827
SV	5803	5804	5805	5806	5807	5808	5809	5810	5811	5812	5813	5814	5815	5816	5817	5818	5819	5820	5825	5826	5827
FE	5803	5804	5805	5806	5807	5808	5809	5810	5811	5812	5813	5814	5815	5816	5817	5818	5819	5820	5825	5826	5827
TC	5803	5804	5805	5806	5807	5808	5809	5810	5811	5812	5813	5814	5815	5816	5817	5818	5819	5820	5825	5826	5827



- NOTES:**
- FOR GENERAL NOTES LEGEND & REFERENCE DRAWING
 - SEE DWG. M-200
 - INSTALL AIR VENTS AT HIGH POINTS IN PIPING
 - INSTALL DRAINS AT ALL LOW POINTS IN PIPING
 - SHUT OFF VALVES & BALANCING VALVE OR COCK AT UNIT HEATERS SHALL BE LINE SIZE
 - RELIEF VALVES, PRESSURE GAUGE, THERMOMETER, LOW WATER CUT-OFF, ANGLE DRAIN VALVE, BURNER CONTROLS ETC. WILL BE FURNISHED WITH BOILER TO PROVIDE A COMPLETE OPERATIONAL UNIT
 - ** INDICATES TO BE FURNISHED BY "H & V CONTROLS" SUBCONTRACTOR
 - FOR INSTRUMENT NUMBERS SEE TABLE THIS DWG.
 - ADD FIELD REVISIONS F-1 THRU F-4
 - REVISED TO REFLECT AS BUILT CONDITION
 - FOR H & V CONTROLS SEE M182, M183, M184, & M185.

PRO APERTURE CARD

NRC

NO.	DATE	REVISION	DESIGN	RECHECK	DRAWN	BY	CHK	ENGR	SUPR
1									

ARKANSAS POWER AND LIGHT COMPANY
ARKANSAS NUCLEAR ONE
UNIT 1

PIPING & INSTRUMENT DIAGRAM
PLANT HEATING & START UP BOILER

DRAWING NO. **M-220** SHT. 1 OF 2 REV. 14

8204080538

RIDS

8204080553

