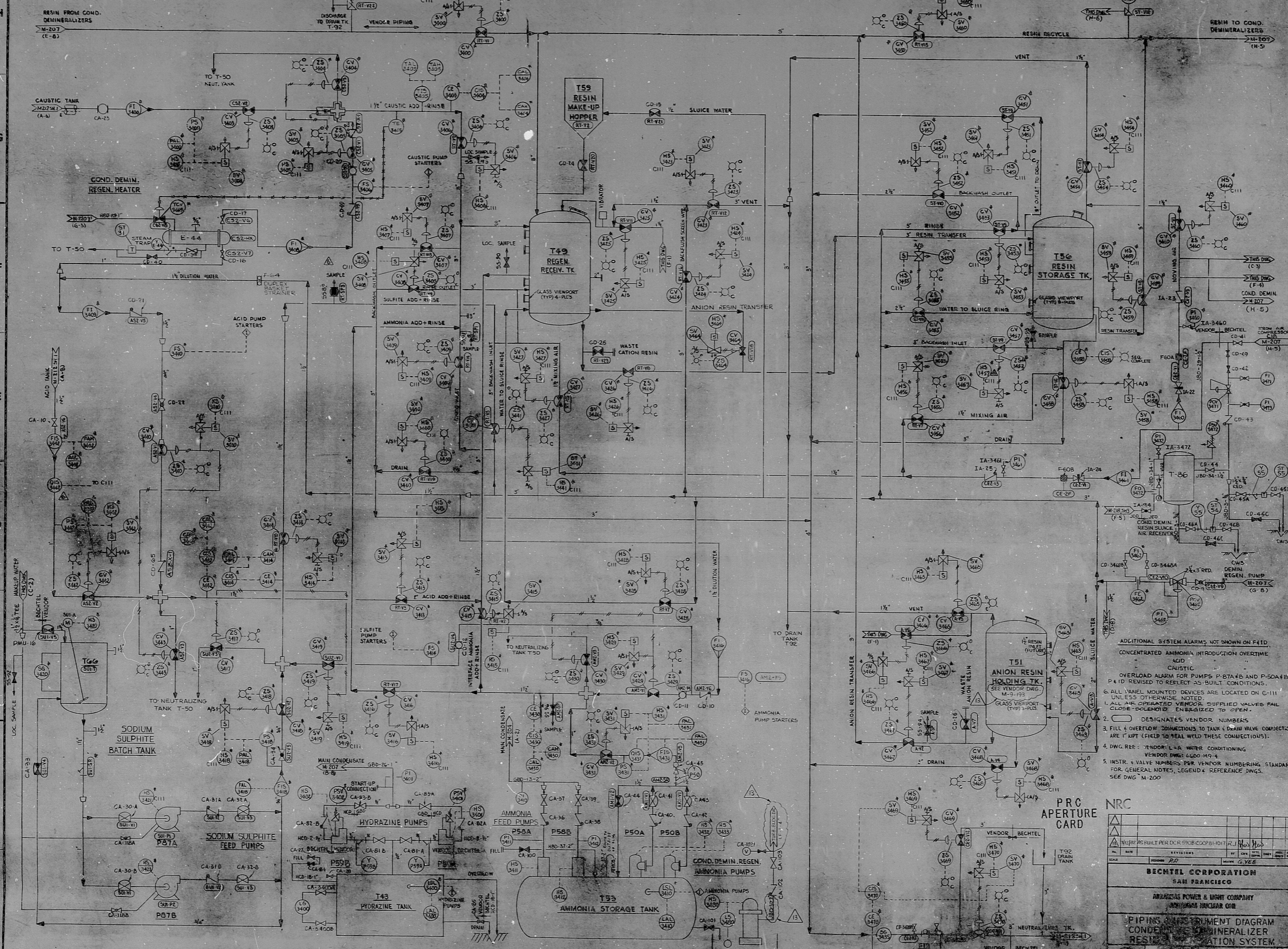


802-W



- ADDITIONAL SYSTEM ALARMS NOT SHOWN ON P&ID:
 CONCENTRATED AMMONIA INTRODUCTION OVERTIME
 ACID
 CAUSTIC
 OVERLOAD ALARM FOR PUMPS P-57A/B AND P-50A/B
 P&ID REVISED TO REFLECT AS-BUILT CONDITIONS.
1. ALL VALVE MOUNTED DEVICES ARE LOCATED ON G-1111 UNLESS OTHERWISE NOTED.
 2. ALL AIR OPERATED VENDOR SUPPLIED VALVES FAIL CLOSE UNLESS OTHERWISE INDICATED TO OPEN.
 3. DESIGNATE VENDOR NUMBERS.
 4. FILL & OVERFLOW CONNECTIONS TO TANK & DRAIN VALVE CONNECTIONS ARE 1" OPT (FIELD TO SEAL WELD THESE CONNECTIONS).
 5. DWG. REF.: VENDOR'S WATER CONDITIONING VENDOR DWG. 6600-H9-4
 6. INSTR. & VALVE NUMBERS PER VENDOR NUMBERING STANDARD FOR GENERAL NOTES, LEGEND & REFERENCE DWGS. SEE DWG. M-200.

PRC APERTURE CARD

NO.	DATE	BY	CHKD.	APP'D.	REVISION

BECHTEL CORPORATION
 SAN FRANCISCO

AMERICAN POWER & LIGHT COMPANY
 ANNUCLEAR DIVISION

PIPING INSTRUMENT DIAGRAM
 CONDENSER DEMINERALIZER
 RESIN CONDITIONING SYSTEM

17"
 22"
 22"
 22"

11"
 17"
 22"
 34"

Rids

8264080549

