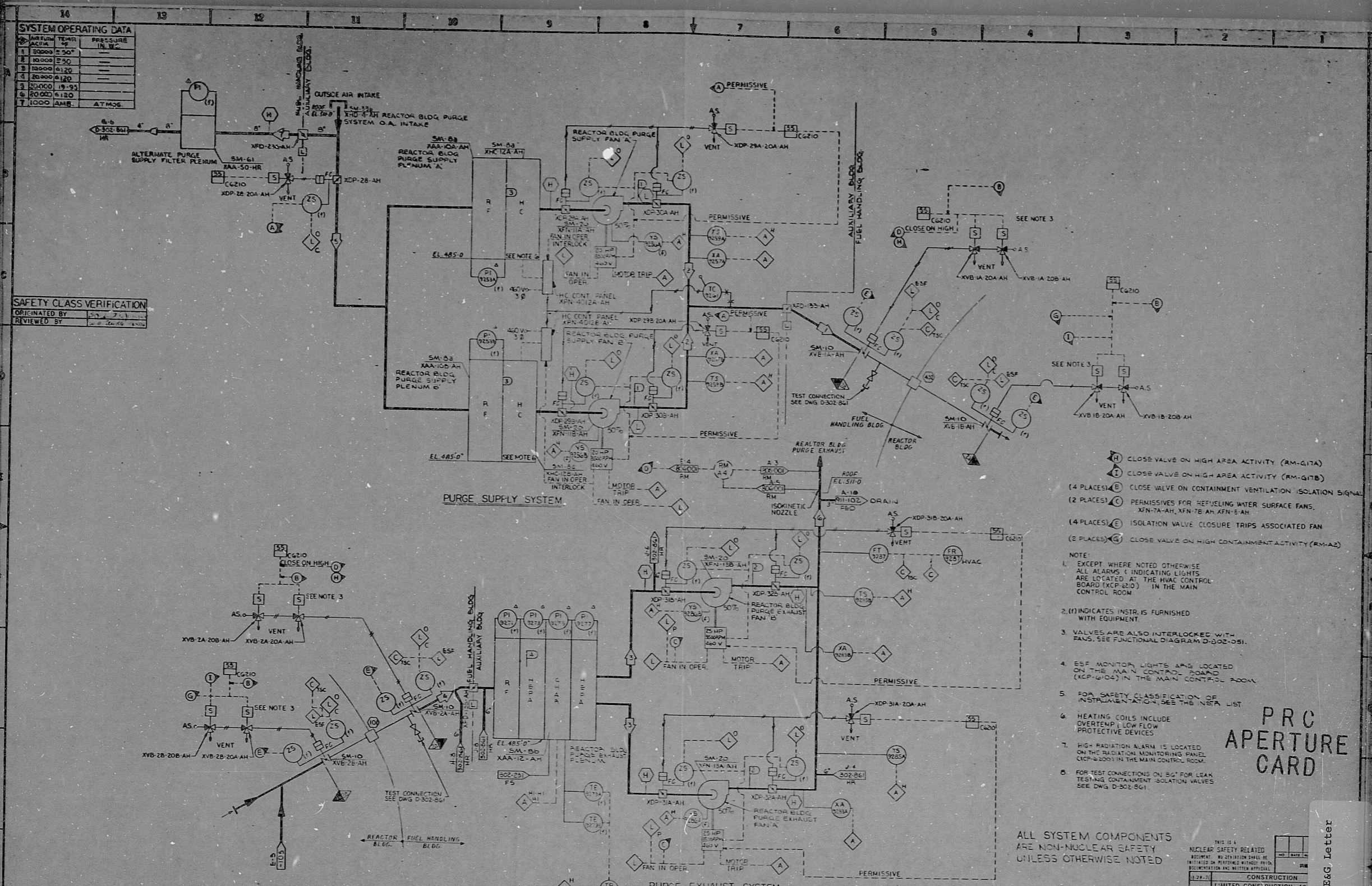


SYSTEM OPERATING DATA		
INSTR. ACFT	TEMP	PRESSURE IN. WC
1	20000	2-50"
2	10000	2-50"
3	20000	4-20"
4	20000	4-20"
5	20000	19-95"
6	20000	4-20"
7	1000	AMR. ATMOS.

SAFETY CLASS VERIFICATION
 ORIGINATED BY: [Signature]
 REVIEWED BY: [Signature]

SYSTEM DESIGN DATA		
4	21,000	
3	12,000	
2	10,000	20 MAX
1	10,000	21-95
2	AIR FLOW	AIR TEMP
3	ACFM	IN. WC



- (H) CLOSE VALVE ON HIGH AREA ACTIVITY (RM-G17A)
 - (I) CLOSE VALVE ON HIGH AREA ACTIVITY (RM-G17B)
 - (4 PLACES) (D) CLOSE VALVE ON CONTAINMENT VENTILATION ISOLATION SIGNAL
 - (2 PLACES) (C) PERMISSIVES FOR REFUELING WATER SURFACE FANS, XFN-7A-AH, XFN-7B-AH, XFN-5-AH
 - (4 PLACES) (E) ISOLATION VALVE CLOSURE TRIPS ASSOCIATED FAN
 - (2 PLACES) (G) CLOSE VALVE ON HIGH CONTAINMENT ACTIVITY (RM-A2)
- NOTE:
 1. EXCEPT WHERE NOTED OTHERWISE ALL ALARMS & INDICATING LIGHTS ARE LOCATED AT THE HVAC CONTROL BOARD (KCP-210) IN THE MAIN CONTROL ROOM.
 2. (I) INDICATES INSTR. IS FURNISHED WITH EQUIPMENT.
 3. VALVES ARE ALSO INTERLOCKED WITH FANS. SEE FUNCTIONAL DIAGRAM D-302-051.
 4. ESF MONITOR LIGHTS ARE LOCATED ON THE MAIN CONTROL BOARD (KCP-6104) IN THE MAIN CONTROL ROOM.
 5. FOR SAFETY CLASSIFICATION OF INSTALLATION SEE THE NEA LIST.
 6. HEATING COILS INCLUDE OVERTEMP/LOW FLOW PROTECTIVE DEVICES.
 7. HIGH RADIATION ALARM IS LOCATED ON THE RADIATION MONITORING PANEL (KCP-6001) IN THE MAIN CONTROL ROOM.
 8. FOR TEST CONNECTIONS ON 50% FOR LEAK TESTING CONTAINMENT ISOLATION VALVES SEE DWG D-302-861.

PRC APERTURE CARD

ALL SYSTEM COMPONENTS ARE NON-NUCLEAR SAFETY UNLESS OTHERWISE NOTED

POOR ORIGINAL 8204080509

THIS IS A NUCLEAR SAFETY RELATED INSTRUMENT. IT IS NOT TO BE RELEASED OR REPRODUCED WITHOUT THE APPROVAL OF THE PROJECT MANAGER.	
11-74-7	CONSTRUCTION
11-74-7	LIMITED CONSTRUCTION: AS BIDDING PURPOSES
11-74-7	FOR CLIP IT APPLIES
DATE	RELEASED FOR
SOUTH CAROLINA ELECTRIC & GAS	
WSPGIL C. SUMNER NUCLEAR STATION	
BUILDING SERVICE SYSTEM	
PURGE SUPPLY SYSTEM	
PURGE EXHAUST SYSTEM	
PROJECT MANAGER: [Signature]	
PROJECT ENGINEER: [Signature]	
DESIGNER: [Signature]	
CHECKER: [Signature]	
DATE: 3/30/82	
ATTACHMENT TO SOFEG LETTER TO NRC DATED 3/30/82	
04	4461 D-912-103 13

NO.	REVISIONS	DATE	BY	CHKD.
1	AS BUILT			
2				
3				
4				
5				
6				
7				
8				
9				
10				
11				
12				
13				
14				
15				
16				
17				
18				
19				
20				
21				
22				
23				
24				
25				
26				
27				
28				
29				
30				
31				
32				
33				
34				
35				
36				
37				
38				
39				
40				
41				
42				
43				
44				
45				
46				
47				
48				
49				
50				

KIDS

8204080509

