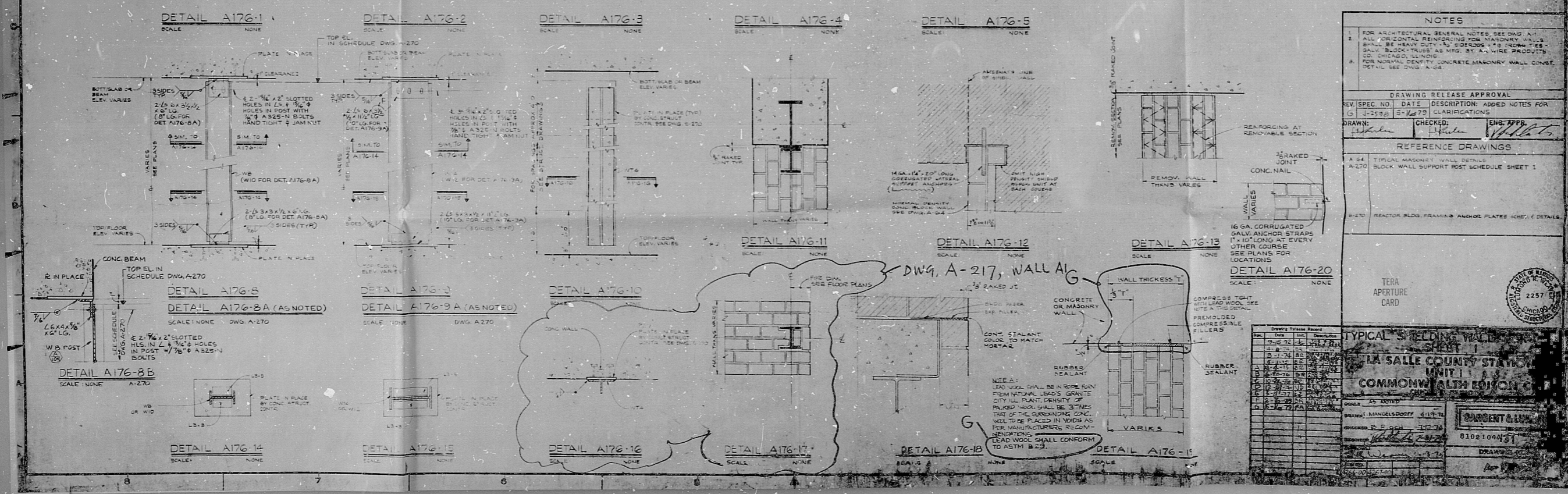
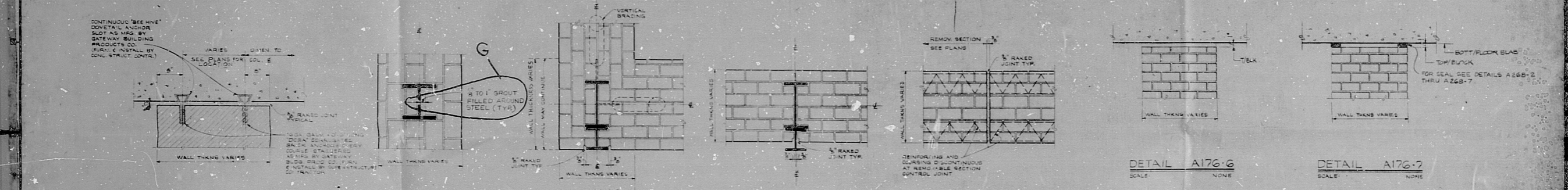


TYPICAL CONSTRUCTION FOR CONCRETE MASONRY SHIELD WALLS



NOTES

- FOR ARCHITECTURAL GENERAL NOTES, SEE DWG. A-176-1.
- ALL HORIZONTAL REINFORCING FOR MASONRY WALLS SHALL BE HEAVY DUTY 1/2" DIAMETER #3 BARS. ALL VERTICAL REINFORCING SHALL BE HEAVY DUTY 1/2" DIAMETER #3 BARS. ALL REINFORCING SHALL BE PLACED IN Voids AS PER MANUFACTURER'S RECOMMENDATIONS. LEAD WOOL SHALL CONFORM TO ASTM B-33.
- FOR NORMAL DENSITY CONCRETE MASONRY WALL CONSTRUCTION, DETAIL SEE DWG. A-176-1.

DRAWING RELEASE APPROVAL

| REV. | SPEC. NO. | DATE | DESCRIPTION | ADDED NOTES FOR CLARIFICATIONS |
|------|-----------|---------|-------------|--------------------------------|
| 0 | J-1528 | 5-14-78 | | |

DRAWN: [Signature] CHECKED: [Signature] ENG. APPROV: [Signature]

REFERENCE DRAWINGS

| | |
|-------|--|
| A-24 | TYPICAL MASONRY WALL DETAILS |
| A-270 | BLOCK WALL SUPPORT POST SCHEDULE SHEET 1 |
| B-170 | REACTOR BLDG. FRAMING ANCHOR PLATES SCHEDULE SHEET 1 |

TERA APERTURE CARD

DWG. A-217, WALL A176

MA SALLE COUNTY STATE UNIT COMMONWEALTH OF ILLINOIS

2257

8108-100015

BIDS-PDR

8102100431

