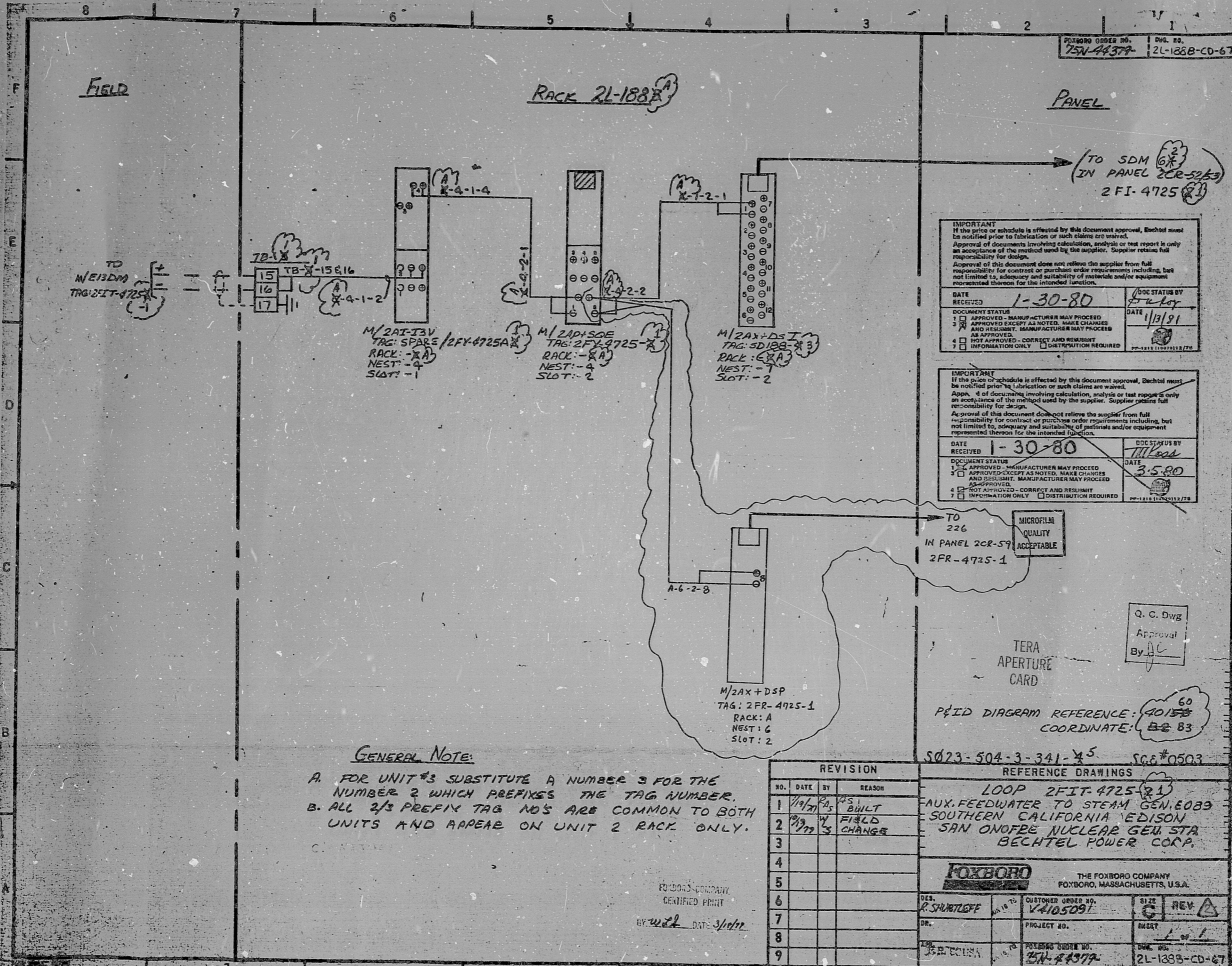


FOXBORO ORDER NO. 75N-4437A DWG. NO. 2L-1888-CD-67



IMPORTANT
If the price or schedule is affected by this document approval, Bechtel must be notified prior to fabrication or such claims are waived.
Approval of documents involving calculation, analysis or test report is only an acceptance of the method used by the supplier. Supplier retains full responsibility for design.
Approval of this document does not relieve the supplier from full responsibility for contract or purchase order requirements including, but not limited to, adequacy and suitability of materials and/or equipment represented thereon for the intended function.

DATE RECEIVED 1-30-80 DOC STATUS BY [Signature] DATE 1/13/81

1 APPROVED - MANUFACTURER MAY PROCEED
2 APPROVED EXCEPT AS NOTED. MAKE CHANGES AND RESUBMIT. MANUFACTURER MAY PROCEED AS APPROVED.
3 NOT APPROVED - CORRECT AND RESUBMIT
4 INFORMATION ONLY DISTRIBUTION REQUIRED

IMPORTANT
If the price or schedule is affected by this document approval, Bechtel must be notified prior to fabrication or such claims are waived.
Approval of documents involving calculation, analysis or test report is only an acceptance of the method used by the supplier. Supplier retains full responsibility for design.
Approval of this document does not relieve the supplier from full responsibility for contract or purchase order requirements including, but not limited to, adequacy and suitability of materials and/or equipment represented thereon for the intended function.

DATE RECEIVED 1-30-80 DOC STATUS BY [Signature] DATE 3-5-80

1 APPROVED - MANUFACTURER MAY PROCEED
2 APPROVED EXCEPT AS NOTED. MAKE CHANGES AND RESUBMIT. MANUFACTURER MAY PROCEED AS APPROVED.
3 NOT APPROVED - CORRECT AND RESUBMIT
4 INFORMATION ONLY DISTRIBUTION REQUIRED

TO 226
IN PANEL 2CR-59
2FR-4725-1

MICROFILM QUALITY ACCEPTABLE

Q. C. Dwg
Approval
By [Signature]

TERA APERTURE CARD

PEID DIAGRAM REFERENCE: 40156
COORDINATE: B2 B3

S023-504-3-341-45 SCG #0503

GENERAL NOTE:
A. FOR UNIT #3 SUBSTITUTE A NUMBER 3 FOR THE NUMBER 2 WHICH PREFIXES THE TAG NUMBER.
B. ALL 2/3 PREFIX TAG NOS ARE COMMON TO BOTH UNITS AND APPEAR ON UNIT 2 RACK ONLY.

REVISION				REFERENCE DRAWINGS	
NO.	DATE	BY	REASON		
1	1/17/75	AS1	BUILT	LOOP 2FIT-4725-21	
2	1/17/75	W	FIELD CHANGE	AUX. FEEDWATER TO STEAM GEN. E089	
3				SOUTHERN CALIFORNIA EDISON	
4				SAN ONOFE NUCLEAR GEN. STA	
5				BECHTEL POWER CORP.	
6				FOXBORO	
7				DES. R. SHURTLEFF	CUSTOMER ORDER NO. V4105091
8				DR.	PROJECT NO.
9				DR.	DATE 1-1-81

THE FOXBORO COMPANY
FOXBORO, MASSACHUSETTS, U.S.A.

DES. R. SHURTLEFF
DR.
DATE 3/1/81

CUSTOMER ORDER NO. V4105091
PROJECT NO.
DATE 1-1-81

FOXBORO ORDER NO. 75N-4437A
DWG. NO. 2L-1888-CD-67

FOXBORO COMPANY
CERTIFIED PRINT
BY [Signature] DATE 3/1/81

RDS

8102040639

