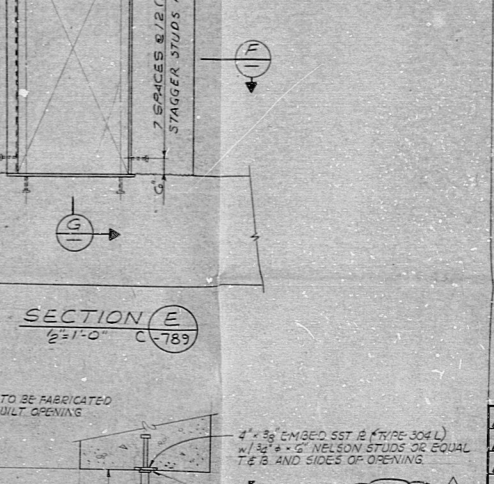
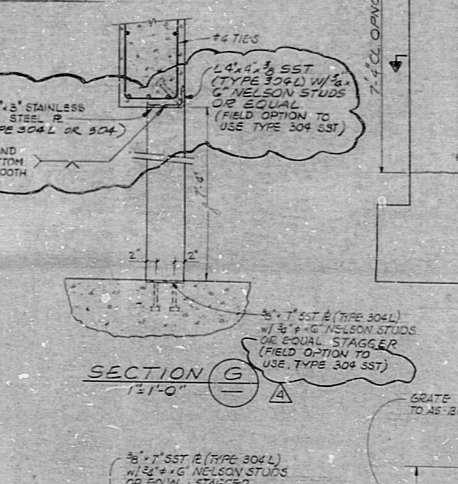
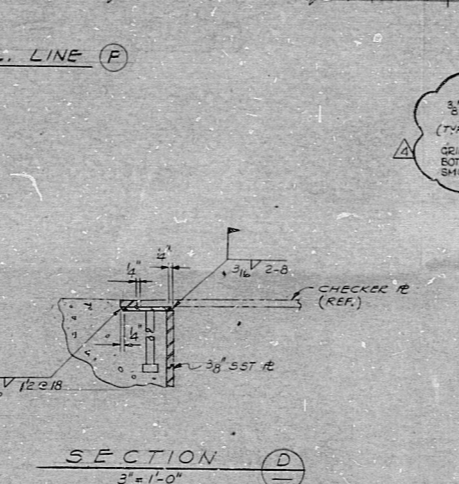
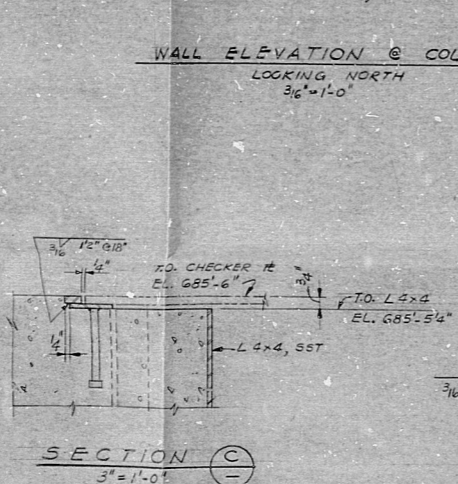
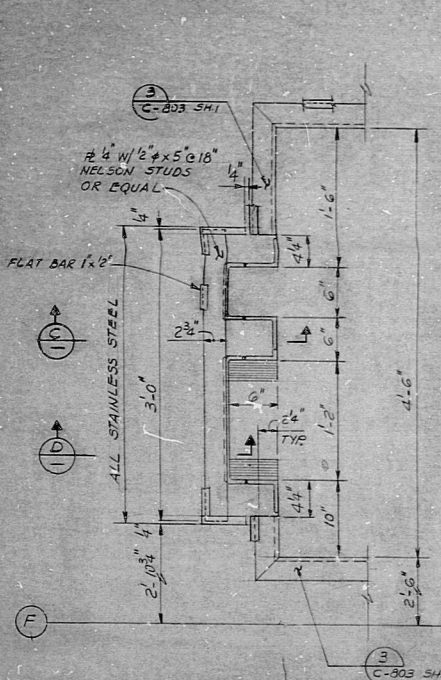
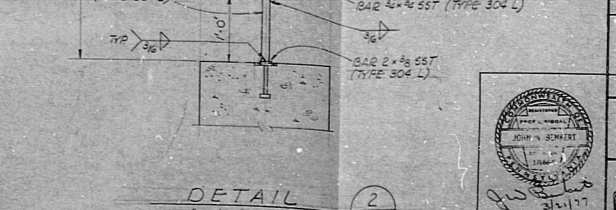
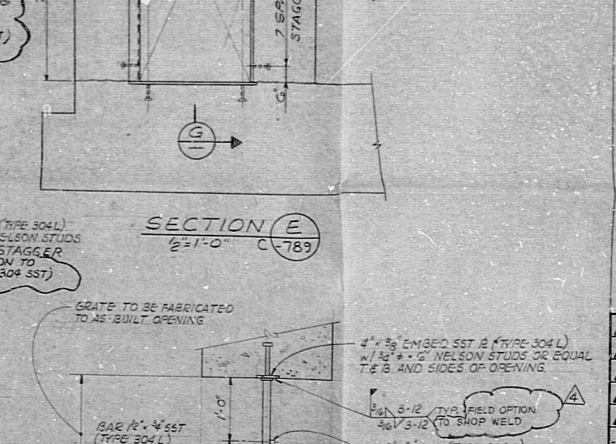
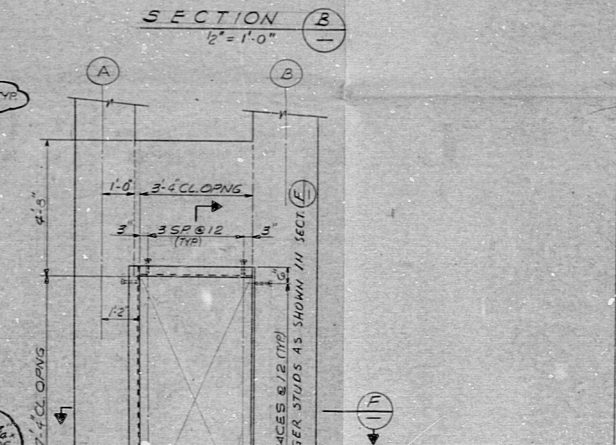
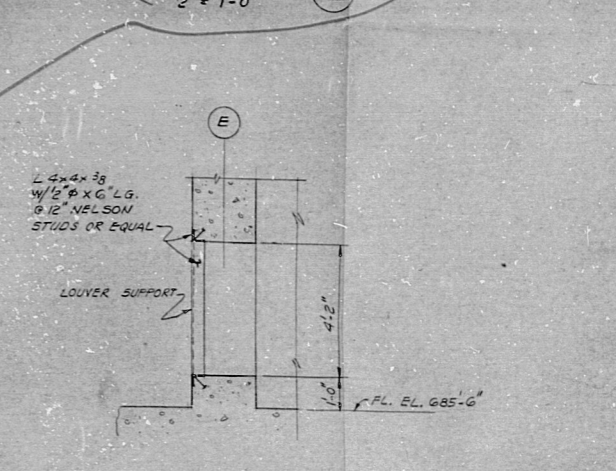
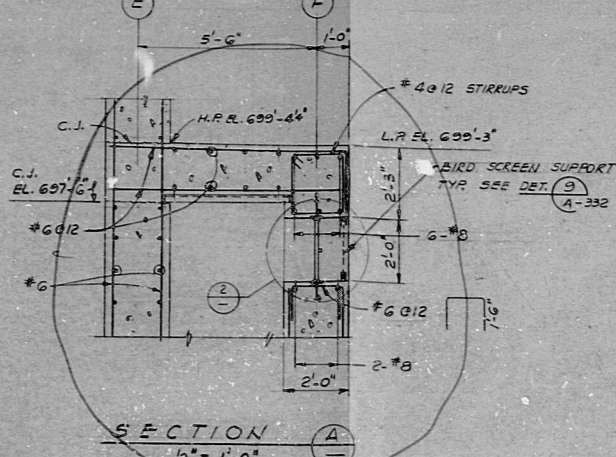
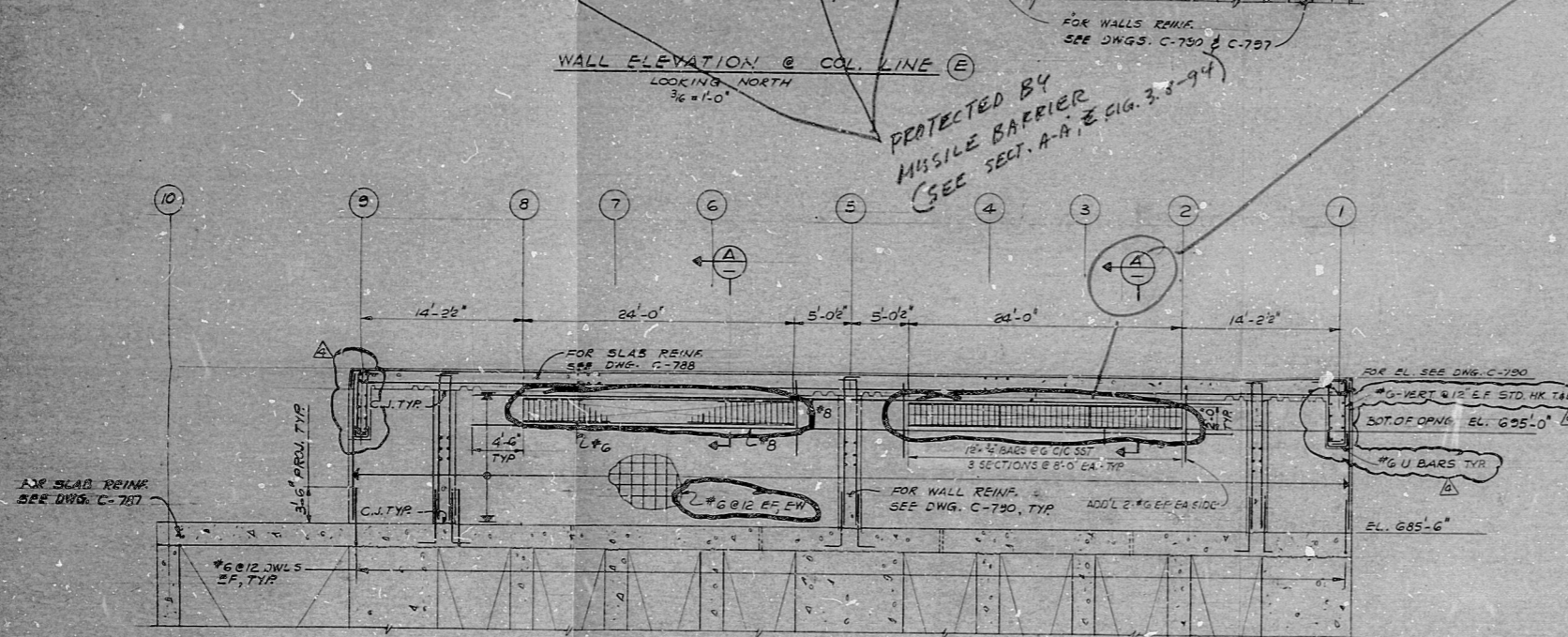
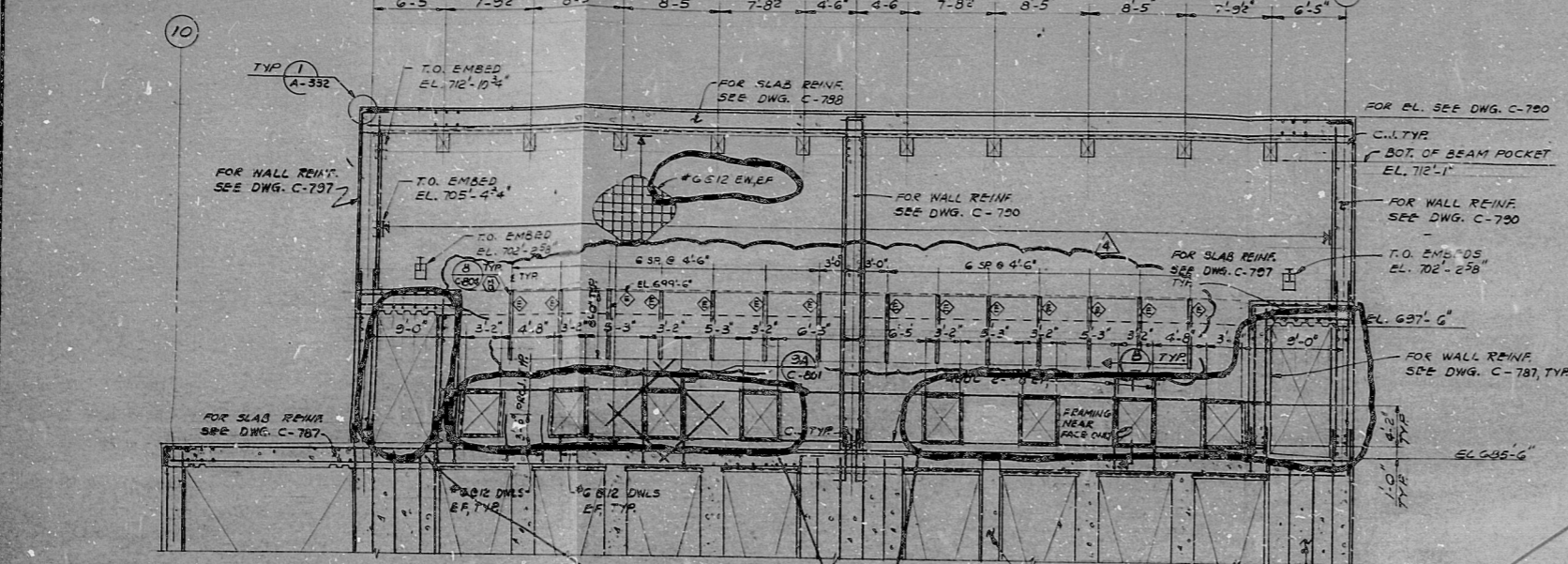


8856-C-798

SIZE E



- NOTES:**
- FOR NOTES AND REFERENCE DRAWINGS SEE DWG. C-791.
 - FOR REINFORCING DETAILS & NOTES SEE DWG. C-801 SH.182
 - FOR LOCATION & TYPE OF EMBEDS SEE DRAWINGS C-792 & C-793.
 - ALL EMBEDS TO BE STRUCTURAL STEEL A36 UNLESS NOTED OTHERWISE. ALL STAINLESS STEEL (SST) EMBEDS TO BE TYPE 316 L UNLESS NOTED OTHERWISE. ALL STRUCTURAL STEEL & STAINLESS STEEL TO BE IN ACCORDANCE WITH SPECIFICATION AISC 158 AND TO BE CLASS 1 (Q LISTED). STAINLESS STEEL EMBEDS MUST NOT BE IN CONTACT WITH THE REBARS.

REFERENCE DWGS.

DECTEL NO.	PL. NO.
C-787	E-105586
C-788	A-105587
C-790	E-105587
C-791	E-105588
C-792	E-105594
C-793	E-105590-1
C-801	E-105592-3
C-802	E-105593-1
A-352	E-105593-2
C-792	E-105589
C-793	E-105590
C-804	E-105591-2

NO.	DESCRIPTION	DATE	BY	CHECKED
1	ISSUED FOR CONSTRUCTION	11/17/57
2

PENNSYLVANIA POWER & LIGHT COMPANY
 ALLENTOWN, PENNSYLVANIA
 BUCKSHANNA STEAM ELECTRIC STATION - UNIT 1 UNIT 2

BECHTEL - SAN FRANCISCO

ESS.W. PUMPHOUSE WALL ELEVATIONS

JOB NO. 8856 DRAWING NO. C-798 REV. 4

E-105595
 8012.80697

The drawing and the design it covers are the property of BECHTEL. They are hereby loaned to the customer for use in connection with the project for which they are prepared. No part of this drawing or design may be reproduced or transmitted in any form or by any means, electronic, mechanical, photocopying, recording, or by any information storage and retrieval system, without the prior written permission of BECHTEL.

RDS — PDR

8012180659

