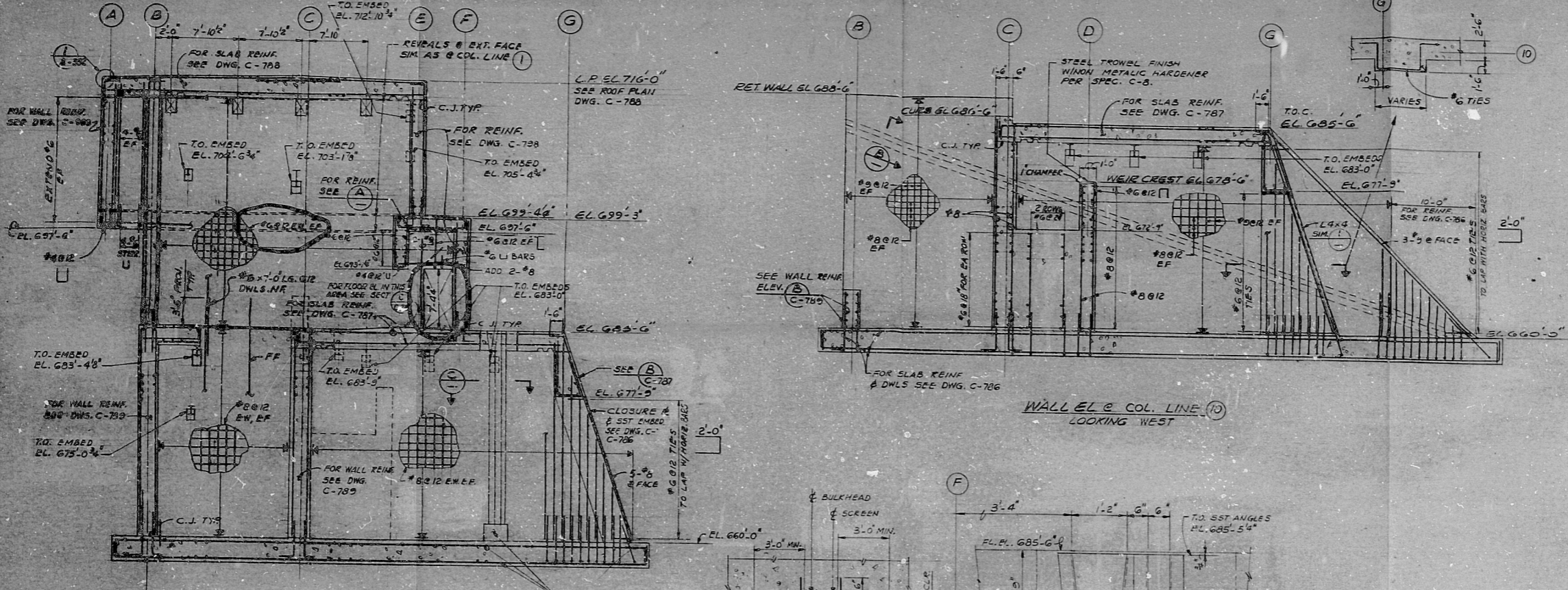
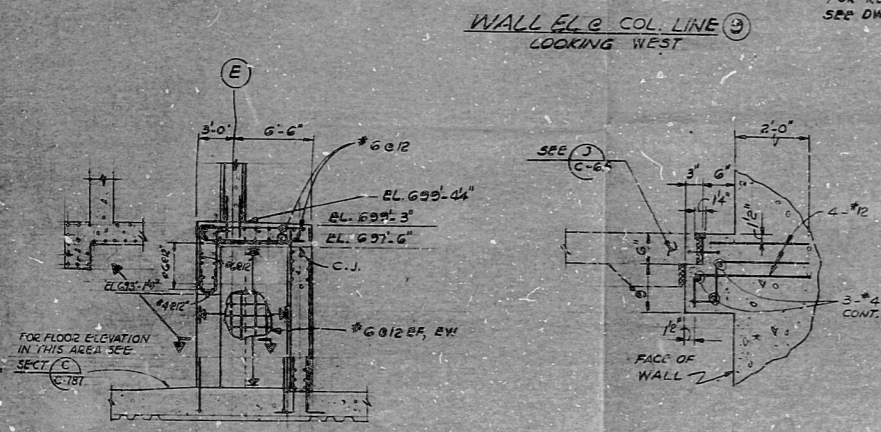


162-1-9988

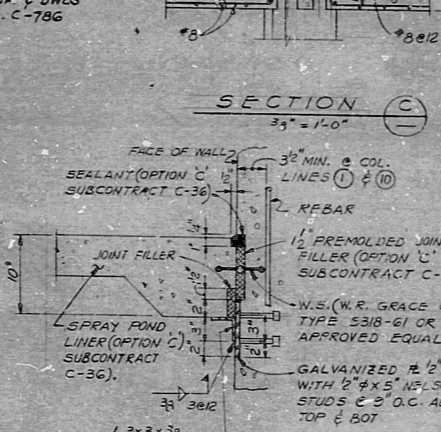
SIZE E



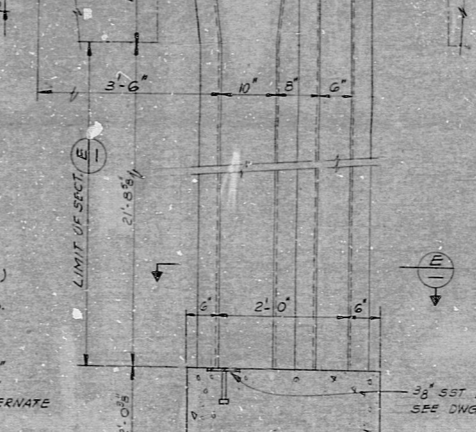
- NOTES:**
1. FOR REFERENCE DRAWINGS AND NOTES SEE DWG. C-701.
 2. FOR REINFORCING DETAILS & NOTES SEE DWGS. C-801 SH. 1 & 2.
 3. FOR LOCATIONS & TYPE OF EMBEDS SEE DRAWINGS C-792 & C-793.
 4. ALL EMBEDS TO BE STRUCTURAL STEEL A 36 UNLESS NOTED OTHERWISE. ALL STAINLESS STEEL (SST) EMBEDS TO BE TYPE 316 L. ALL STAINLESS STEEL WHICH WILL NOT BE WELDED MAY BE TYPE 316 IN LIEU OF TYPE 316 L. ALL STRUCTURAL STEEL & STAINLESS STEEL EMBEDS TO BE IN ACCORDANCE WITH SPECIFICATION 8856-C-16 AND TO BE CLASS 1 (Q LISTED). STAINLESS STEEL EMBEDS MUST NOT BE IN CONTACT WITH THE REBARS.
 5. ALL EXPANSION BOLTS ARE TO BE IN ACCORDANCE WITH SPECIFICATION 8856-C-72.



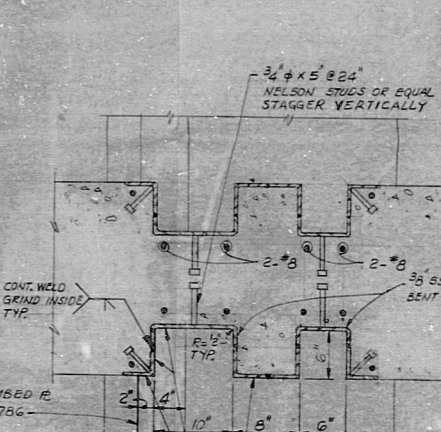
SECTION A
3/8" = 1'-0"



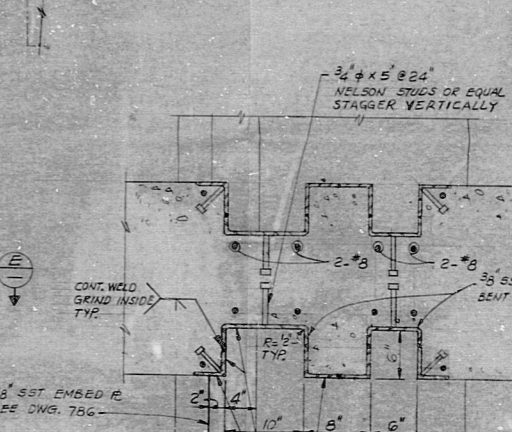
SECTION B
1" = 1'-0"



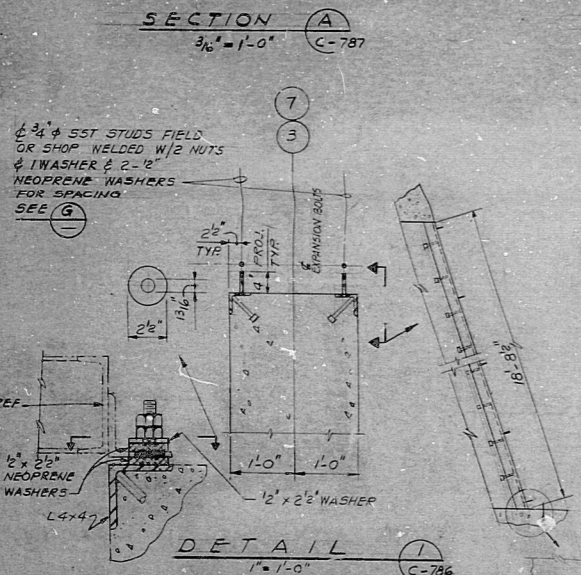
SECTION C
3/8" = 1'-0"



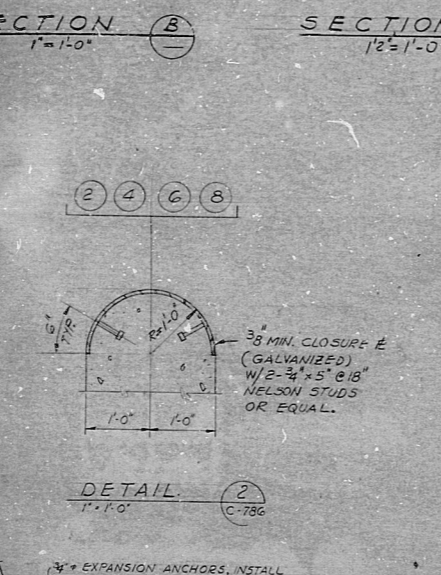
SECTION D
1" = 1'-0"



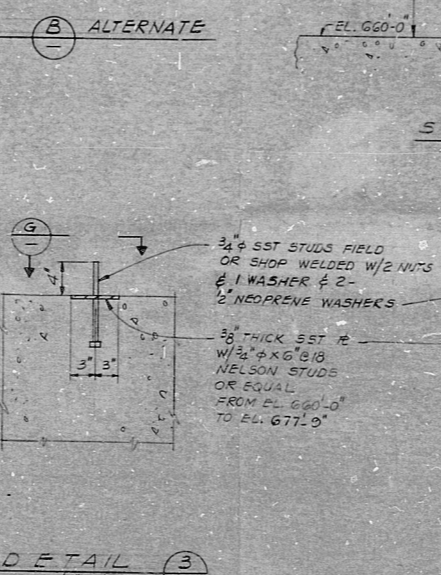
SECTION E
1" = 1'-0"



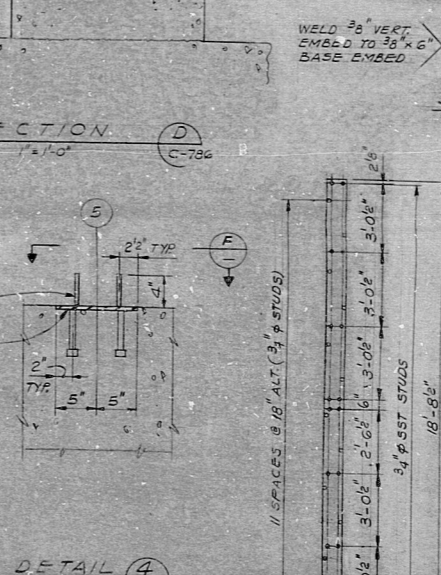
DETAIL 1
1" = 1'-0"



DETAIL 2
1" = 1'-0"



DETAIL 3
1" = 1'-0"



DETAIL 4
1" = 1'-0"

BECHTEL NO.	PL. NO.
C-786	E-105583
C-787	E-105584
C-788	E-105585
C-789	E-105586
C-791	E-105588
C-794	E-105595
C-801 SH. 1	E-105598-1
C-801 SH. 2	E-105598-2
A-332	E-105599-2
C-790	E-105587
C-792	E-105589
C-793	E-105590

TERRA APERTURE CARD

NO.	DATE	REVISION	BY	CHECKED
1				
2				
3				
4				
5				
6				
7				
8				
9				
10				

PENNSYLVANIA POWER & LIGHT COMPANY
 ALLENTOWN, PENNSYLVANIA
 BUCKINGHAM STEAM ELECTRIC STATION - UNIT 1, UNIT 2
 BECHTEL - SAN FRANCISCO
ESSW PUMPHOUSE
 WALL ELEVATIONS
 JOB NO. 8856 DRAWING NO. C-797 REV. 5
 E-105594
 6013180/89

RIPS - PIR

8012180653

