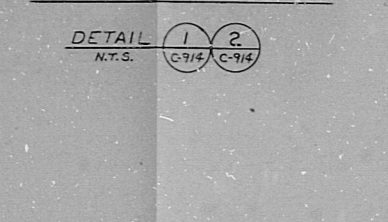
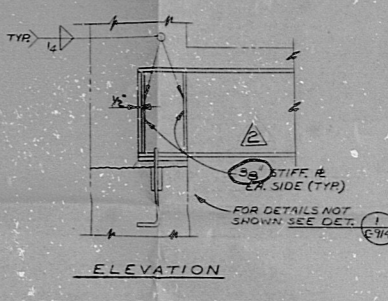
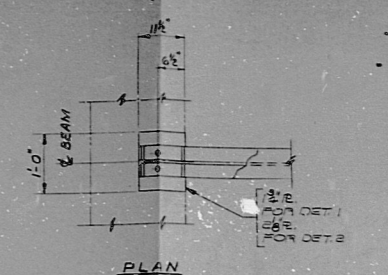
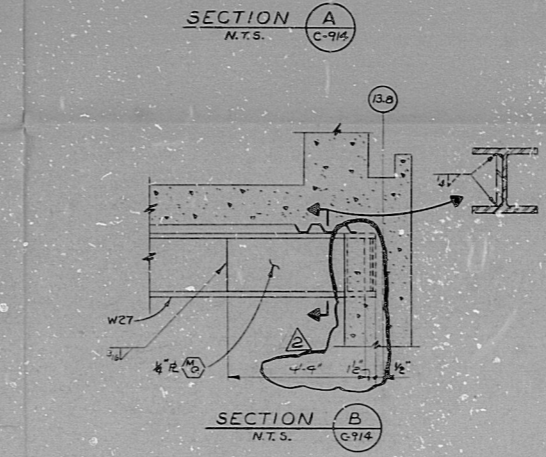
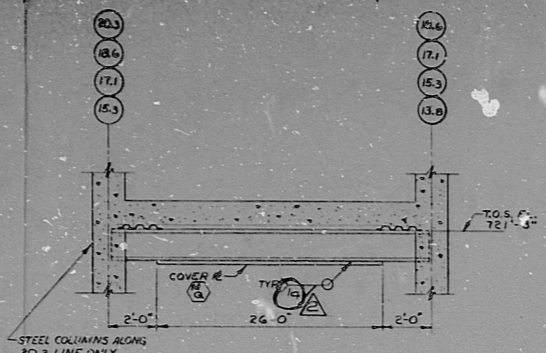
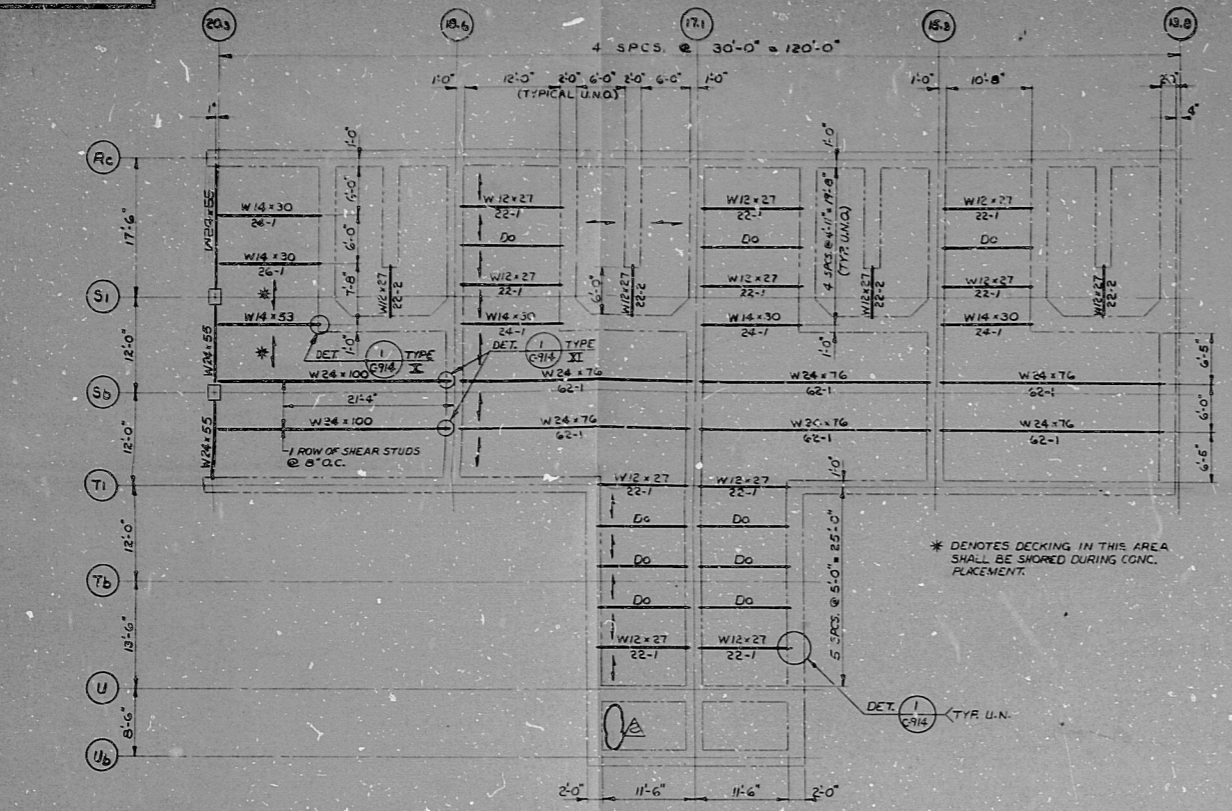


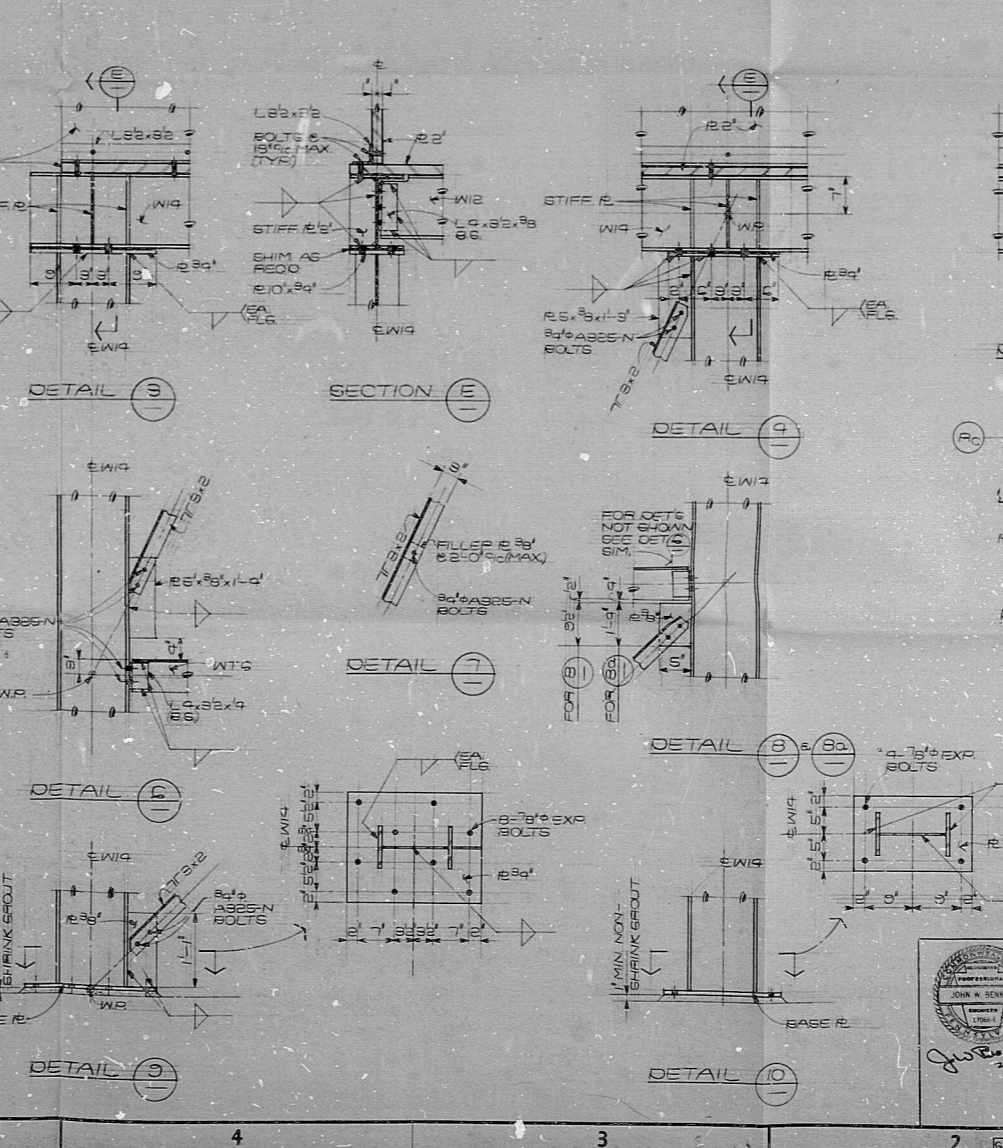
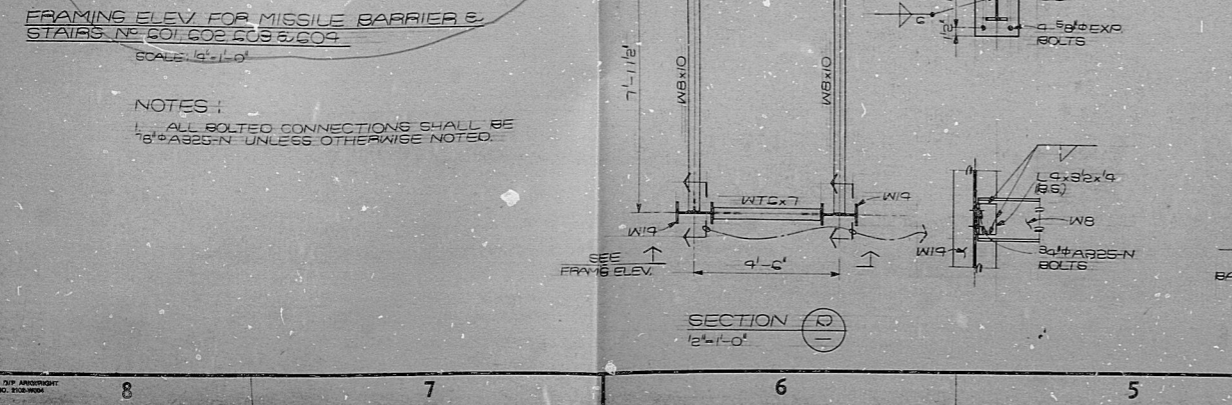
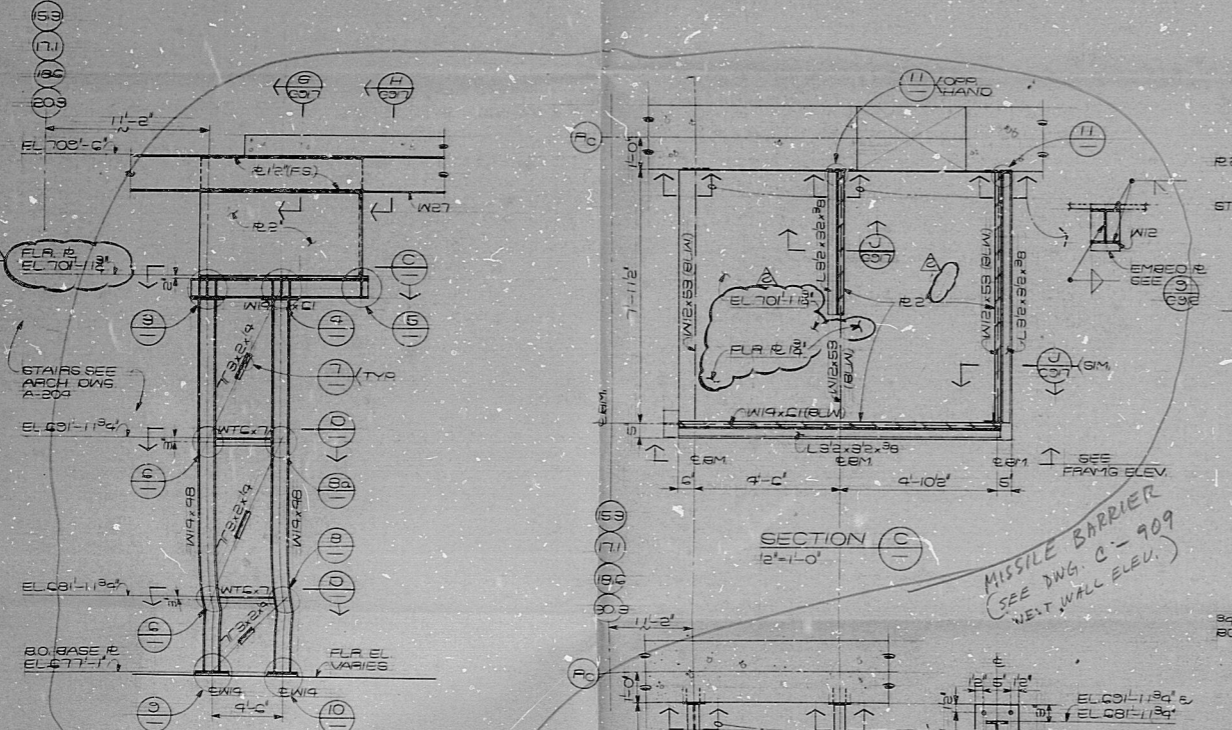
E15-C-9988



- NOTES:
1. THIS IS A CLASS I STRUCTURE. FURNISHING, DETAILING, FABRICATING AND DELIVERING OF STRUCTURAL STEEL SHALL BE GOVERNED BY SPEC. 8856-C-11 AND SHALL BE USED UNO.
 2. FOR ADDITIONAL NOTES SEE DWG. C-914
 3. ALL STRUCTURAL STEEL SHOWN ON THIS DWG SHALL BE ASTM. A36 UNO.

REFERENCE DWG'S.

BECHTEL NO.	PL. NO.
C-912	E-105680
C-914	E-105691
C-917	E-105699
A-204	E-105689



NO.	DATE	REVISIONS	BY	CHECKED
1				
2				
3				
4				
5				
6				
7				
8				
9				
10				
11				

SCALE: 1/4" = 1'-0"

DESIGNED: J. TANSU
 DRAWING MANAGER: [Signature]

PENNSYLVANIA POWER & LIGHT COMPANY
 ALLENTOWN, PENNSYLVANIA
 SUDBORGHAMA STEAM ELECTRIC STATION - UNIT 1, UNIT 2

BECHTEL - SAN FRANCISCO
 DIESEL GENERATOR BUILDING
 STRUCTURAL STEEL
 FRAMING PLAN AND DETAILS

JOB NO. 8856
 DRAWING NO. C-913
 REV. 2

E 105690
 8012180677

RTDS — PDR

8012180649

