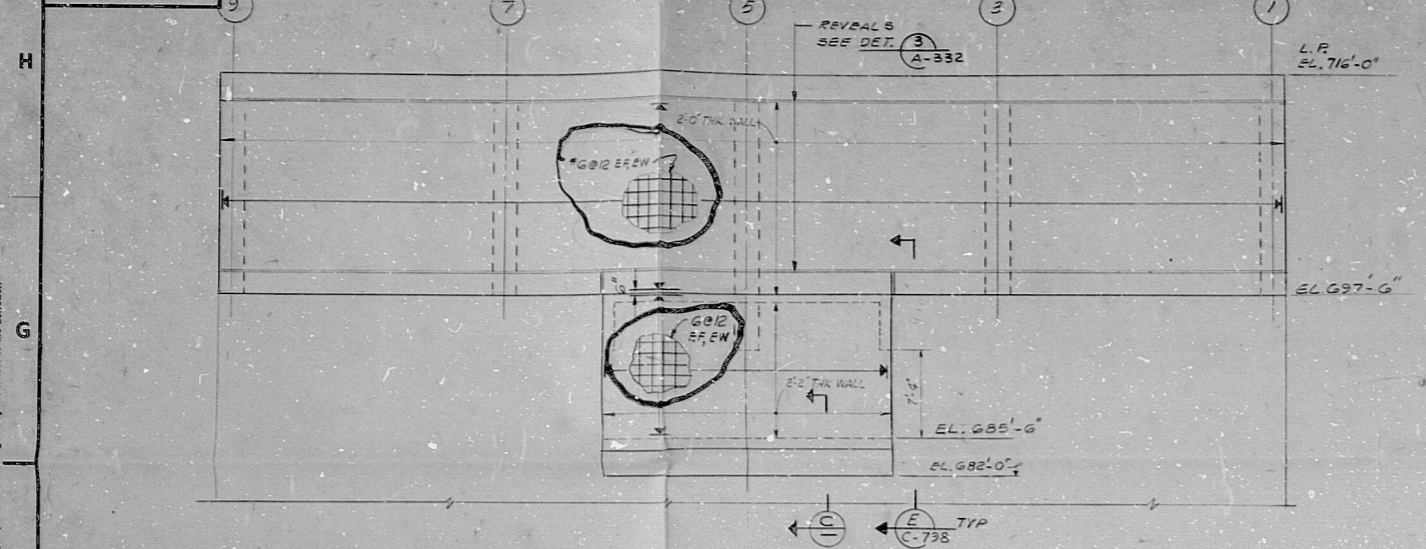
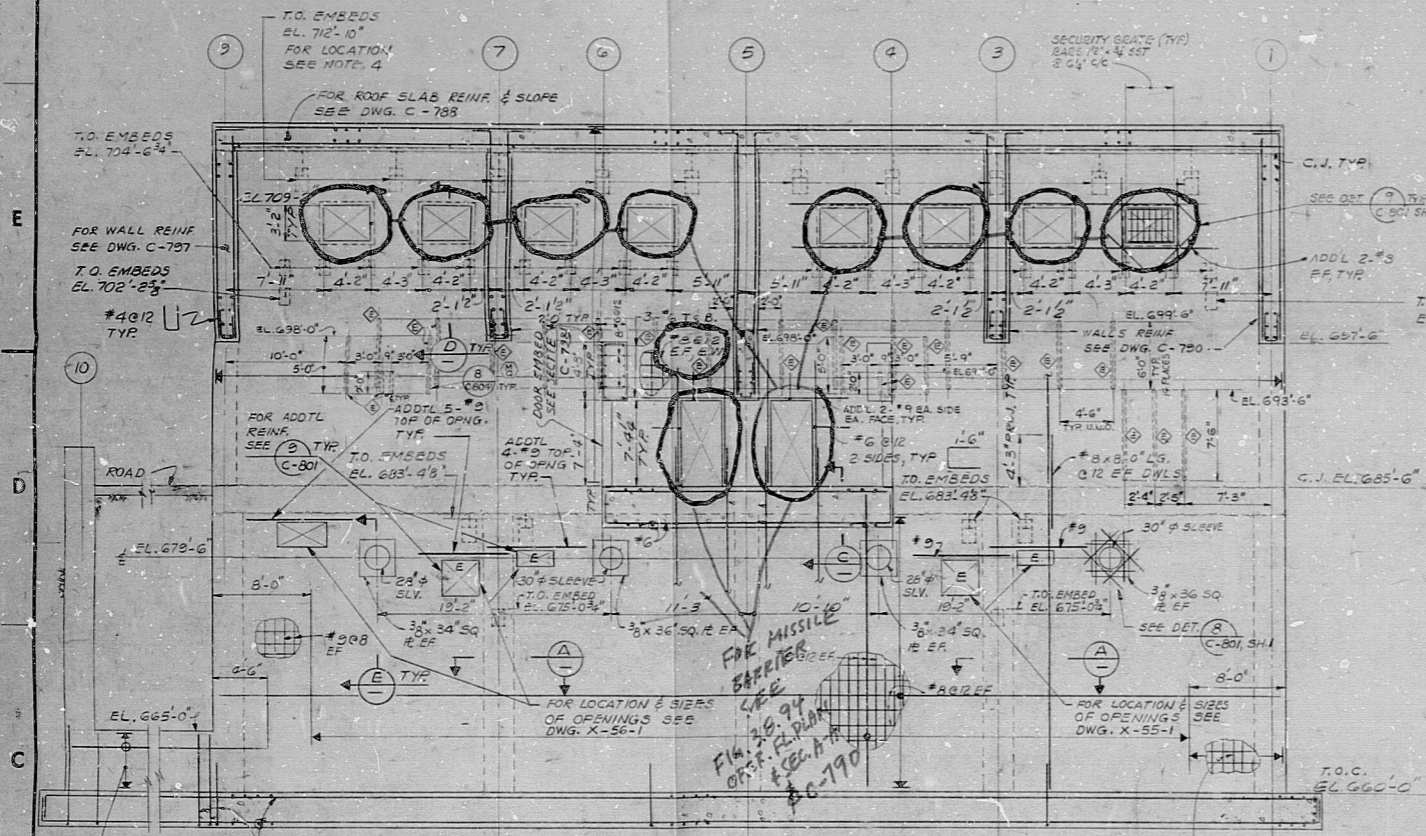


IHS 682-C-9588

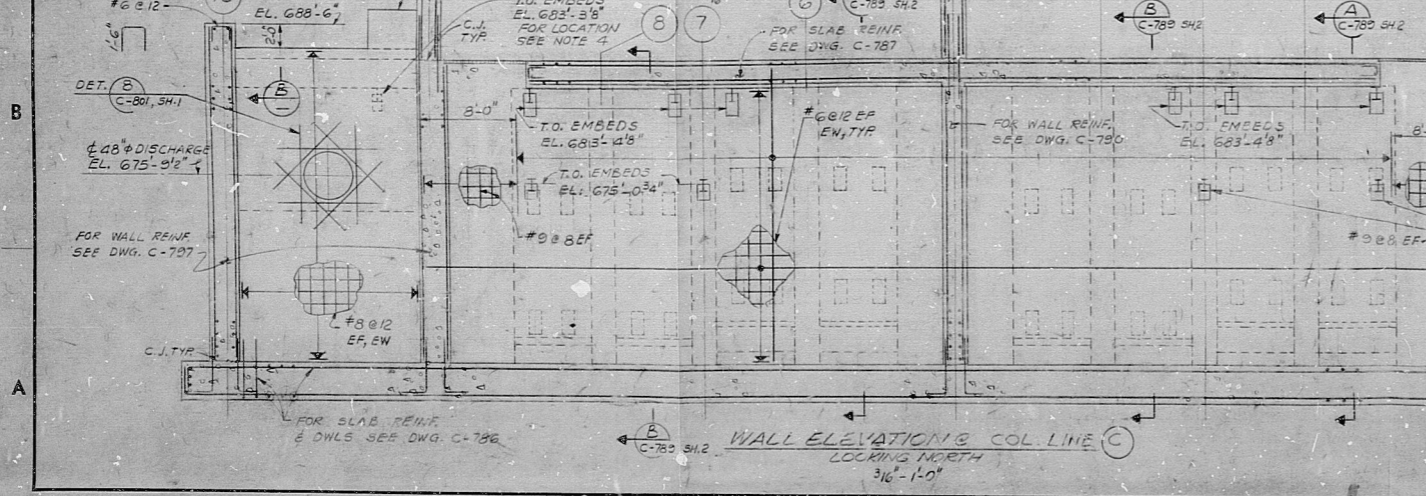
SIZE E



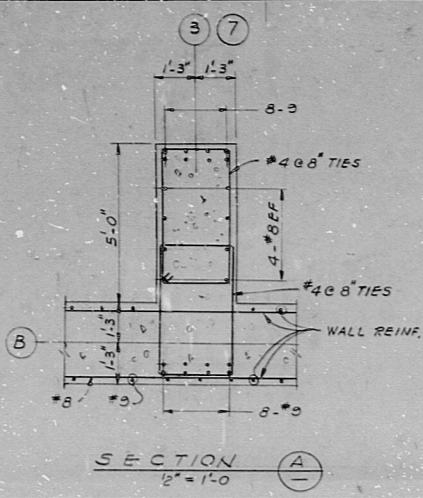
WALL ELEVATION G COL. LINE A  
LOOKING NORTH  
3/4" = 1'-0"



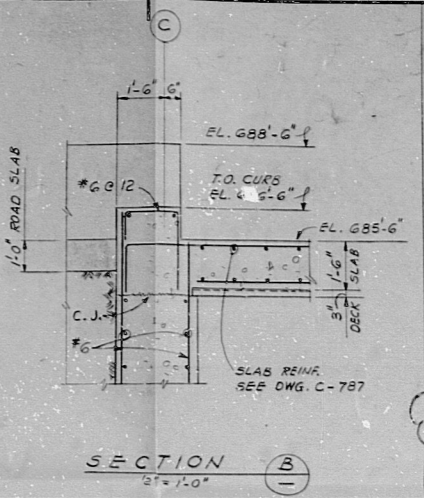
WALL ELEVATION B COL. LINE B  
LOOKING NORTH  
3/4" = 1'-0"



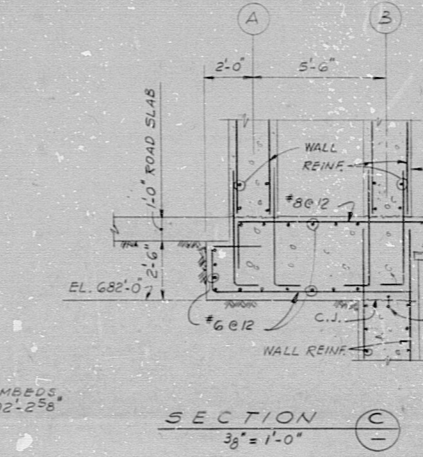
WALL ELEVATION C COL. LINE C  
LOOKING NORTH  
3/4" = 1'-0"



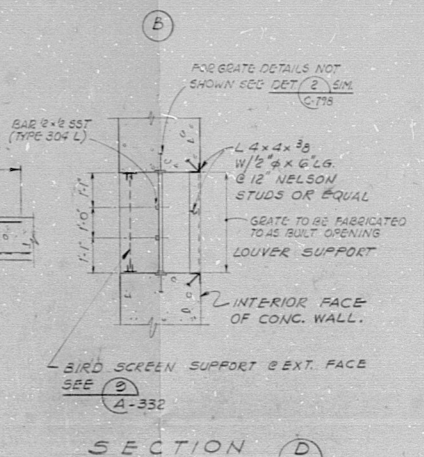
SECTION A  
1/2" = 1'-0"



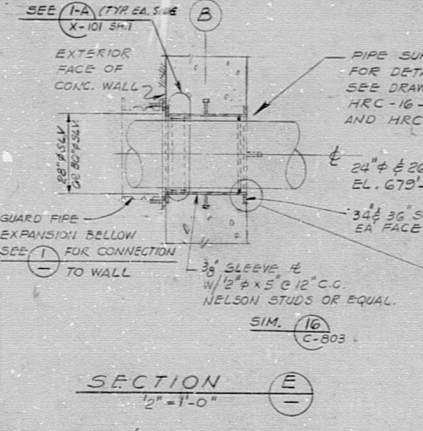
SECTION B  
2/3" = 1'-0"



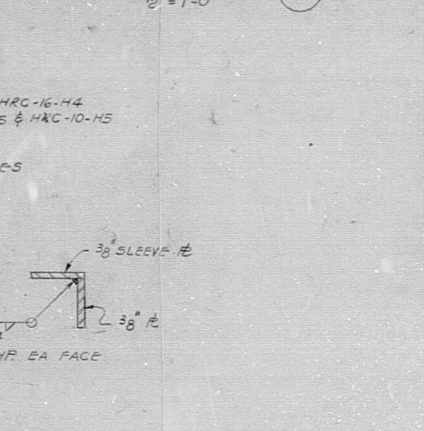
SECTION C  
3/8" = 1'-0"



SECTION D  
1/2" = 1'-0"



SECTION E  
1/2" = 1'-0"



SECTION F  
3/4" = 1'-0"

DETAIL I  
3/4" = 1'-0"

- NOTES:**
- FOR NOTES & REFERENCE DRAWINGS SEE DWG. C-791.
  - FOR REINFORCING DETAILS & NOTES SEE DWG. C-801 SH.1 & 2.
  - SEE A-331 & A-332 FOR EXTERIOR WALL REVEAL AND CONC. FINISH.
  - FOR LOCATIONS & TYPE OF EMBEDS SEE DRAWINGS C-792 & C-793.
  - ALL EMBEDS TO BE STRUCTURAL STEEL A36 UNLESS NOTED OTHERWISE. ALL STAINLESS STEEL (SST) EMBEDS TO BE TYPE 316 L UNLESS NOTED OTHERWISE. ALL STRUCTURAL STEEL & STAINLESS STEEL TO BE IN ACCORDANCE WITH SPECIFICATION 8886-C-16 AND TO BE CLASS 1 (Q LISTED). STAINLESS STEEL EMBEDS MUST NOT BE IN CONTACT WITH THE REBARS.
  - THE 1/2" EXPANSION ANCHORS SHALL BE TIGHTENED TO THE TORQUE REQUIREMENT 1/2" BOLT AS PER SPEC C-72.

REFERENCE DWG'S.		REFERENCE DWG'S.	
BECHTEL NO.	PL. NO.	BECHTEL NO.	PL. NO.
A-331	E-05085-1	C-792	E-05553
A-332	E-05085-2	C-797	E-05554
S-792	E-05550	C-788	E-05555
C-793	E-05550	C-790	E-05557
X-101 SH.1	E-06322-1	C-791	E-05558
HRC-5-H5	E-06322-1	C-797	E-05554
HRC-10-H5	E-06322-1	C-801 SH.2	E-05559
HRC-16-H5	E-06322-1	C-803	E-05560
X-55-1	E-06322-1		
X-56-1	E-06322-1		
C-795	E-05555		
C-790 SH.2	E-05556		

TERA APERTURE CARD

NO.	DATE	REVISION	BY	CHKD.	APP'D.
1		ISSUED FOR DESIGN			
2		INCORPORATED			
3		FOR C-788			
4		FOR C-790			
5		FOR C-791			
6		FOR C-797			
7		FOR C-801 SH.2			
8		FOR C-803			

**PENNSYLVANIA POWER & LIGHT COMPANY**  
 ALLENTOWN, PENNSYLVANIA  
 SUBURGHANNA STEAM ELECTRIC STATION - UNIT 1, UNIT 2

BECHTEL - SAN FRANCISCO

**ESSW PUMPHOUSE WALL ELEVATIONS**

JOB NO.	DRAWING NO.	REV.
8856	C-789 SH.1	9

E-105556 SH.1

This drawing and the design it covers are the property of BECHTEL. They are hereby loaned and on the borrower's express agreement that they will not be reproduced, copied, loaned, or used except in the manner and under the terms set forth in the loan agreement.

77  
71  
58  
8.5  
11  
17  
22  
34

77  
71  
58  
8.5  
11  
17  
22  
34

RDS - PDR

8012180628

