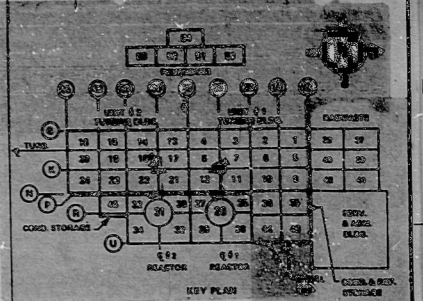
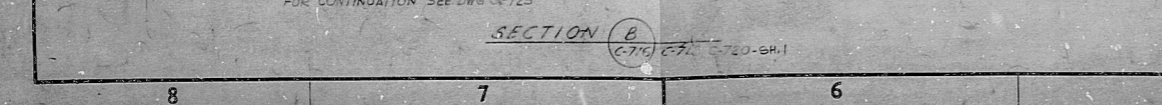
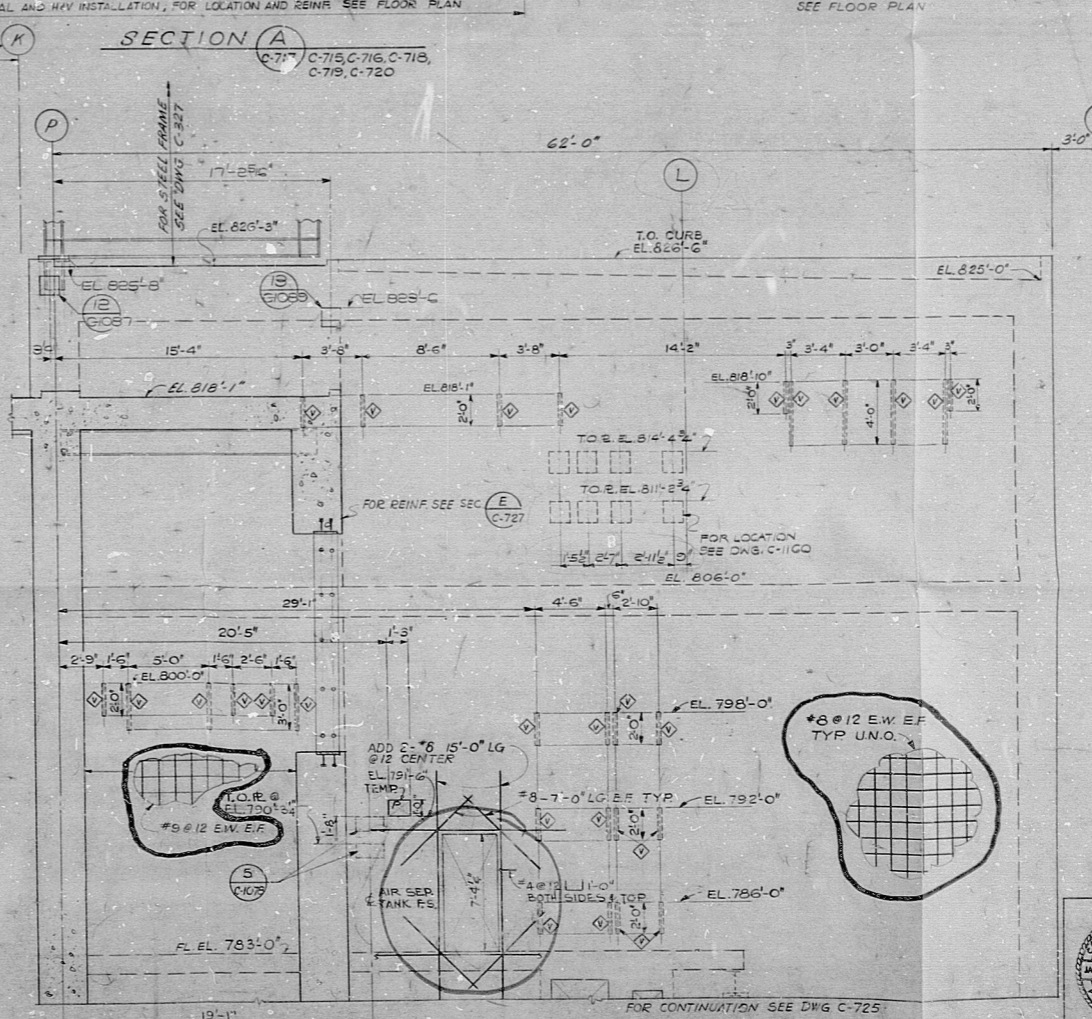
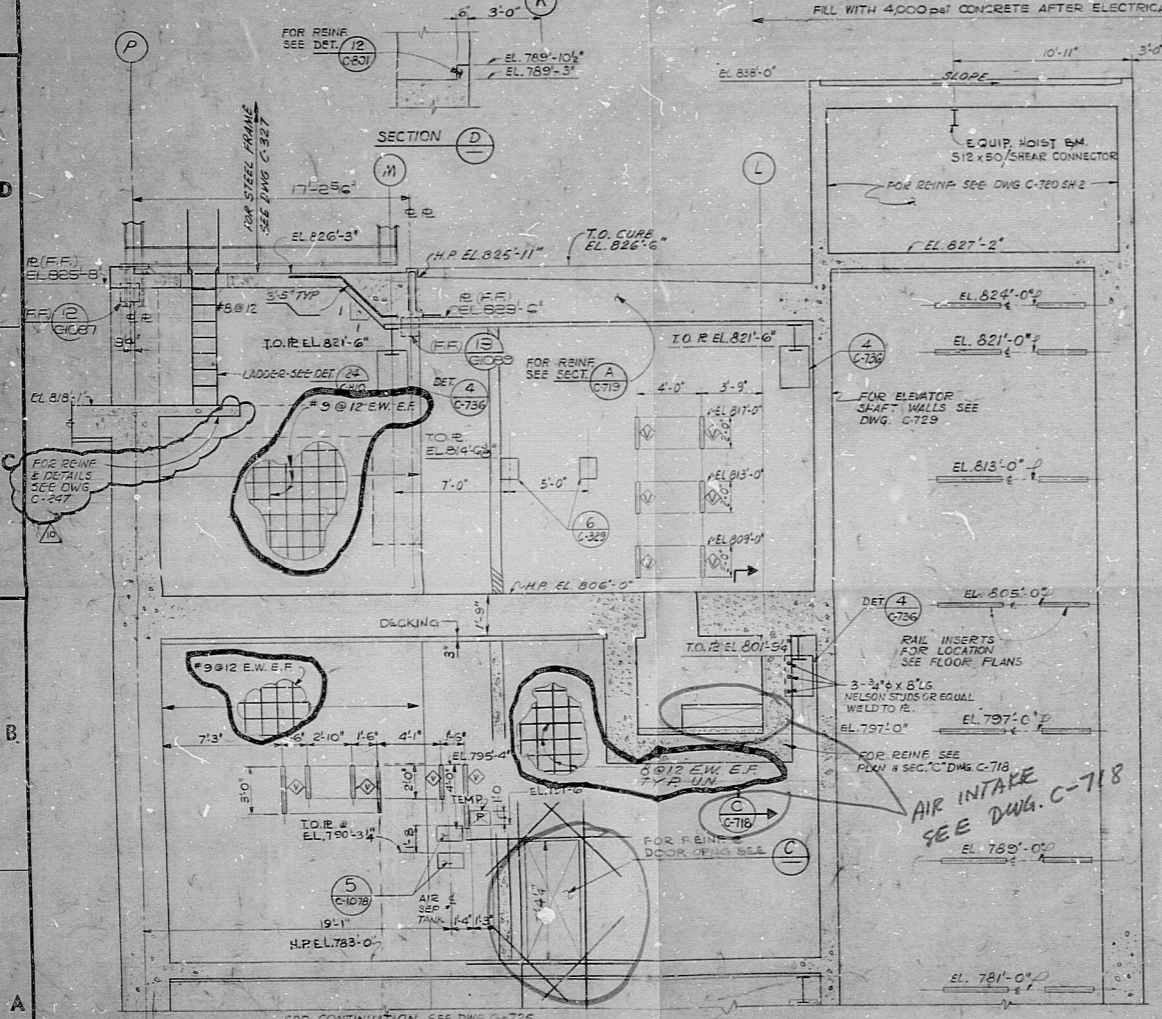
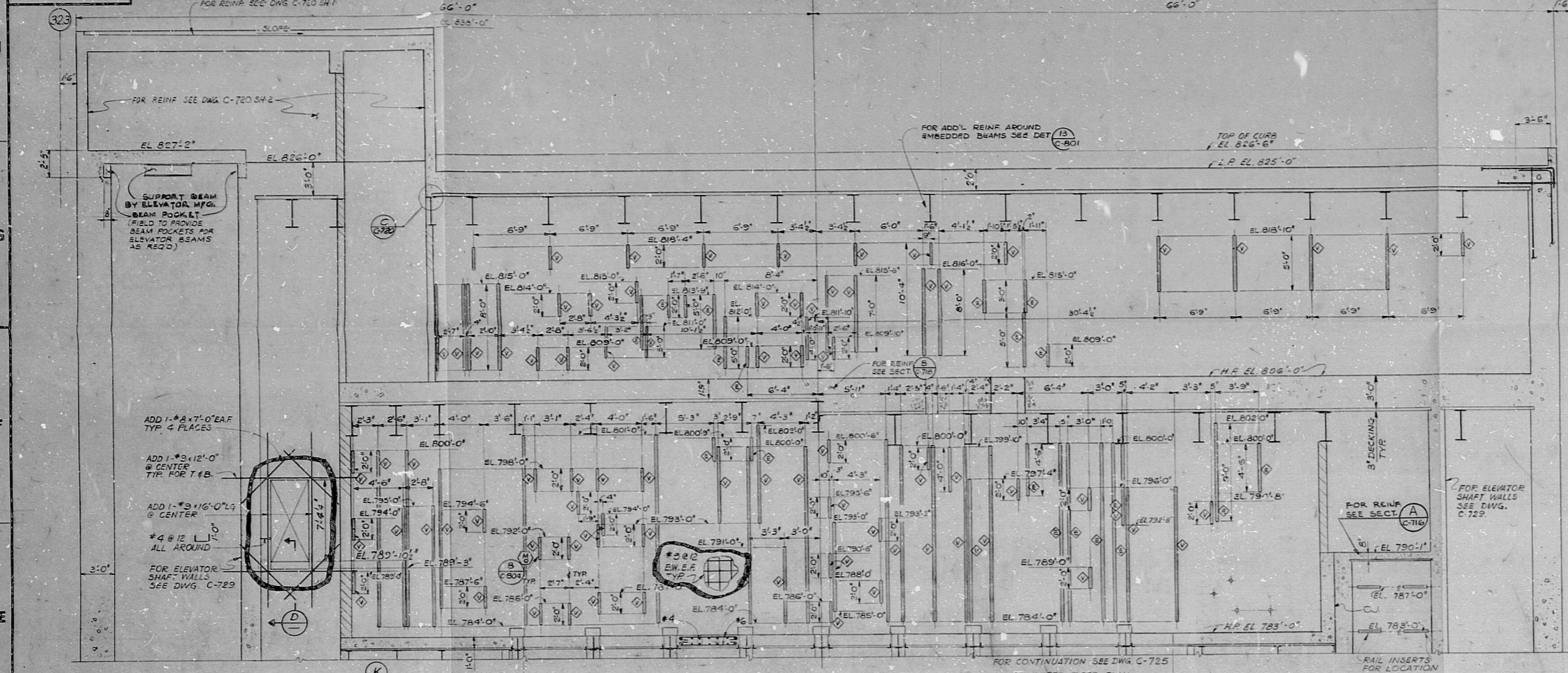


IHS-92L-C-9988

SIZE B



- NOTES:
- FOR NOTES, REFERENCE DRAWINGS & GENERAL NOTES SEE DRAWINGS C-103, C-101 & C-801 RESPECTIVELY.
 - REFERENCE DRAWINGS LISTED AND OPENINGS SHOWN HEREON ARE NOT COMPLETE. PRIOR TO CONSTRUCTION, FIELD SHALL LOCATE OPENINGS, BLOCKOUTS AND EMBEDDED PIPING FROM LATEST MECHANICAL DRAWINGS AND EMBEDDED CONDUITS FROM LATEST ELECTRICAL DRAWINGS.
 - CONCRETE SHALL BE 4000 PSI (F) UNO.
 - FOR ADDITIONAL PENETRATIONS SEE PLANT DESIGN X-SERIES DRAWINGS. WHERE CONFLICT EXISTS, X-DRAWINGS SHALL GOVERN.

REFERENCE DWG'S.		REFERENCE DWG'S.	
DECTEL NO.	PL. NO.	DECTEL NO.	PL. NO.
C-717	E-105526 SH1	C-801	E-105598 SH1
C-718	E-105526 SH2	C-715	E-105525 SH1
C-719	E-105527 SH1	C-716	E-105525 SH2
C-720 SH1	E-105527 SH2	C-803	E-105593 SH1
C-725	E-105528 SH1	C-736	E-105533
C-327	E-105531 SH4	C-1015	E-105533 SH1
C-105	E-105533 SH1	C-1100	E-105533
C-729	E-105533 SH2	C-1007	E-105534
C-727	E-105533 SH3	C-1088	E-105534
C-804	E-105533 SH2	C-810	E-105605
C-247	E-105527		

NO.	DATE	REVISIONS	BY	CHKD.
1	10/27/88	ISSUED FOR CLIENT REVIEW	Y. HAN	
2	11/10/88	REVISED FOR REINFORCEMENT FABRICATION UP TO EL. 825'-0"	Y. HAN	
3	11/10/88	REVISED FOR REINFORCEMENT FABRICATION UP TO EL. 825'-0"	Y. HAN	
4	11/10/88	REVISED FOR REINFORCEMENT FABRICATION UP TO EL. 825'-0"	Y. HAN	
5	11/10/88	REVISED FOR REINFORCEMENT FABRICATION UP TO EL. 825'-0"	Y. HAN	
6	11/10/88	REVISED FOR REINFORCEMENT FABRICATION UP TO EL. 825'-0"	Y. HAN	
7	11/10/88	REVISED FOR REINFORCEMENT FABRICATION UP TO EL. 825'-0"	Y. HAN	
8	11/10/88	REVISED FOR REINFORCEMENT FABRICATION UP TO EL. 825'-0"	Y. HAN	
9	11/10/88	REVISED FOR REINFORCEMENT FABRICATION UP TO EL. 825'-0"	Y. HAN	
10	11/10/88	REVISED FOR REINFORCEMENT FABRICATION UP TO EL. 825'-0"	Y. HAN	

TERA APERTURE CARD

PENNSYLVANIA POWER & LIGHT COMPANY
ALLENTOWN, PENNSYLVANIA
SUDBOROUGH STEAM ELECTRIC STATION - UNIT 1, UNIT 2

BECHTEL - SAN FRANCISCO

CENTRAL CONTROL BLDG UNITS 1 & 2
WALL ELEVATIONS
EL. 783'-0" TO EL. 836'-0"

JOB NO. 8856 DRAWING NO. C-726-SH1/10

DATE 11/10/88

E-105529 SH1

This drawing and the design it covers are the property of BECHTEL. They are hereby loaned and on the borrower's express agreement that they will not be reproduced, copied, loaned, exhibited, or used except by the borrower and any parties authorized in writing by the lender to do so.

RDS - PDR

8012180608

