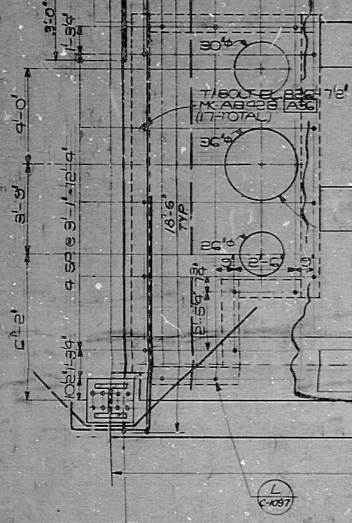
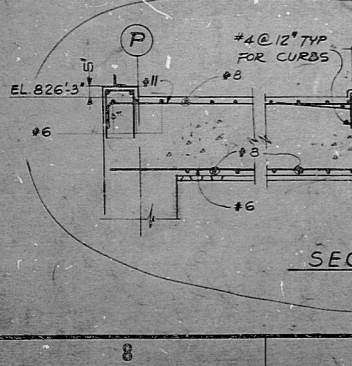


SECTION C-720
4'-0"

- NOTES:
1. FOR NOTES, REFERENCE DRAWINGS, AND GENERAL NOTES, SEE DRAWINGS C-103 & C-201 RESPECTIVELY.
 2. REFERENCE DRAWINGS LISTED AND OPENINGS SHOWN HEREBY ARE NOT COMPLETE PRIOR TO CONSTRUCTION FIELD SHALL LOCATE OPENINGS, BLOCKOUTS AND EMBEDDED PIPING FROM LATEST MECHANICAL DRAWINGS AND EMBEDDED CONDUITS FROM LATEST ELECTRICAL DRAWINGS.
 3. CONCRETE SHALL BE 4000 PSI (F) U.N.O.
 4. ALLOWABLE FLOOR LIVE LOAD = 100 P.S.F.



SECTION A-1



NO.	DATE	REVISIONS	BY	CHECKED
1		ISSUED FOR CLIENT REVIEW		
2		ISSUED FOR REINFORCEMENT FABRICATION ONLY		
3		ADD BEAMS & RE-DRAWING		
4		ISSUED FOR CONSTRUCTION		
5		ADDED PENETRATIONS & WATER SCOPPER		
6		REV. PLAN & SLAB THK ADDED		

DESIGNED: KOLLER DRAWN: Y. WAN

SCALE: 1/8" = 1'-0"

TERA APERTURE CARD

PENNSYLVANIA POWER & LIGHT COMPANY
ALLENTOWN, PENNSYLVANIA
SUSQUEHANNA STEAM ELECTRIC STATION - UNIT 1, UNIT 2

BECHTEL - SAN FRANCISCO

CENTRAL CONTROL BUILDING
ROOF PLAN
EL. 825'-0" AREA 12

JOB NO.	DRAWING NO.	REV.
8856	C-719	6

E 105527 SH1
601718057



This drawing and the design it covers are the property of BECHTEL. They are being issued under the license of copyright granted to the licensee by the owner of the drawing. No part of this drawing may be reproduced, stored, or made available to the public in any form or by any means without the prior written consent of BECHTEL.

RDI — PDR

8012180589

