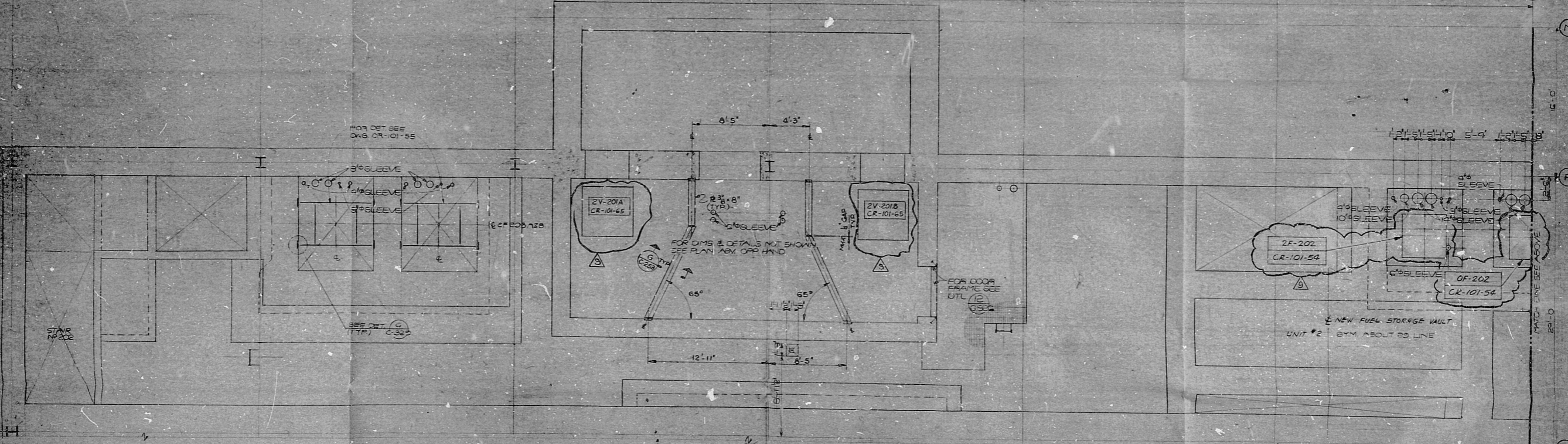
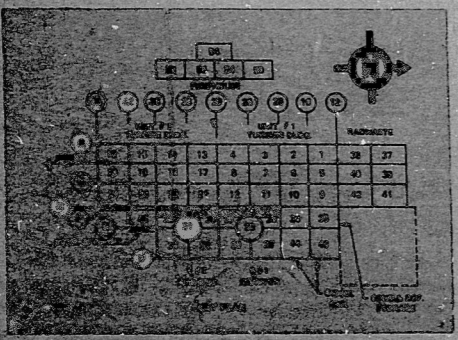


PLAN EL 799'-1 UNIT 1



PLAN EL 799'-1 UNIT 2



**REFERENCE DRAWINGS**  
 1. FOR ARCHITECTURAL FLOOR PLAN SEE DWG. 4-16  
 2. FOR EQUIPMENT LOCATIONS SEE DWG. M-249 & M-259  
 3. FOR PLUMBING & DRAINAGE PIPING SEE DWGS. P-25-B, P-27-B, P-30-B, P-32-B  
 4. FOR HEATING & VENTILATING OPENINGS SEE DWGS. V-25-B, V-27-B, V-30-B, V-32-B  
 5. FOR EMBEDDED ELECTRICAL ITEMS SEE DWG. 5-1

**NOTES**  
 1. FOR NOTES, REFERENCE DRAWINGS & GENERAL NOTES SEE DWGS. C-103 & C-801  
 2. CONCRETE SHALL BE ACCORD TO PSI (FC) (U.N.O.)  
 3. ALLOWABLE FLOOR LIVE LOAD = 250 PSF.  
 4. FOR ADDITIONAL PENETRATIONS SEE PLANT DESIGN.  
 X - SERIES DRAWINGS WHERE CONFLICT EXISTS.  
 \* - DRAWINGS SHALL GOVERN.

NO.	DESCRIPTION	DATE	BY	CHKD.
1	ISSUED FOR CLIENT REVIEW	11/17/54	J. KOZLER	J. KOZLER
2	ISSUED FOR CLIENT REVIEW	11/17/54	J. KOZLER	J. KOZLER
3	ISSUED FOR CLIENT REVIEW	11/17/54	J. KOZLER	J. KOZLER
4	ISSUED FOR CLIENT REVIEW	11/17/54	J. KOZLER	J. KOZLER
5	ISSUED FOR CLIENT REVIEW	11/17/54	J. KOZLER	J. KOZLER

REFERENCE DWG. NO.	DATE
C-103	11/17/54
C-801	11/17/54
C-259	11/17/54
C-270	11/17/54
C-271	11/17/54
C-272	11/17/54
C-273	11/17/54
C-274	11/17/54
C-275	11/17/54
C-276	11/17/54
C-277	11/17/54
C-278	11/17/54
C-279	11/17/54
C-280	11/17/54

**PENNSYLVANIA POWER & LIGHT COMPANY**  
 ALLENTOWN, PENNSYLVANIA  
 BURGESSVILLE ELECTRIC STATION - UNIT 1 & 2

BECHTEL - SAN FRANCISCO

**REACTOR BUILDING UNIT 1&2 PARTIAL FLOOR PLANS EL 799'-1**

8856 C-242 9

E-105265 S



TERA APERTURE CARD

RIDG-PDR

8012160120

