

NOTES

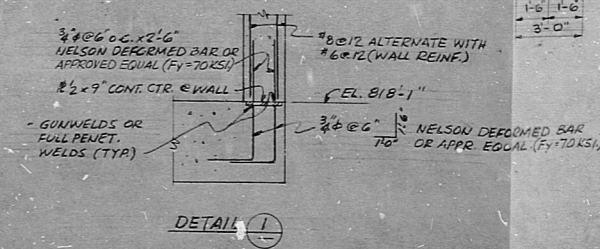
- FOR GENERAL NOTES, NOTES AND REFERENCE DRAWINGS SEE DWG. C-201 & C-108 RESPECTIVELY.
- FOR STRUCTURAL STEEL SEE DWG. C-313, C-319 & C-324.
- CONCRETE SHALL BE 4000 PSI (FC) UNO.
- ALLOWABLE FLOOR LIVE LOAD = 950 PSF.
- FOR ADDITIONAL PENETRATIONS SEE PLANT DESIGN X-SERIES DWGS WHERE CONFLICT EXISTS A DRAWING SHALL GOVERN.
- XXXXXXXXX INDICATES LIMITS WHERE DETAILS MAY BE USED AS AN OPTION TO DOWELS.

BECHTEL NO.	PL. NO.	DESCRIPTION	DATE
C-103	E-105199 SM1	C-313	E-105322
C-144	E-105213 SM1	C-319	E-105322
C-146	E-105213 SM2	C-324	E-105322
C-150	E-105213 SM1	C-313	E-105322
C-244	E-105267	C-201	E-105267
C-245	E-105268	E-272	E-105268
C-251	E-105275 SM	L-255	E-105275 SM
C-267	E-105286	C-285	E-105286

TERM APERTURE CARD

NO.	DATE	REVISIONS	BY	CHKD.	APP'D.
1		ISSUED FOR CLIENT REVIEW			
2		REVISED FOR FABRICATION			
3		REVISED FOR FABRICATION			
4		REVISED FOR FABRICATION			
5		REVISED FOR FABRICATION			
6		REVISED FOR FABRICATION			
7		REVISED FOR FABRICATION			
8		REVISED FOR FABRICATION			
9		REVISED FOR FABRICATION			
10		REVISED FOR FABRICATION			

REFERENCE DRAWINGS
 FOR ARCHITECTURAL FLOOR PLAN SEE DWG. A-17
 FOR STAIR DETAIL SEE DWG. A-141 & A-142
 FOR EQUIPMENT LOCATION SEE DWG. M-246
 FOR PLUMBING & DRAINAGE SEE DWG. P-22-7, P-27-7, P-28-7 & P-29-7
 FOR HEATING & VENTILATION SEE DWG. V-25-7, V-27-7, V-28-7 & V-29-7
 FOR EMBEDDED ELECTRICAL ITEMS SEE ELECTRICAL DWGS.



SCALE: 3/8" = 1'-0"

DESIGNED: KOZLEE DRAWN: ADONOLD

PENNSYLVANIA POWER & LIGHT COMPANY
 ALLENTON, PENNSYLVANIA
 SUDBURYHAMM STEAM ELECTRIC STATION - UNIT 1 UNIT 2
 BECHTEL - SAN FRANCISCO

**REACTOR BUILDING UNIT I
 FLOOR PLAN
 ELEVATION 818'-1" AREA 25**

JOB NO.	DRAWING NO.	REV.
8856	C-243	7

E-105266

This drawing and the design it depicts are the property of BECHTEL. They are hereby loaned to the licensee's express agreement that they will not be reproduced, copied, loaned, exhibited, or used except in the licensee's project. Any and all rights reserved by any patent, copyright, or other law.

ZIDC-PDR

8012160064

