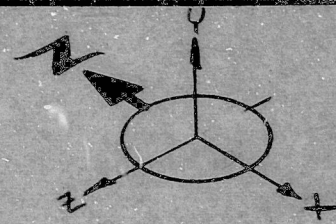
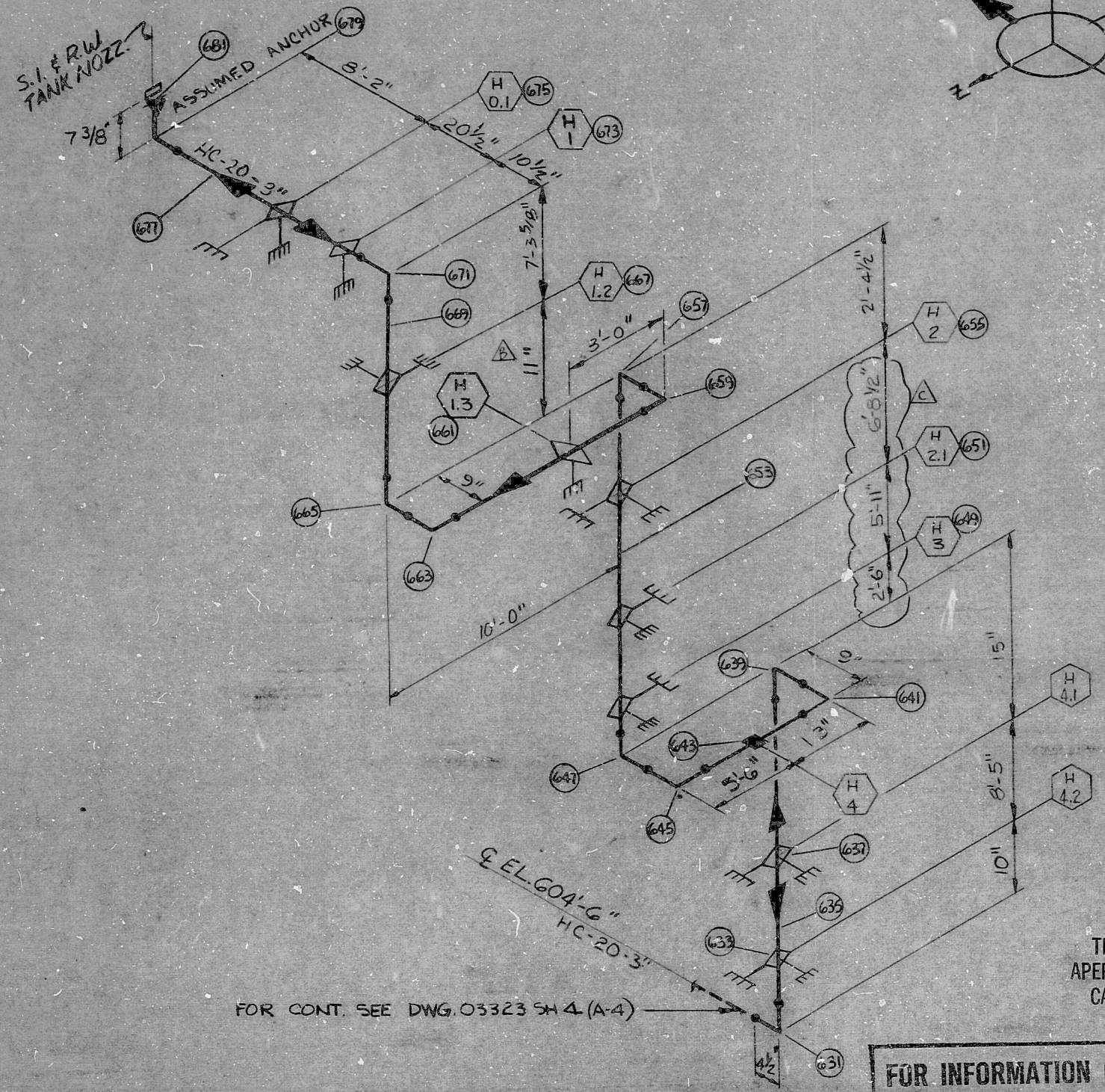


HWID A41 100 3130 2523F



REFERENCE DRAWINGS

- 1. M-202 PIPING & INSTRUMENTATION DIAGRAM
- 2. M-43 PIPING DRAWING.
- 3. M-107-30 FAB. ISO.



GENERAL NOTES

1. ALL DIMENSIONS ARE AS-BUILT DIMENSIONS PER N.R.C. I.E. BULLETIN 79-14 AND ARE WITHIN THE TOLERANCES OF 12447-033-FP2 FIELD PROCEDURE ATTACHMENT III.

C	ADDED RESTRAINT DIRECTION TO HANGERS H-4.2, 4.1, H-2 & H-0.1				
B	ADDED: TOTAL NO. OF SUPP. (A-3) MK & RESTRAINT H-1.3 (C-3) CHNGD: SH. 3 OF 13 WAS SH. 3 OF 7				
A	ISSUED FOR STRESS	REG	RAL		
No.	DATE	REVISIONS	BY	CHK	ENGR
SCALE	NO	DESIGNED	DRAWN RICHARD E. GWOZDZ		

BECHTEL

ANN ARBOR, MICHIGAN

PALISADES PLANT  
CONSUMERS POWER COMPANY  
GWO 6787

STRESS ISOMETRIC

S.I.R.W. TANK TO CHARGING PUMP

	JOB No.	DRAWING No.	REV.
	12447-033	03323 SH. 3 OF 13 (C)	C
950W18-M107-SH	BLDG. LOCATION: CBA & CBE RMS, 602' PIPEWAY STRW.		

FROM	TO	X	Y	Z	FROM	TO	X	Y	Z	FROM	TO	X	Y	Z
631	633		.833		651	653	4.000			671	673	-875		
633	635				653	655	2.700			673	675	-1.700		
635	637				655	657	2.375			675	677	-4.000		
637	639	1.250			657	659	1.750			677	679	-4.167		
639	641	.750			659	661	3.000			679	681	.615		
641	643		1.083		661	663	1.000							
643	645		5.500		663	665	1.750							
645	647	.750			665	667	.917							
647	649	2.500			667	669								
649	651	5.917			669	671								

TOTAL NO. OF SUPPORTS	10	GUIDE	RESTRAINT
TOTAL LIN. FT. OF PIPE	68'-0"	SPRING HANGER	RIGID HANGER
		DIRECTION OF RESTRAINT	DIRECTION OF EXPANSION
			SNUBBER

FOR INFORMATION ONLY

7.5"  
11"  
8.5"  
8.5"  
11"  
17"

7.5"  
11"  
8.5"  
8.5"  
11"  
17"



RFD S PDR

8012080559

