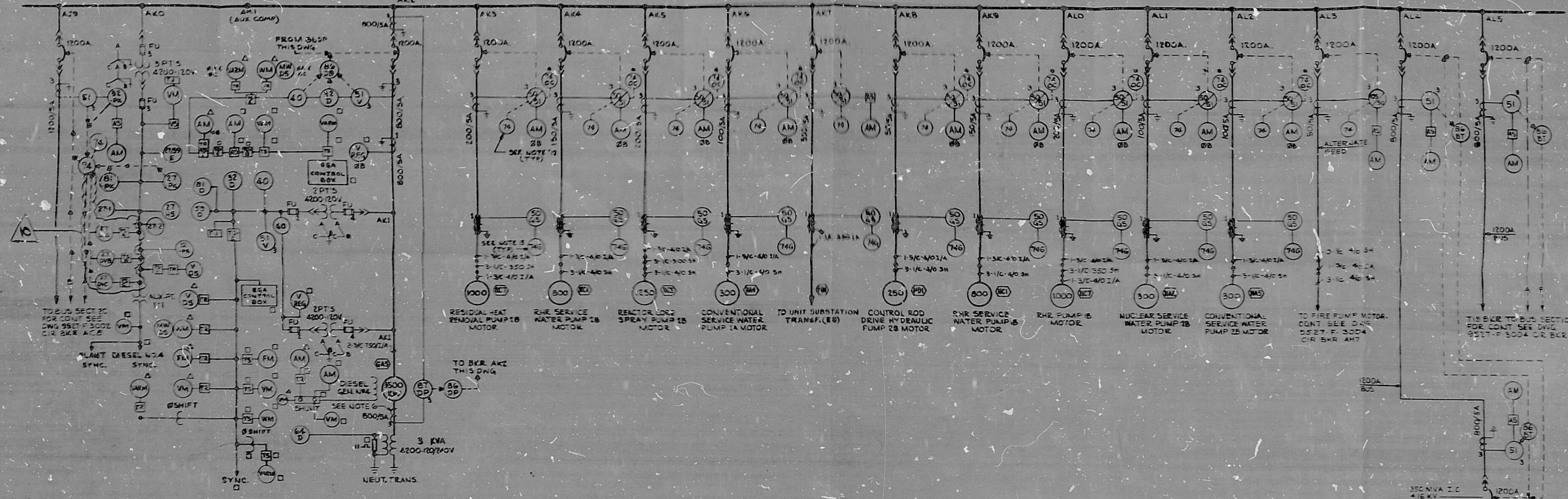
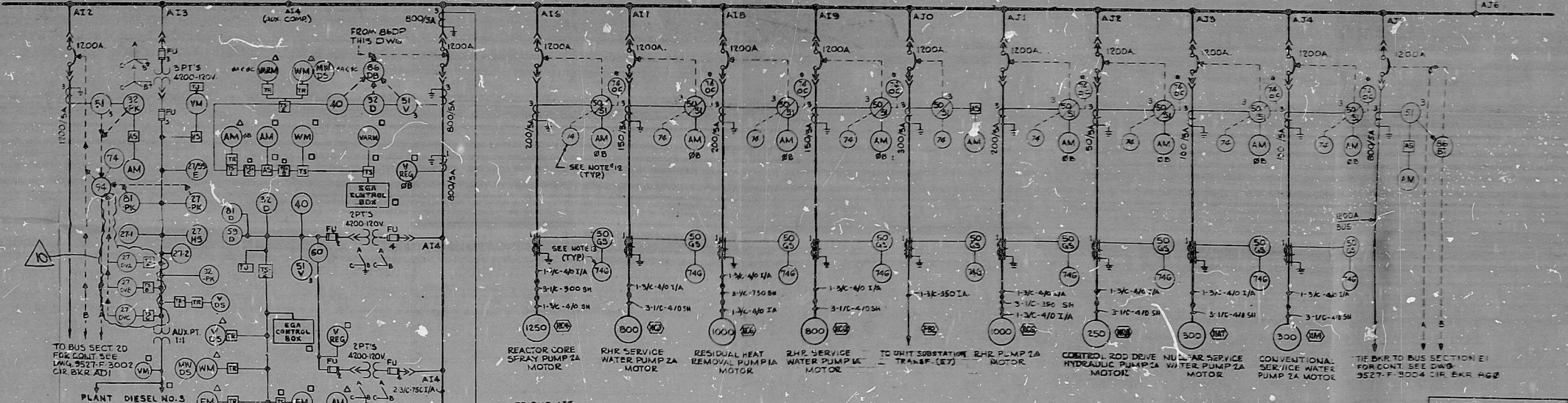


SWITCHGEAR ASSEMBLY E4 DIVISION II
BUS SECTION E4 (1200A BUS)



SWITCHGEAR ASSEMBLY E3 DIVISION I
BUS SECTION E3 (1200A BUS)



REV. NO. 5 NOTES:

- ADDED ALARM RELAYS, GROUND SENSOR RELAY GROUNDS, TEST SW. (T3/C) (T5/B) SIGNAL TO EGA CONTROL, FROM PT. CT. CIRCUIT, TEST SW. AND VARM TO DIGITAL CRT. FIELD VM. SIGNAL TO DIESEL SYNC.
- DELETED SUBSTATION TRANSFORMERS WATT HOUR METER AND ITS SIGNAL TO DATA SYSTEM.
- CHANGED NODE NO. 4 NOTES.

NOTES:

- SYMBOL (M) INDICATES METERING SIGNAL TO BE TRANSMITTED TO COMPUTER DATA SYSTEM.
- SYMBOL (A) INDICATES EQUIPMENT FURNISHED BY OTHERS & LOCATED IN CONTROL ROOM.
- SYMBOL (D) INDICATES EQUIPMENT FURNISHED MOUNTED BY DIESEL GENERATOR MANUFACTURER AS PER SPECIFICATION 9527-01-201-1.
- ALL FEEDERS TO ER CABLES UNLESS OTHERWISE NOTED.
- C.T.'S TO BE FURNISHED BY SNGR. MFR. & MOUNTED BY OT-423 AT DIESEL GENERATOR FOR DEVICE BY REF. SEE DWG 9527-F-3073, BH-1 (3080, SH-1) INDICATES SPLICE POINT.
- (M) INDICATES ALARM RELAY (DEV. 40015) ENERGIZED ONLY FROM THE TIME OVERCURRENT CONTACT (DEV. 41) OF THE OVERCURRENT RELAY (DEV. 50/51).
- ALL MOTOR STARTER BREAKERS SHALL HAVE THE FOLLOWING OVERCURRENT PROTECTION:
 - PHASES A&C EACH HAVE ONE OVERCURRENT RELAY TYPE JAC15
 - PHASE B HAS ONE OVERCURRENT RELAY TYPE JAC66C
- ALL TRANSFORMER RHR FEEDER UNITS SHALL BE PROTECTED BY THREE TYPE JAC53B OVERCURRENT RELAYS.
- T4 AUX. RELAY PROVIDES OVER TRIP ALARM AND DIGITAL CRT. INPUT. ENERGIZED FROM 2A OR 5C OVERCURRENT RELAY (DEV. 50/51) OR FROM INSTANTANEOUS UNIT OF OVERCURRENT RELAY AT 05 B.
- T4G AUX. RELAY PROVIDES ALARM FOR GROUND FAULTS.

REFERENCE DRAWINGS:

- 9527-F-3002 UNIT 2 AUX. 1-LINE DIAG. 480V SYSTEM SWGR. 21, 22, 27 & COMB
- 9527-F-3004 UNITS 1&2 AUX. 1-LINE DIAG. 480V EMERG. SWGR. E1&E2
- 9527-F-3004 UNITS 1-LINE DIAG. 480V BUSSES E7, E8, Z1, Z2, Z3 & Z4
- 9527-F-3079 UNITS 1&2 480V VOLT SWGR. E3, E4, E5, E6, E7, E8, E9, E10, E11, E12, E13, E14, E15, E16, E17, E18, E19, E20, E21, E22, E23, E24, E25, E26, E27, E28, E29, E30, E31, E32, E33, E34, E35, E36, E37, E38, E39, E40, E41, E42, E43, E44, E45, E46, E47, E48, E49, E50, E51, E52, E53, E54, E55, E56, E57, E58, E59, E60, E61, E62, E63, E64, E65, E66, E67, E68, E69, E70, E71, E72, E73, E74, E75, E76, E77, E78, E79, E80, E81, E82, E83, E84, E85, E86, E87, E88, E89, E90, E91, E92, E93, E94, E95, E96, E97, E98, E99, E100
- 9527-F-3128 UNITS 1 & 2 480V SWGR. E4, DIV-12 RELAYING & METERING THREE LINE DIAG. 2AM SH-1&2

RESTORATION
ENHANCEMENT
COMPLETE

DRAWING TRANSFERRED TO THE CUSTODY OF CP&L REV. 4-14-66 UC-3372

FIG 8-30-7

CAROLINA POWER & LIGHT COMPANY
BIRMINGHAM, STEELER ELECTRONIC PLANT

UNITS NO. 1 & 2
480V EMERGENCY SYSTEM
SWGR. E3 & E4
UNITED ENGINEERS & CONTRACTORS INC.

9527-F-3003

300319067

PDR RIDS

8503190567

