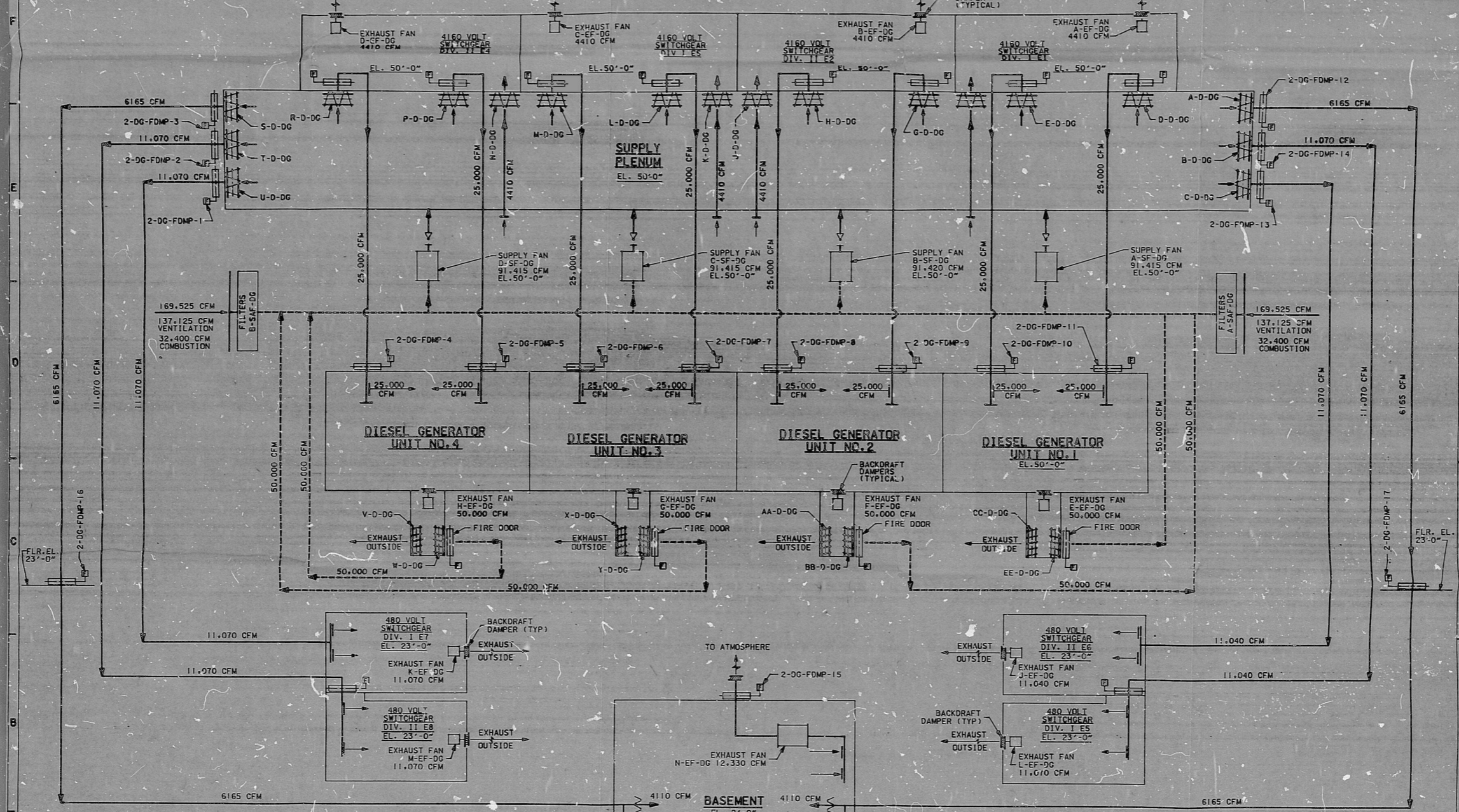


1018-G
 NH UNIT 0 311
 DATE 10-17-84
 FILE TO BRUNSWICK



LEGEND

- SUPPLY AIR DUCTED
- - - NON DUCTED AIR
- ▢ TWO POSITION DAMPER AIR OPERATED
- ▣ VOLUME CONTROL DAMPER AIR OPERATED
- ▧ FIRE DAMPER
- ▨ BALANCING DAMPER
- ▩ QUADRANT LOCKING
- BACKDRAFT DAMPER
- ▬ SELF-ACTING CHECK DAMPER

REFERENCE DRAWINGS

DESCRIPTION	DRAWING NO.
DIESEL GENERATOR BLDG. UNITS 1&2 VENTILATION SYSTEM PLANS AT EL. 23'-0" & 50'-0"	9527-F-4093
DIESEL GENERATOR BLDG. UNITS 1&2 STEAM HEATING & VENTILATION PLANS AT EL. 2'-0", 23'-0" & 50'-0"	9527-F-4094

NOTES

NORMAL MAXIMUM OPERATION REQUIRES (3) THREE SUPPLY FANS OPERATING

REV.	DATE	DESCRIPTION
4		REVISED 4 ROOMS
3		PER MIT-225
2		
1		

CAROLINA POWER & LIGHT COMPANY BRUNSWICK STEAM ELECTRIC PLANT	
DIESEL GENERATOR BUILDING VENTILATION SYSTEM AIR FLOW DIAGRAM UNITS 1 & 2	
TT APERTURE CARD	SCALE: NONE D-4101

8509170554

PDR RIDS

8503190554

