

17

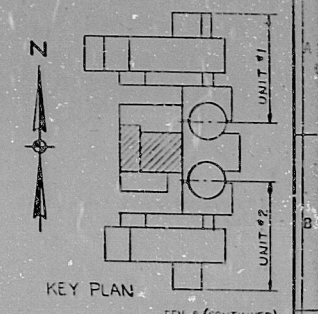
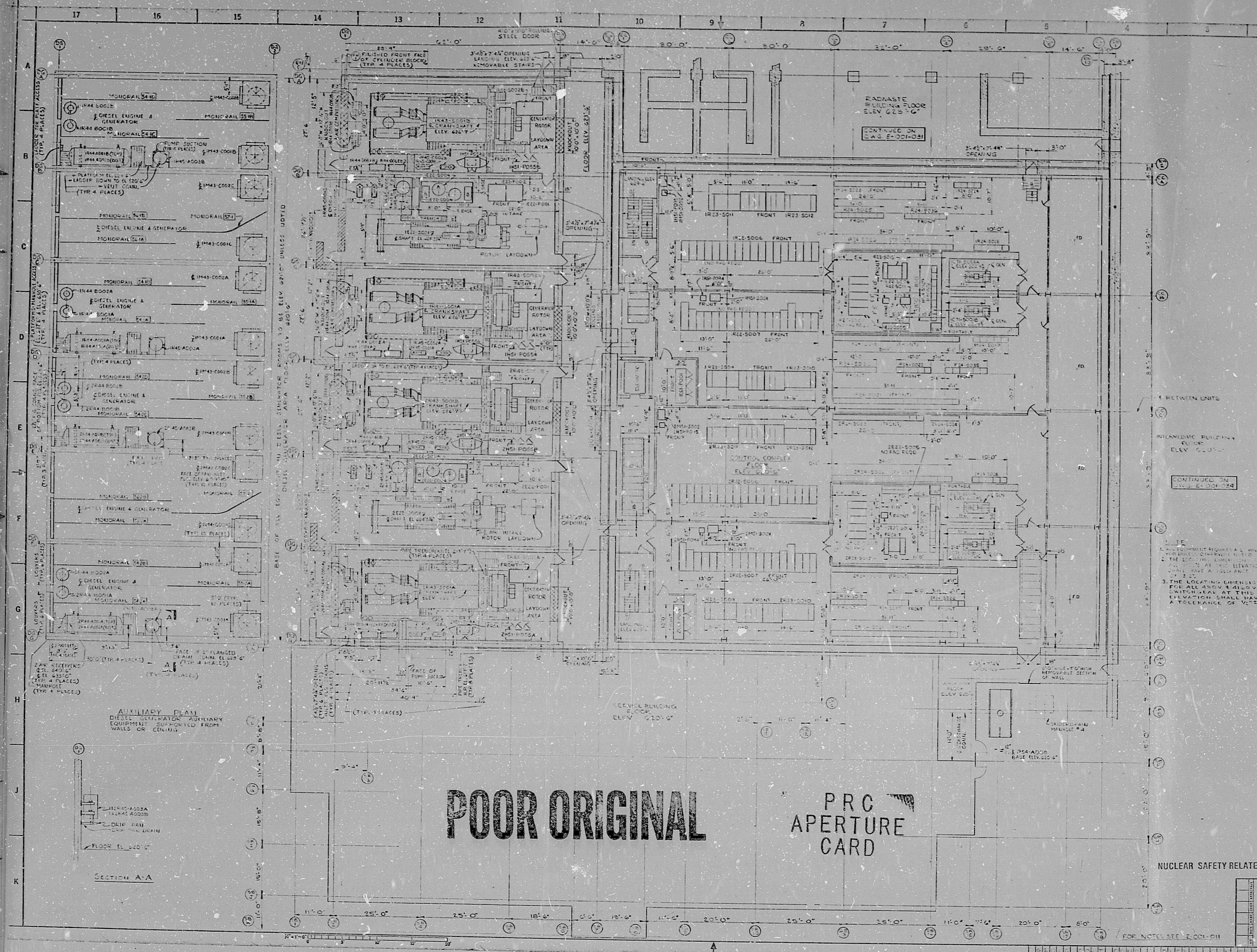
11

8

8.5"

11"

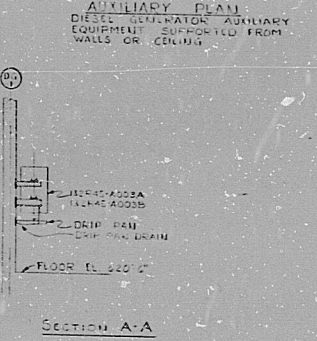
17"



- REV. 1 (CONTINUED)
- 1. REMOVE RECESS DOOR (ELEV. 625.0)
 - 2. RELOCATED DOOR (ELEV. 625.0)
 - 3. ADDED NOTE TO RECESS DOOR TO INDICATE PERMITTED TO BE OPENED TO HIGH VOLTAGE TERM. CAB. (SEE ELEV. 625.0)
 - 4. ADDED DOOR TO CHASE (ELEV. 625.0)
 - 5. ADDED DOOR TO CHASE (ELEV. 625.0)
 - 6. ADDED DOOR TO CHASE (ELEV. 625.0)
 - 7. ADDED DOOR TO CHASE (ELEV. 625.0)
 - 8. ADDED DOOR TO CHASE (ELEV. 625.0)
 - 9. ADDED DOOR TO CHASE (ELEV. 625.0)
 - 10. ADDED DOOR TO CHASE (ELEV. 625.0)
 - 11. ADDED DOOR TO CHASE (ELEV. 625.0)
 - 12. ADDED DOOR TO CHASE (ELEV. 625.0)
 - 13. ADDED DOOR TO CHASE (ELEV. 625.0)
 - 14. ADDED DOOR TO CHASE (ELEV. 625.0)
 - 15. ADDED DOOR TO CHASE (ELEV. 625.0)
 - 16. ADDED DOOR TO CHASE (ELEV. 625.0)
 - 17. ADDED DOOR TO CHASE (ELEV. 625.0)

POOR ORIGINAL

PRC APERTURE CARD



REVISIONS	
NO.	DESCRIPTION
1	ISSUED FOR CONSTRUCTION
2	REVISIONS
3	REVISIONS
4	REVISIONS
5	REVISIONS
6	REVISIONS
7	REVISIONS
8	REVISIONS
9	REVISIONS
10	REVISIONS
11	REVISIONS
12	REVISIONS
13	REVISIONS
14	REVISIONS
15	REVISIONS
16	REVISIONS
17	REVISIONS

8203170241

RIDS

8203170241

