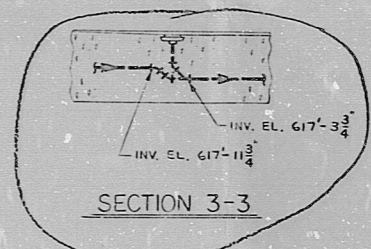


FOR CONTINUATION SEE DWG. D-921-691



PRC  
APERTURE  
CARD

NOTES:  
1. FOR NOTES, SEE DRAWING D-921-691.

REVISIONS	
NO.	DATE
1	04-25-68

DATE	RELEASED FOR	ENGR.
THE CLEVELAND ELECTRIC ILLUMINATING COMPANY		
PERRY NUCLEAR POWER PLANT UNITS 1 & 2		
BUILDING SERVICE FLOOR AND EQUIPMENT DRAINS		
DIESEL GENERATOR BUILDING DRAINS, EL. 520'-0"		
COLUMN D.E.D. TO COLUMN D.6.6 - SOUTH		
DATE	APPROVED	BY
04-25-68		
GILBERT ASSOCIATES, INC.		
ENGINEERS AND CONSULTANTS		
DATE	APPROVED	BY
04-25-68		
NO.	DATE	BY
04	4549	D-921-692 A
DRAWING NUMBER		

8203170236



RIDS

8203170236

