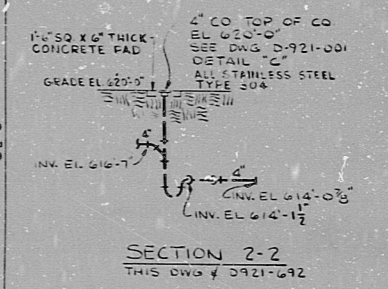
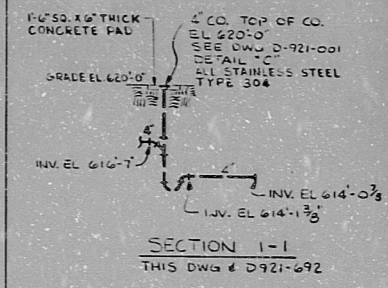


FOR CONTINUATION SEE DWG D-921-692



- NOTES:
1. PIPING IS NON-SAFETY CLASS.
 2. PIPING IS NON-SEISMIC CATEGORY.
 3. FOR PIPE MATERIAL, SEE C&I SPECIFICATION 15-4.
 4. FOR WELD END DETAILS, SEE C&I DWG. D-301-001.
 5. NO ALLOWANCE FOR WELD GAPS.
 6. LATERALS SHALL BE IN ACCORDANCE WITH C&I DWG. S-703-135.
 7. THIS DRAWING TO BE WORKED IN CONJUNCTION WITH C&I DWG. D-921-657, BUILDING FLOOR AND EQUIPMENT DRAINS AND C&I DWG. D-921-001, TYPICAL DETAILS OR ACCESSORIES FOR GRAVITY SYSTEMS.
 8. DIMENSIONS FOR FLOOR AND EQUIPMENT DRAINS IN STANDBY DIESEL GENERATOR BAYS ARE TYPICAL.

PRO APERTURE CARD

REVISIONS									
NO.	DATE MADE CHG. APPROVAL								
10-24-71	CONSTRUCTION SP-15 CJA								
	LIMITED CONSTRUCTION: AS NOTED								
	PRELIMINARY NOT FOR CONSTRUCTION								
	BIDDING PURPOSES								
DATE	RELEASED FOR ENGR.								
THE CLEVELAND ELECTRIC ILLUMINATING COMPANY									
PERRY NUCLEAR POWER PLANT UNITS 1 & 2									
BUILDING SERVICE FLOOR & EQUIPMENT DRAINS									
DIESEL GENERATOR BUILDING DRAINS EL. 620'									
COLUMN D.G. A TO COLUMN D.G. D - NORTH									
DRAWING BY: GILBERT ASSOCIATES, INC.									
ENGINEERS AND CONSULTANTS									
<table border="1"> <tr> <th>PREPARED BY</th> <th>ENGINEER APPROVAL</th> </tr> <tr> <td>J.W. Gordon</td> <td>[Signature]</td> </tr> <tr> <td>DATE: 10-24-71</td> <td></td> </tr> </table>		PREPARED BY	ENGINEER APPROVAL	J.W. Gordon	[Signature]	DATE: 10-24-71			
PREPARED BY	ENGINEER APPROVAL								
J.W. Gordon	[Signature]								
DATE: 10-24-71									
<table border="1"> <tr> <th>DATE</th> <th>NO.</th> <th>BY</th> <th>REVISION</th> </tr> <tr> <td>10-24-71</td> <td>04</td> <td>4549</td> <td>D-921-691 A</td> </tr> </table>		DATE	NO.	BY	REVISION	10-24-71	04	4549	D-921-691 A
DATE	NO.	BY	REVISION						
10-24-71	04	4549	D-921-691 A						
DRAWING NUMBER: 04549-000									

DIESEL GEN BLDG DRS EL 620'-6" NORTH

8203170231

11
8.5"
8.5"
11"
17"

RIDS

8203170231

