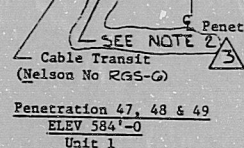


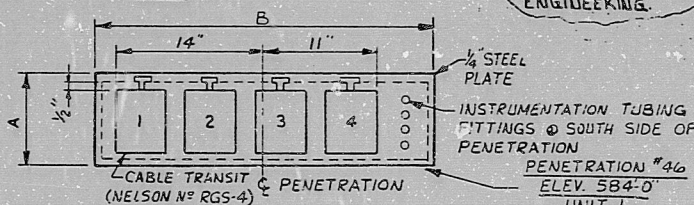
This drawing and the design it covers are the property of BECHTEL. They are merely loaned and on the borrower's express agreement that they will not be reproduced, copied, loaned, exhibited, or used except in the limited way and private use permitted by any written consent given by the lender to the borrower.



NOTE: 1. DIMENSION A & B TO BE DETERMINED BY FIELD ENGINEER TO FIT FRAME SIZE

3

2. INTERNAL COMPONENTS (ELASTIMER MODULES ECT) ARE NOT TO BE INSTALLED IN CABLE TRANSITS UNLESS SPECIFIED BY PROJECT ENGINEERING.



APERTURE
CARL

"I certify that the image contained on this frame was made in the normal and regular course of business, on the date stated below and that it is an accurate reproduction of the document submitted to the contractor for filming, by Bechtel Power Corporation."

16X

APERTURE
CARL

RIDS

803090/51

