

- GENERAL NOTES:
1. ALL PIPING MATERIALS TO BE IN ACCORDANCE WITH BECHTEL CORP. SPEC. #6280-M-300.
 2. ALL PIPING TO BE FABRICATED & INSTALLED IN ACCORDANCE WITH BECHTEL CORP. SPEC. #6200-M-301.
 3. ALL ELEVATIONS ARE TO BOTTOM OF PIPE.

- REFERENCE DWGS.:
- M-356 P. & I. D. CONTROL ROD DRIVE HYDRAULIC SYSTEM
 - M-553 PLUMBING & DRAINAGE - REACTOR BLDG. UNIT #3 - PLAN AT EL. 135'-0"

TERA APERTURE CARD

TABLE OF ADDITIONS & CHANGES USE ONLY PRINTS SHOWING LATEST DATE				MECHANICAL		INDEX NO. M-1113	
NO.	DATE	DESCRIPTION	REV'D.	CHK'D.	APPR'D.		
1	10/17/77	4223 MR. 593					

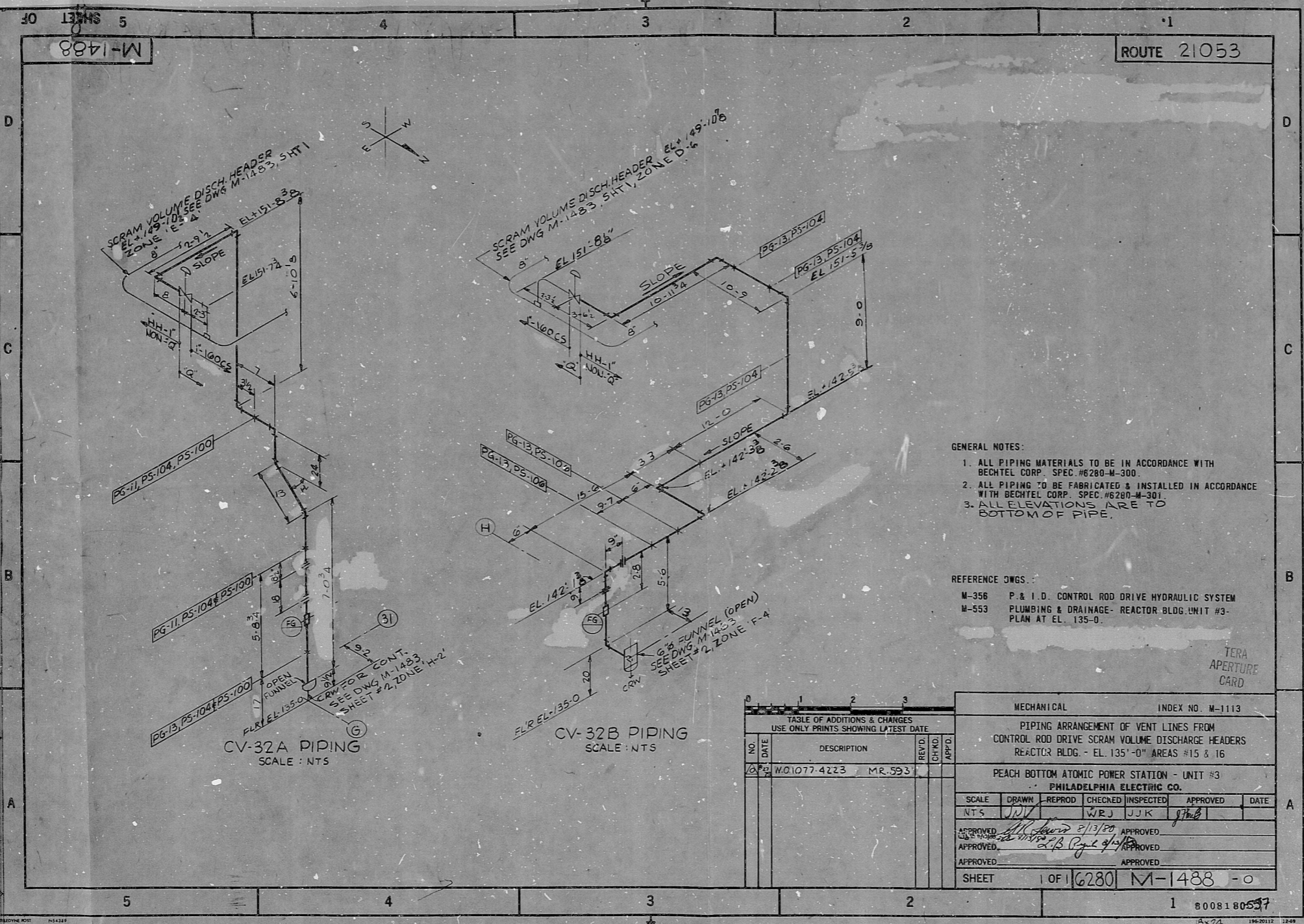
PIPING ARRANGEMENT OF VENT LINES FROM CONTROL ROD DRIVE SCRAM VOLUME DISCHARGE HEADERS REACTOR BLDG. - EL. 135'-0" AREAS #15 & #16							
PEACH BOTTOM ATOMIC POWER STATION - UNIT #3 PHILADELPHIA ELECTRIC CO.							
SCALE	DRAWN	REPROD	CHECKED	INSPECTED	APPROVED	DATE	
NTS	JJK		WRJ	JJK	JJK	8/13/80	
APPROVED	APPROVED			APPROVED			
APPROVED	APPROVED			APPROVED			
APPROVED	APPROVED			APPROVED			
SHEET	1 OF 1		6280	M-1488		-0	

CV-32A PIPING
SCALE: NTS

CV-32B PIPING
SCALE: NTS

M-1488

ROUTE 21053



1 8008180537

CF.

8008180557

