

PART NO.	QUANTITY	PART DESCRIPTION & FINISHED SIZE
P9230	1	PIPE ASSEM. W/O P9231
P9231	1	42\"/>
P9232	1	OUTER SLEEVE ASS'Y W/O P9233 & P9234
P9233	1	GUARD PIPE 30\"/>
P9234	1	GUARD PIPE 30\"/>
P9235	1	48\"/>
P9236	1	NAME R 1/2\"/>
P9237	1	NAME R 1/2\"/>
P9238	1	42\"/>
P9239	1	ADAPTER ASS'Y 50\"/>
P9240	1	NO ITEM
P9241	5	2\"/>
P9242	32	HYV. HEX HD. BOLTS 1\"/>
P9243	32	HYV. HEX NUTS 1\"/>
P9244	32	SPLIT LOCK WASHERS 1\"/>
P9245	1	NO ITEM

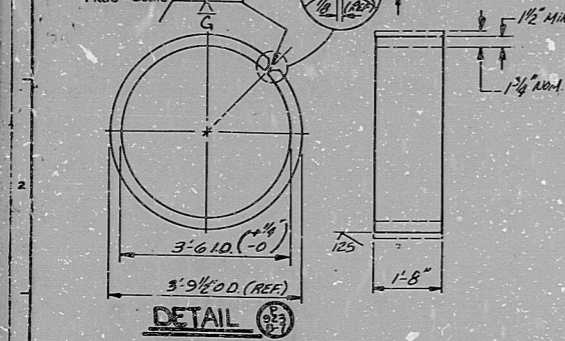
MATERIAL SPECIFICATIONS:

P9230, P9231, P9232, SA 508 CLASS 1
P9233, P9234, SA 240 TYPE 304L
P9235, P9236, SA 516 GR 70
P9237, P9238, SA 240 TYPE 304L
P9239, SA 305 TYPE 1
P9241, CS. PER ANSI B18.21
P9242, A105 & A106

SECTIONAL PLAN OF 42\"/>

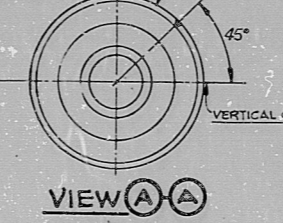
S&W PENETRATION NO. 1K1B-31C (TYPE 12)
SHIPPING WT. OF P923 1048.3000
THE WEIGHT SHALL BE LEGIBLY STAMPED
ADJACENT TO ITEM P923 B-4
SEE NOTE 6

- GENERAL NOTES:**
- FOR SECTION (X)-(X) SEE DWG. NL-11380A
 - FOR CUTTING DIAGRAMS SEE DWGS. NL-10667, NL-12589B
 - FOR IN PROCESS NODE DETAILS SEE DWGS. NL-10209B THRU NL-10609E INCLUSIVE
 - FINISHED SURFACE LPE NOT READ
 - MAX. CODE ALLOWABLE OFFSET OF ALIGNED SECTIONS IS .024"
 - MAX. CODE ALLOWABLE OFFSET OF ALIGNED SECTIONS IS .188"
 - ALL LINEAR TOLERANCE DIMENSIONS ARE TO BE IN ACCORDANCE WITH THE FOLLOWING TOLERANCES UNLESS SPECIFIED OTHERWISE:
<2-6> ±.015, <2-6> 1010-0 ±.015, <10-0> ±.015
 - ALL MACHINE FINISHED SURFACES ARE TO BE 250 RMS UNLESS SPECIFIED OTHERWISE
 - ALL BEVELED SURFACES ARE TO BE WITHIN ±.5° UNLESS SPECIFIED OTHERWISE
 - FOR PIPE SLEEVE DETAILS SEE DWG. NL-10670
 - FOR SHOP & FIELD NOTES SEE DWG. NL-10409
 - WELD TO BE POST WELD HEAT TREATED PER PROC. P.W.H.T.-5
 - PIPE PROTECTORS TO BE TAPED ON BEFORE SHIPPING & AFTER HYDRO TESTING AS SHOWN ON DWG. NL-10482
 - FOR DETAILS OF COVE BOUNDARY, P9236, P9238-7, P9239, P9240, & HYDRO TEST REQUIREMENTS SEE DWG. NL-10333
 - FOR CLEANING & COATING INSTRUCTIONS, SEE DWG. NL-10342
 - CAP TO BE WELDED ON P9233-2 FOR HYDRO TEST. AFTER HYDRO TEST, ASSEMBLY P9233 IS TO BE CUT TO END LENGTH
 - FOR NAME R. DETAIL SEE DWG. NL-10382-A



NOTE: P923 B-7 IS TO BE WELDED TO FIT UP ON PIPE.

- THE EDGE TOLERANCE FOR THIS DIMENSION SHALL BE ±.1\"/>
- THE AS-BUILT ELEV. OF W.P.2 SHALL BE EQUAL TO THE AS-BUILT ELEV. OF W.P.1
- THE AS-BUILT HORIZ. OFFSET FROM THE CONTAINMENT OF W.P.2 SHALL BE EQUAL TO THE AS-BUILT HORIZ. OFFSET FROM THE CONTAINMENT OF W.P.1 WITHIN A TOLERANCE OF ±.1"



REINFORCING RING ORIENTATION (PIPE PROTECTOR NOT SHOWN)

PURCHASE ORDER NO. 219-717-0056
J.O. NO. 12210
RIVER BEND STATION - UNIT 1
GULF STATES UTILITIES CO.
WEST PELICIANA PARISH, LOUISIANA
REF. S&W DWG. 10210-EV-1W

CUSTOMER IDENTIFICATION
GULF STATES UTILITIES
DRAWER ORDER NO. 6040-N
DRAWN BY: [Signature]
CHECKED BY: [Signature]
APPROVED BY: [Signature]
SCALE: NONE
DATE: 4/22/77

SECTIONAL PLAN OF 42\"/>

STATE & WEBSTER ENGINEERING CORPORATION
RIVER BEND STATION - UNIT 1
GULF STATES UTILITIES COMPANY

APPROVED AS REVISED SPECIFICATION
RELEASED FOR FABRICATION
RELEASED FOR MATERIAL PURCHASE

REVISIONS:

NO.	DATE	DESCRIPTION
1	10/11/77	ISSUE FOR FABRICATION
2	10/11/77	ISSUE FOR RECORD
3	10/11/77	ISSUE FOR RECORD

DESIGN ENGINEER'S DATE STAMP (D)
OCT 27 1981 J.W. PHEE

INITIALS OF SELECTED REVIEWERS

RESPONSIBLE ENGINEER'S DATE STAMP (E2)
OCT 29 1981 [Signature]

3 S&W EQUIP. ID. CODE (E1) AREA DESIGNATION
K10380

FUNCTIONAL TITLE (F)
SECT. PLAN

DATE (D) 10/11/77

JOB ORDER NO. 12210-100

APERTURE CARD

8202230643

ATTACHED TO: RBS-2312
Nuclear Document Control
FEB 5 1982

RIDS

8202230643

