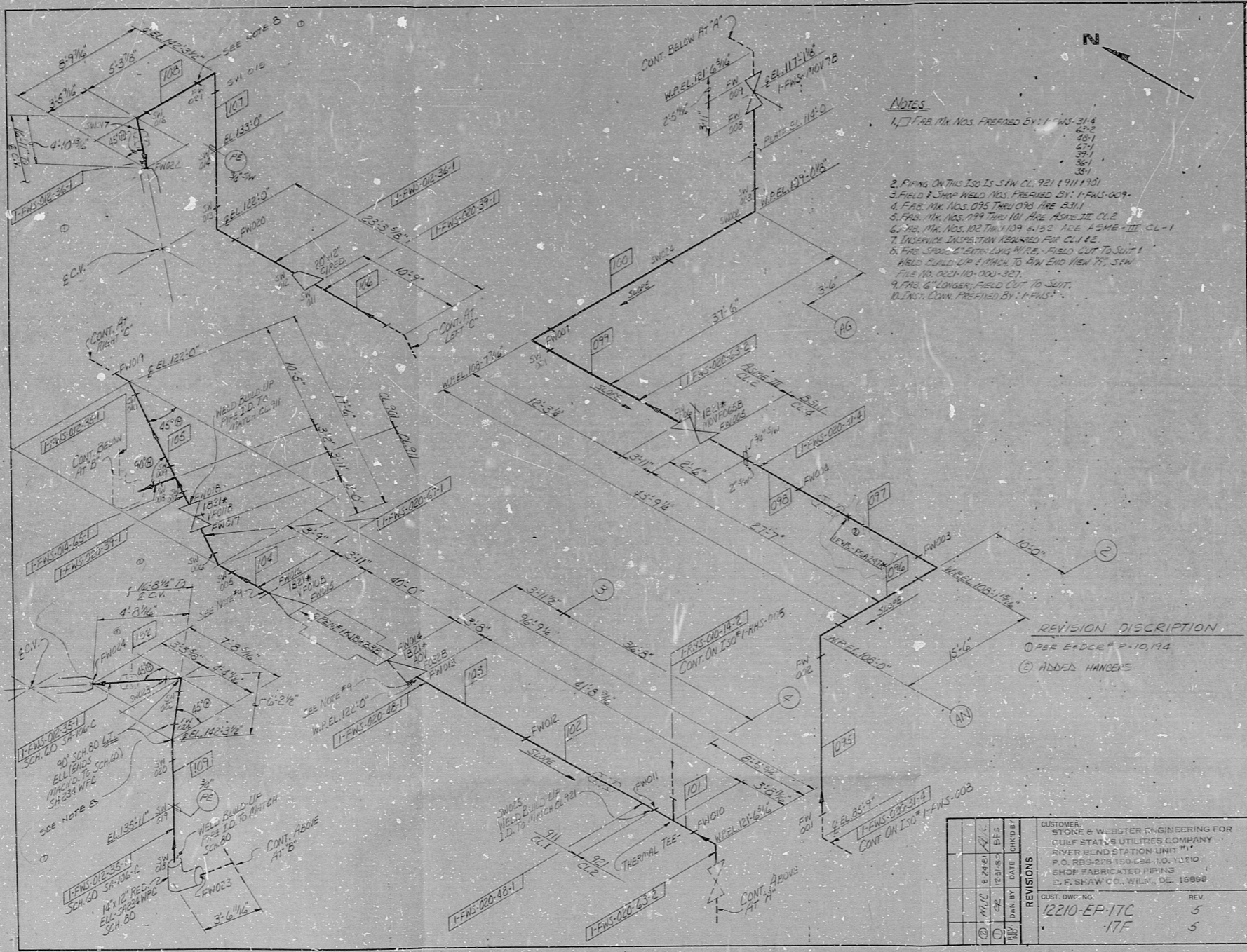


34
22
17
11
8.5
0.5
11
17
22
34



NOTES

- FAB. MK. NOS. FABRICATION BY: I-FWS-314
- FIELD 1 SHAP WELD NOS. FABRICATION BY: I-FWS-009
- FAB. MK. NOS. 095 TRU 095 ARE 231.1
- FAB. MK. NOS. 099 TRU 101 ARE 231.1
- FAB. MK. NOS. 102 TRU 109 ARE 231.1
- FAB. MK. NOS. 103 TRU 110 ARE 231.1
- FAB. MK. NOS. 104 TRU 111 ARE 231.1
- FAB. MK. NOS. 105 TRU 112 ARE 231.1
- FAB. MK. NOS. 106 TRU 113 ARE 231.1
- FAB. MK. NOS. 107 TRU 114 ARE 231.1
- FAB. MK. NOS. 108 TRU 115 ARE 231.1
- FAB. MK. NOS. 109 TRU 116 ARE 231.1
- FAB. MK. NOS. 110 TRU 117 ARE 231.1
- FAB. MK. NOS. 111 TRU 118 ARE 231.1
- FAB. MK. NOS. 112 TRU 119 ARE 231.1
- FAB. MK. NOS. 113 TRU 120 ARE 231.1

VALVE TAG NO.	QTY.	SIZE	REMARKS
V100	1	20"	
V101	1	20"	
V102	1	20"	
V103	1	20"	
V104	1	20"	
V105	1	20"	

SPECIALTIES & LOOSE MATERIALS		
QTY.	DESCRIPTION	REMARKS
1	1/2" SCH. 40 S.S. PIPE	
1	20" SCH. 40 S.S. WELD	
1	20" SCH. 40 S.S. WELD	

REVISION DESCRIPTION

① PER EDGE P-10, 194

② ADDED HANGES

CUSTOMER: STONE & WEBSTER ENGINEERING FOR RIVERHEAD STATION UNIT		REV.		DWN.		JOB NO.	
1	177	5	177	3-21-81	1-FWS-009	7908	
2	177	5	177	3-21-81	1-FWS-009	7908	

BENJAMIN F. SHAW CO.
WILMINGTON, DELAWARE

FEED WATER

ERECTOR: B.F. SHAW

DATE: 3-21-81

REVISION DATA FORM

STONE & WEBSTER ENGINEERING CORPORATION

REVISION: 1

DESCRIPTION: 1 20" SCH. 40 S.S. WELD

DATE: 12-7-81

DESIGNER: B.F. SHAW

CHECKED: B.F. SHAW

DATE: 12-7-81

PROJECT: RIVERHEAD STATION UNIT

DRAWING NO.: 12210-009

ATTACH TO MFR'S DRAWING

APERTURE CARD 8202230640

RIDS

8202230640

