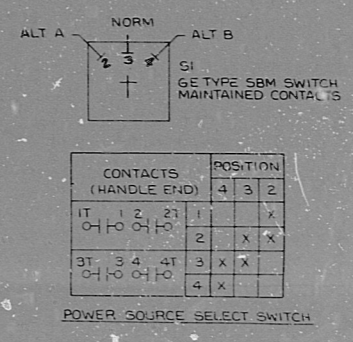
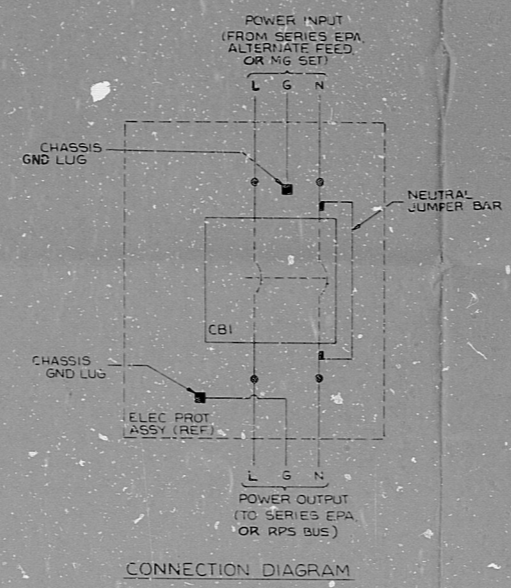
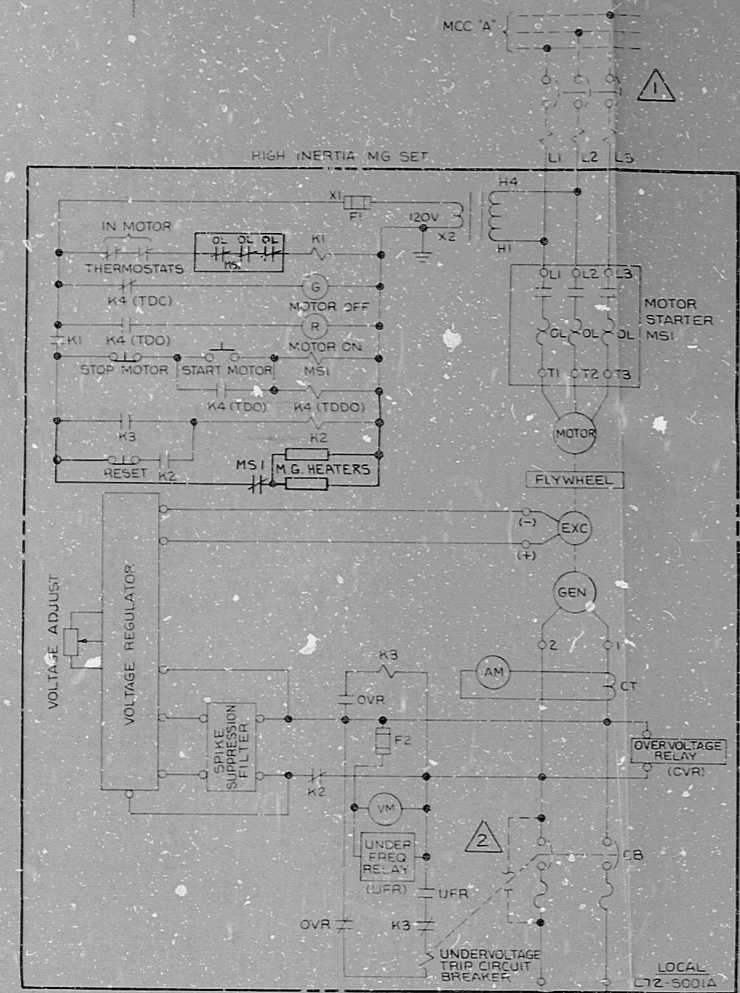


34"  
22"  
17"  
11"  
9.5"  
11"  
17"  
22"  
34"

GENERAL ELECTRIC 744E683  
ELEM DIAG MOD  
RPS MG SET  
CAROLINA 12 82020273  
FCP 491X415 G1 & G2

**NUCLEAR SAFETY RELATED**



GE TYPE CR105 RELAY TABULATION

1	2	3	4
1	2	3	4
1	2	3	4
1	2	3	4

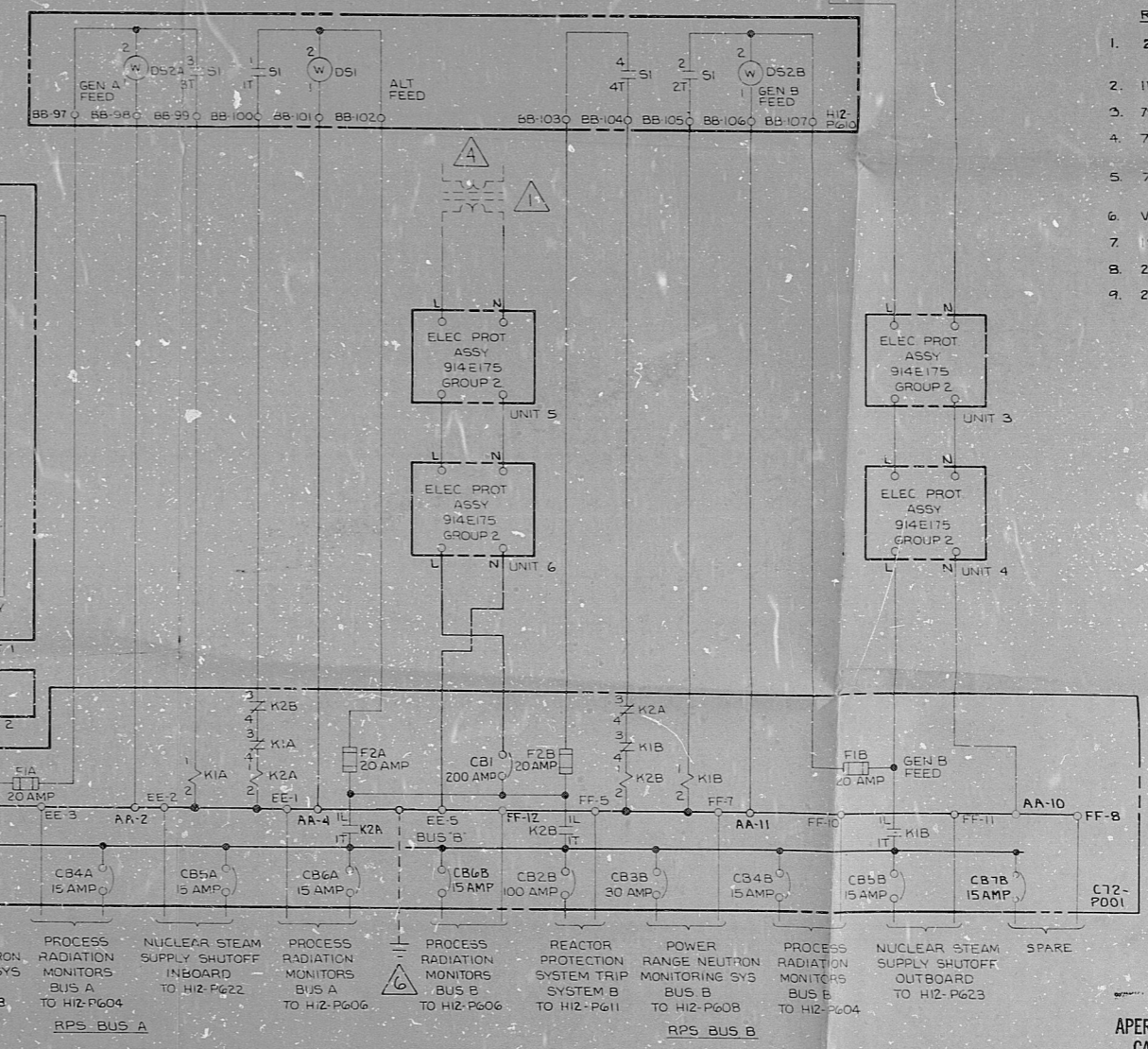
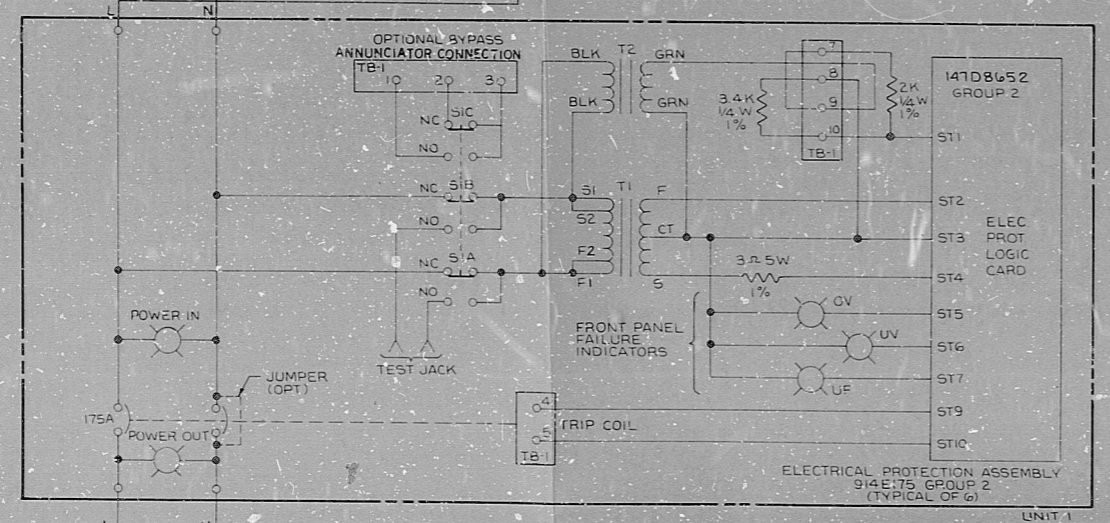
CONTACTS (HANDLE END) POSITION

1	2	3	4
1	2	3	4
1	2	3	4
1	2	3	4

\* CONTACT TO BE CONVERTED TO NORMALLY CLOSED POSITION

- NOTES
- THE DOTTED PORTION REPRESENTS EQUIPMENT TO BE FURNISHED BY THE A.E.
  - MG SET IS SUPPLIED WITH DOUBLE POLE OUTPUT CIRCUIT BREAKER. FIELD MAY INSTALL JUMPER ACROSS CONTACTS ON THE GROUND SIDE OF THE CIRCUIT BREAKER IF NECESSARY TO MEET A.E. REQUIREMENTS.
  - BUS A AND ASSOCIATED CIRCUIT BREAKERS SHOULD BE SEPARATED FROM BUS B AND ASSOCIATED CIRCUIT BREAKERS WITH A METAL BARRIER.
  - ALTERNATE FEED TRANSFORMER: PRIMARY FROM PLANT MCC SECONDARY 120 VCLTS 1Ø
  - UNLESS OTHERWISE INDICATED THE FOLLOWING REFERENCE DESIGNATIONS SHOWN ON THIS DIAGRAM ARE PREFIXED WITH C11B FOR CAROLINA NS2 & C72B FOR CAROLINA NS1.
- REFERENCE DRAWINGS
- | DRAWING | NAME             |
|---------|------------------|
| D5XX    | INDICATING LIGHT |
| FXX     | FUSE             |
| KXX     | RELAY            |
| SXX     | SWITCH           |
| CBXX    | CIRCUIT BREAKER  |
- CONNECT TO STATION GROUND AT CONTROL ROOM PANEL H12-P60B.

- REFERENCE DOCUMENTS
- 23AA9160 RPS MG SET PURCHASE SPECIFICATION
  - 115D6002RL RPS MG SET ELEMENTARY
  - 791E415RM RPS-INTERCONNECTION SCHEME
  - 791E414RM REACTOR PROTECTION SYSTEM - ELEM.
  - 732E174 REACTOR PROTECTION SYSTEM - IED
  - VPF 3830-83-6 EPA INSTRUCTION MANUAL
  - 184C4476 EPA ELECTRICAL SCHEMATIC
  - 21A3120 EPA PURCHASE SPECIFICATION
  - 22A7765 EPA INSTALLATION SPECIFICATION



APERTURE CARD

REVISED BY: AML-1895 215A 215CL

82020273

744E683

13 12/1/87

RIDS

8202030273

