

EIS IDENT: CL I PP CYCLES - FW

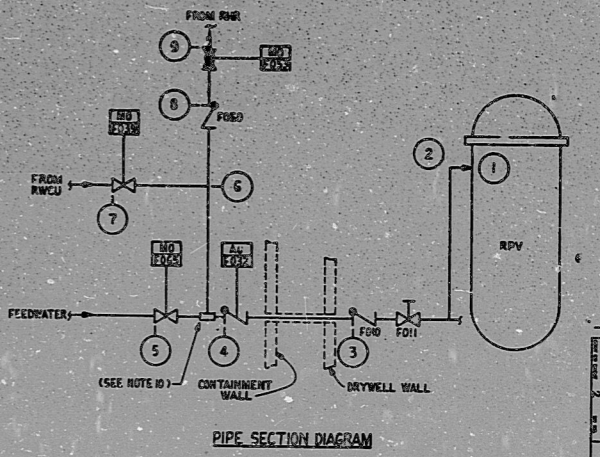
GENERAL ELECTRIC 794E735

CLASS I PIPING CYCLES - FEEDWATER

| | | | |
|----------|-----|------|----------------|
| REVISION | NO. | DATE | DESCRIPTION |
| 1 | | | INITIAL DESIGN |
| 2 | | | REVISED |

MPL NO B21-3000

| | |
|------------------|---|
| OVERALL REVISION | 1 |
| SHEET NO. | 1 |
| TOTAL SHEETS | 2 |



- NOTES:
- EVENTS AND TRANSIENTS (1) AND (3) THROUGH (21) ARE "NORMAL CONDITIONS" OR "UPSET CONDITIONS" AS DEFINED IN PARAGRAPHS NB-3113.1 AND NB-3113.2 OF SECTION III OF THE 1974 ASME B AND PV CODE.
 - EVENT (2) IS A "TESTING CONDITION" AS DEFINED IN PARAGRAPH NB-3114 OF SECTION III OF THE 1974 ASME B AND PV CODE.
 - EVENTS AND TRANSIENTS (22) THROUGH (26) ARE "EMERGENCY CONDITIONS" AS DEFINED IN PARAGRAPH NB-3113.3 OF SECTION III OF THE 1974 ASME B AND PV CODE. THE ACTUAL 40 YEAR ENCOUNTER PROBABILITIES ARE 4E-07.
 - EVENT (27) IS A "FAULTED CONDITION" AS DEFINED IN PARAGRAPH NB-3113.4 OF SECTION III OF THE 1974 ASME B AND PV CODE.
 - LEAK CHECKS AT 400 PSIG PRIOR TO POWER OPERATIONS. 3 CYCLES/START UP.
 - MECHANICAL LOADS DUE TO SAFETY RELIEF VALVE DISCHARGE SHOULD ALSO BE CONSIDERED (SEE REF. 1).
 - FLOW CURVES SHOW RECOVERY AFTER CLEARING CONDITIONS THAT CAUSED SCRAM.
 - FEEDWATER FLOW TURNED OFF - ON PERIODS OF LOW FEEDWATER FLOW. 6 TIMES PER HOUR DURING PERIODS OF LOW FEEDWATER FLOW.
 - EVENT (8) ASSUMES 100% STEAM BYPASS CAPABILITY. FOR REACTOR PLANTS WITH LESS THAN 100% BYPASS CAPABILITY THE TRANSIENTS WILL BE LESS SEVERE. FLOW INCREASES AFTER 310 MINUTES.
 - THERMAL SLEEVE IS SHOWN AS ONE POSSIBLE METHOD OF ACCOMMODATING AT BETWEEN CLEAN UP AND FW STREAMS. OTHER METHODS WHICH MEET APPLICABLE CODE REQUIREMENTS MAY BE USED.
 - IN LIEU OF USING THE PEAK PRESSURE AS DESIGN PRESSURE FOR ACTIVE VALVES, IT IS PERMISSIBLE TO DEMONSTRATE BY OVERPRESSURE TESTING THAT THE VALVE REMAINS OPERABILITY SUBSEQUENT TO THE TRANSIENT.
- SUPPLEMENTAL DOCUMENTS UNDER THE FOLLOWING IDENTITIES ARE TO BE USED, IN CONJUNCTION WITH THIS DRAWING.

REFERENCE DESIGNATOR

| | |
|---------------------------------------|----------|
| 1. CLASS I PIPING CYCLES - MAIN STEAM | B21-3000 |
| 2. PIPING AND INSTRUMENT SYMBOLS | A42-1010 |

TERA APERTURE CARD

CLUTON 1 & 2
MPL ITEM NO B21-3000
PART OR GROUP NO.

| | | | |
|--------------|---------|--------------|---------|
| DESIGNED BY | DATE | APPROVED BY | DATE |
| 1. K. WILSON | 1/20/79 | 1. K. WILSON | 1/20/79 |
| 2. J. GARCIA | 1/20/79 | 2. J. GARCIA | 1/20/79 |

794E708
SAM JOSE

8201260353

RIDS

8201260353

