

4950C67
Dwg
SHEET 1

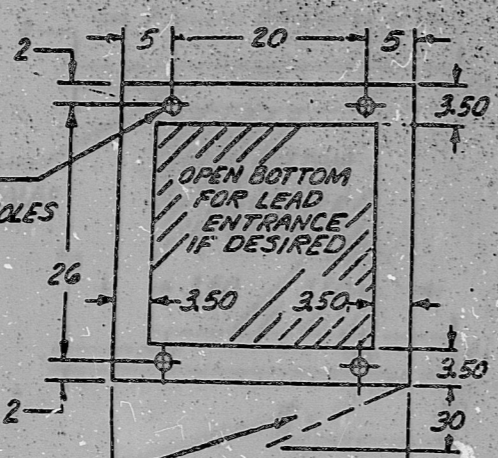


WESTINGHOUSE ELECTRIC CORPORATION
7.5KVA FIXED FREQUENCY INVERTER
OUTLINE & EXTERNAL CONNECTIONS

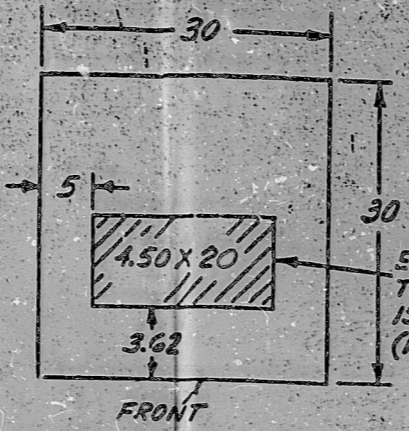
SUB 1
CONT'D ON 2
4950C67
INDUSTRY SYSTEMS
BUFFALO NEW YORK
Dwg
SHEET 1

DEPART. ENGINEERING SERVICES
STATUS: 1. COMPLETE PEAK STEAR ELECTRIC STATION
AND 2. MANUFACTURED
CERTIFICATION LETTER NO. EP/SL-23721
MPT-2319
AUTY. VIT: G. L. HOKHMAN
ENGR. LTR. NO. EP/SL-23721

FLOOR PLAN



TOP VIEW

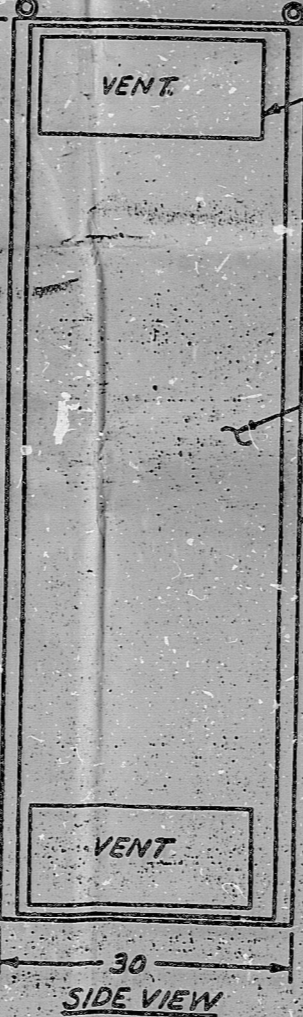


FRONT

WEIGHT - 1150 LBS



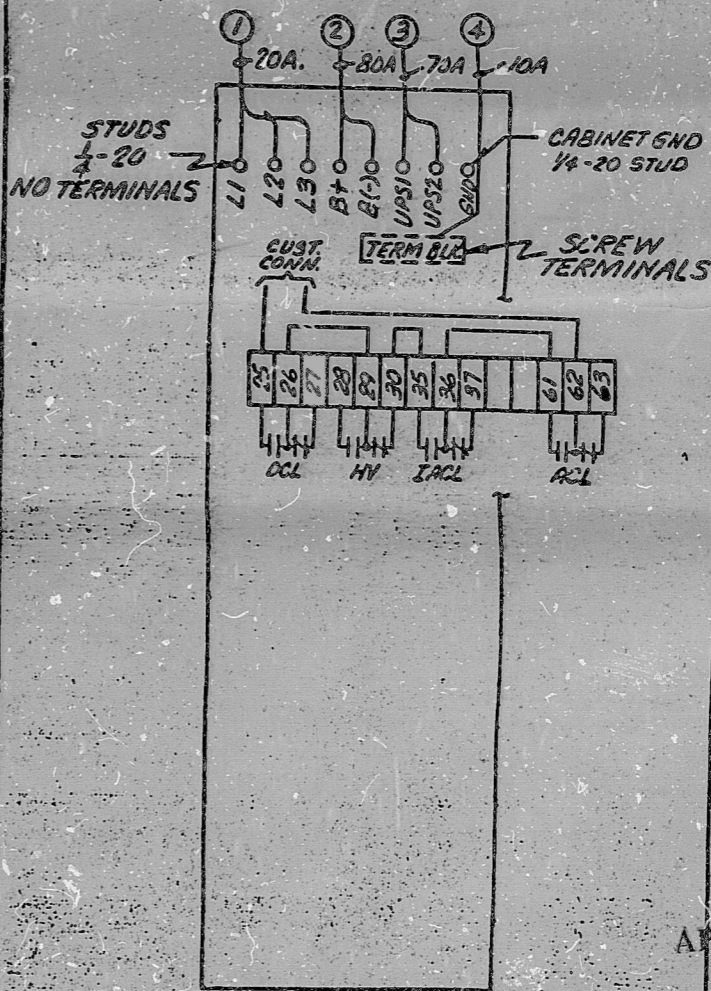
FRONT VIEW



SIDE VIEW

- A - RECTIFIER AC CURRENT
- B - D.C. INPUT CURRENT (FROM BATTERY)
- C - INVERTER AC CURRENT (OUTPUT)
- D - INVERTER AC VOLTAGE (OUTPUT)
- E - RECTIFIER AC AMMETER SWITCH
- F - INVERTER PRECHARGE PUSHBUTTON
- G - OVERCURRENT INDICATING LIGHT
- H - OVERCURRENT RESET PUSHBUTTON
- J - RECTIFIER AC INPUT BREAKER
- K - BATTERY INPUT BREAKER
- L - INVERTER D.C. INPUT BREAKER
- M - INVERTER A.C. OUTPUT BREAKER

- ① - TO 3PH. A.C. SUPPLY
- ② - TO BATTERY
- ③ - TO 110V. A.C. 1PH. 60HZ. LOAD
- ④ - TO CUSTOMER ALARM CIRCUIT



EXTERNAL CONNECTIONS

FOR OFFICE AND
ENGINEERING USE ONLY

8906120243

PDR / DF

8906120243

