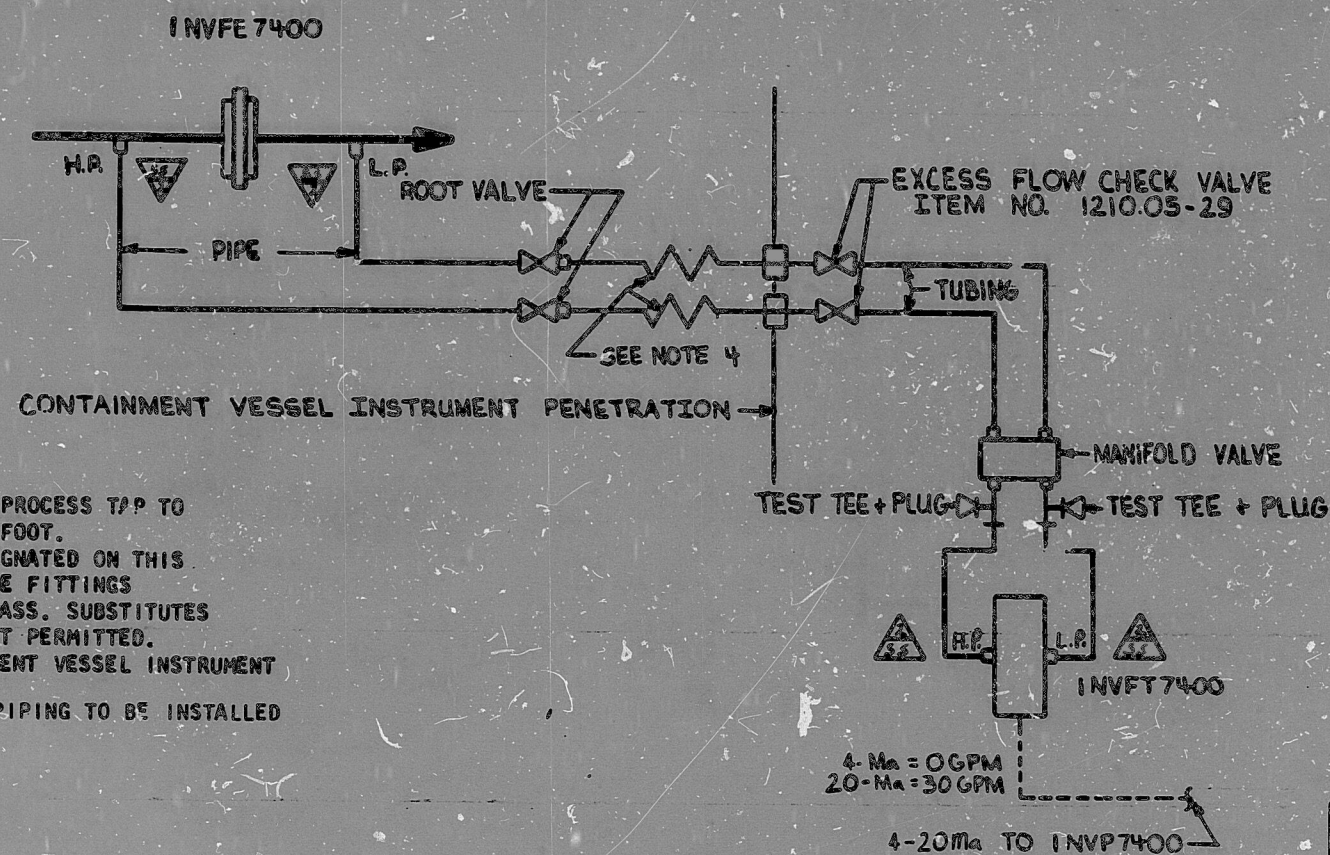


# NUCLEAR SAFETY-RELATED EXCLUSIONS

1. Fittings, tubing, piping & valves (not part of a safety-related piping system, etc.)  
a) NONE
2. Instruments (do not serve a safety function)  
a) INVFE7400, INVFT7400  
INV 7400



## NOTES

1. SLOPE IMPULSE LINE DOWNWARD FROM PROCESS T/P TO INSTRUMENT A MINIMUM OF 1/4" PER FOOT.
2. FITTINGS, TUBING, AND VALVES DESIGNATED ON THIS DETAIL BY CLASSIFICATION 5a OF THE FITTINGS CLASSIFICATION LIST ARE SAFETY CLASS. SUBSTITUTES FROM OTHER CLASSIFICATIONS ARE NOT PERMITTED.
3. REFER TO MC-1499-H12 FOR CONTAINMENT VESSEL INSTRUMENT PENETRATION DETAIL.
4. EXPANSION COIL, ROOT VALVES AND PIPING TO BE INSTALLED PER ISA-A-11.

## FUNCTIONAL DESCRIPTION:

INVFT7400 MONITORS FLOW DOWNSTREAM OF THE EXCESS LETDOWN HX THRU INVFE7400 AND PROVIDES A SIGNAL TO INV 7400.

## Q A CONDITION 1 NUCLEAR SAFETY RELATED

(EXCEPT AS EXCLUDED ABOVE)

DUKE POWER COMPANY  
MCGUIRE NUCLEAR STATION UNIT NO. 1

INSTRUMENT DETAIL

EXCESS LETDOWN HX

OUTLET FLOW

NO.	REVISIONS	DRN	CHKD	DATE	APPR	DATE	CI-IL	ELC	PECA	INSPECTED	DWG. NO.	MC-1499-NV69	REV.
0	UPDATED TO REFLECT IMP												
	NSM-MG11584/00 1PM												
	DATE 9-22-86												

SI  
APERTURE  
CARD

SHT 3  
CL. 2 HYDRO

FOR INFORMATION  
ONLY



PDR RIDS

8905240063

