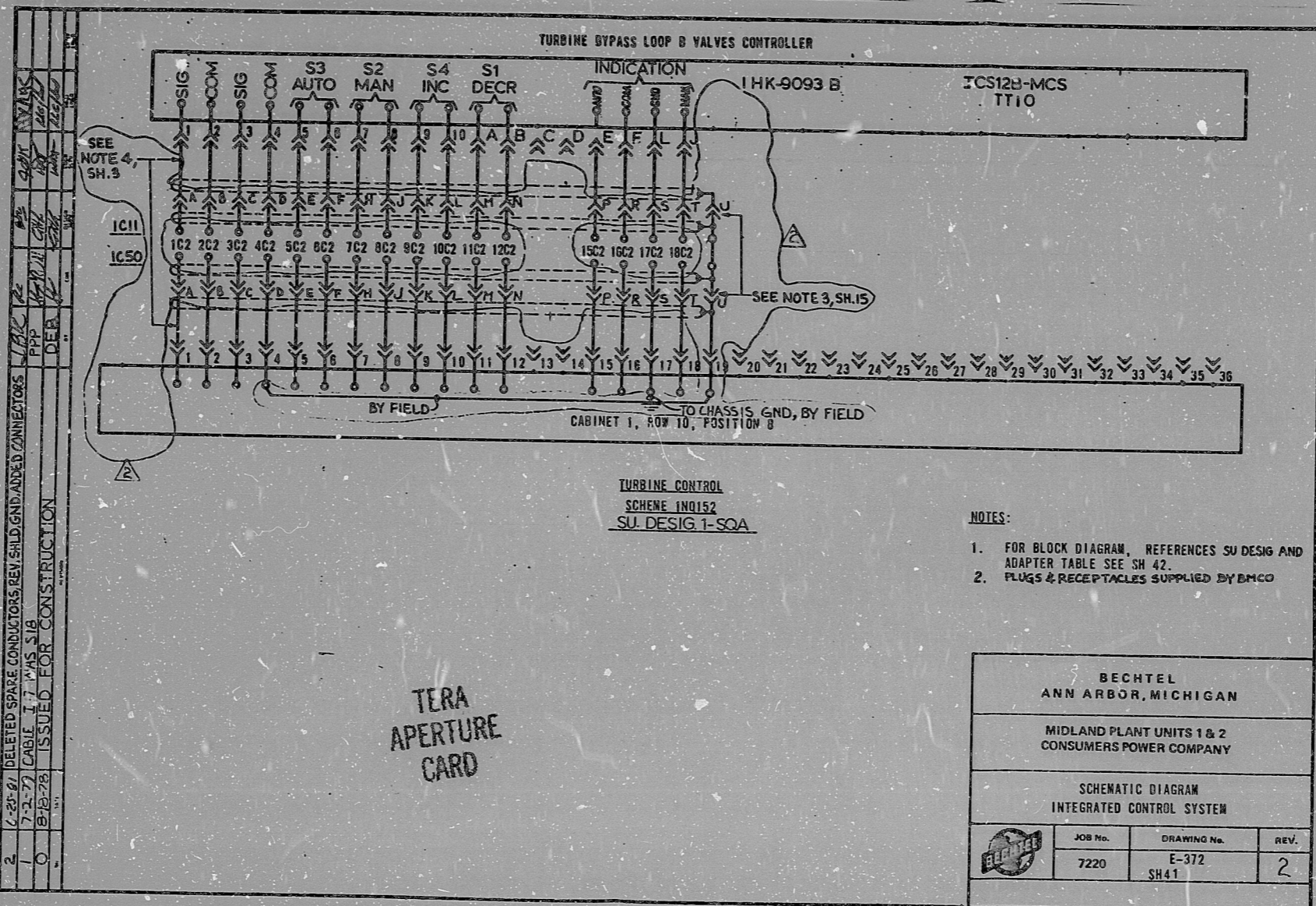


This drawing and the design it covers are the property of BECHTEL. They are hereby loaned and on the borrower's express agreement that they will not be reproduced, copied, loaned, exhibited, or used except in the limited way and purpose as permitted by any written consent given by the lender to the borrower.



REV.	DATE	BY	CHKD.	APP'D.
2	6-20-81	PP	PP	PP
1	7-2-77	PP	PP	PP
0	8-18-78	PP	PP	PP

DELETED SPARE CONDUCTORS REV. SH. 1.7 HAS S. 1.8
CABLE 1.7 HAS S. 1.8
ISSUED FOR CONSTRUCTION

- NOTES:
1. FOR BLOCK DIAGRAM, REFERENCES SU DESIG AND ADAPTER TABLE SEE SH 42.
 2. PLUGS & RECEPTACLES SUPPLIED BY BMCO

BECHTEL ANN ARBOR, MICHIGAN		
MIDLAND PLANT UNITS 1 & 2 CONSUMERS POWER COMPANY		
SCHEMATIC DIAGRAM INTEGRATED CONTROL SYSTEM		
JOB No.	DRAWING No.	REV.
7220	E-372 SH 41	2

TERA
APERTURE
CARD

"I certify that the image contained on this frame was made in the normal and regular course of business, on the date stated below and that it is an accurate reproduction of the document submitted to the contractor for filing, by Bechtel Power Corporation."

16X

10-28-81 DATE
R. Capelle CAMERA OPERATOR
CONTRACTOR'S SUPERVISOR OR MANAGER

RIDS

8112280/50

