

FINISH SCHEDULE

LOCATION	FLOOR	BASE	WALLS	CEILING	REMARKS
101
102
103
104
105
106
107
108
109
110
111
112
113
114
115
116
117
118
119
120
121
122
123
124
125
126
127
128
129
130
131
132
133
134
135
136
137
138
139
140
141
142
143
144
145
146
147
148
149
150
151
152
153
154
155
156
157
158
159
160
161
162
163
164
165
166
167
168
169
170
171
172
173
174
175
176
177
178
179
180
181
182
183
184
185
186
187
188
189
190
191
192
193
194
195
196
197
198
199
200

LEGEND

- 6" x 6" PLACEMENT (NON-COMMERCIAL) FIXTURE
- 6" x 6" PLACEMENT (COMMERCIAL) FIXTURE
- 6" x 6" PLACEMENT (NON-COMMERCIAL) FIXTURE
- SUBSTITUTION (NON-COMMERCIAL) FIXTURE
- CEILING SUPPORT
- WALL SUPPORT
- FLOOR REGISTER
- TRANSFER WALL
- GROUND REVEALER

NOTE:
 1-RECORD IN CONSULTOR AREA TO BE CALL-TO-WALL, OR RECORD FOR PANEL ACCESS, GROUT SHALL BE CUT AROUND PANEL-MOUNTED EQUIPMENT, BEING SETTING ON WALL, AS SHOWN.

CEILING DETAIL
 SCALE 1/8" = 1'-0"

DETAIL
 SCALE 1/4" = 1'-0"

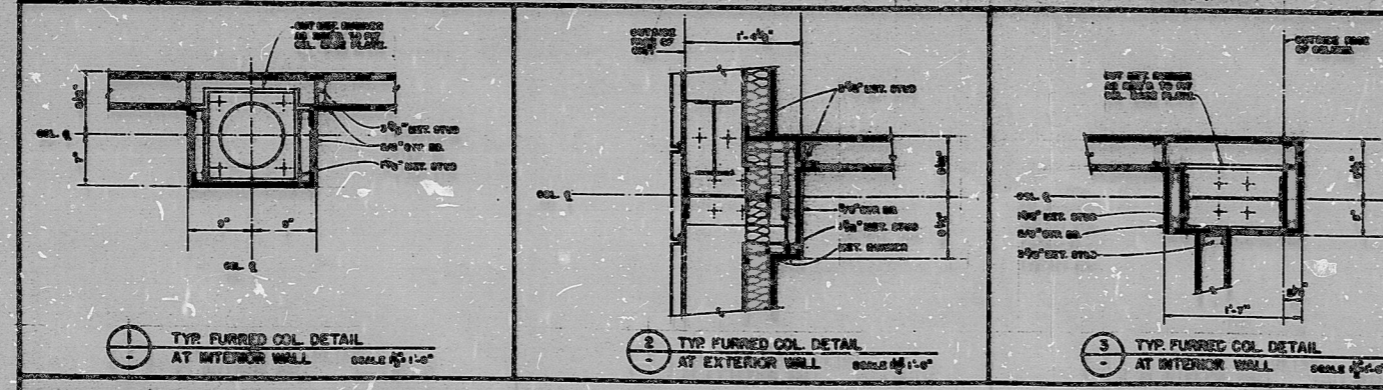
INFORMATION ONLY UNCONTROLLED COPY

FINAL ISSUE	DATE	BY	CHKD
ISSUED FOR CONSTRUCTION	DATE	BY	CHKD
ISSUED FOR OCCUPANCY	DATE	BY	CHKD
ISSUED FOR ARCHIVE	DATE	BY	CHKD

BICHTEL
 CONSULTING ENGINEERS
 2150 S. 10th St.
 Phoenix, AZ 85042
 TEL: 602-258-1100
 FAX: 602-258-1101
 WWW: www.bichtel.com

CEILING PLAN & FINISH SCHEDULE

TRANSFORM CENTER



SI
 APERTURE
 CARD

POOR ORIGINAL

8905100058

*8905040110

PDR RIDS

8905100058

